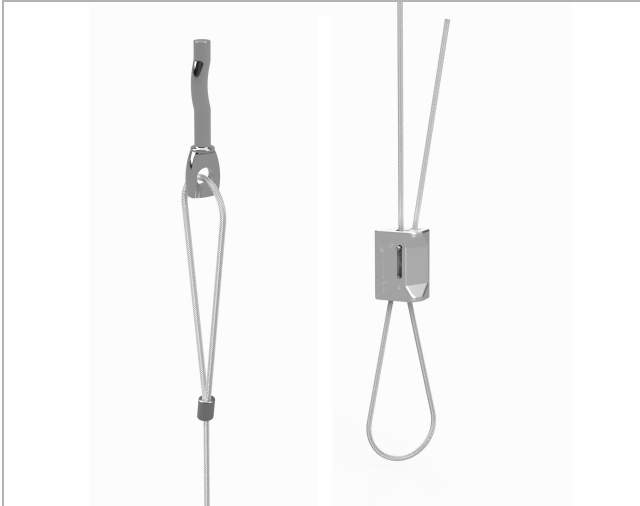




Tecwire Anchor

TWA



Description

The Tecwire Anchor system offers a cost effective method for installing a lightweight wire support into concrete or masonry.

The range consists of a pre-determined length of wire from 1 metre to 10 metres with a choice of Safe Working Load. The system consists of wire rope and Tecwire lock with a concrete anchor termination. Each support incorporates a one-piece concrete anchor which is vibration resistant and tamper proof.

Each fixing has an "S" shaped configuration which is pre-formed. Therefore no secondary tightening operation is required which greatly reduces the overall cost of an anchor installation

Features

- Key free release system for adjustment
- Vibration resistant fixing
- Pre-expanded anchor design allows for fast and easy installation for immediate, high strength loading
- High performance from high steel grade
- 30mm embedment depth
- Resistant to vandalism - not removable with screwdriver or wrench
- High tensile galvanised wire 1960N/mm² grade 7 x 7 construction wire rope
- BSEN 12385 wire standard
- Tecwire and Tecwire locks should not be used with alternative wire or lock systems

Ordering example

	TWA	2	3
Product			
Type mm			
Length m			

sales@lindab.co.uk

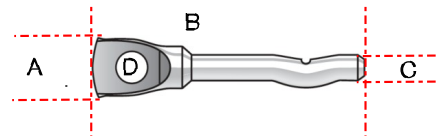
Applications

Suitable for concrete applications including:

- Solid brick
- Compressive resistant stone
- Reinforced concrete
- Slagged concrete C15/C35

Technical Data

Type mm	Length m	SWL kg	Pack qty
2	3	35	10



A	10.5 mm
B	47.5 mm
C	5.0 mm
D	5.8 mm

Installation

- Drill a 5.0 mm diameter hole into the base material to 32.0 mm depth.
- Clean any debris or dust from the hole
- Hammer the anchor into the hole until the head is firmly seated against the base material
- Once the concrete fixing is installed a Tecwire lock can be used to attach the wire to the service.
- The arrow on the Tecwire lock indicates the direction to feed wire through. Push the wire through this channel and draw through required length.
- Continue to draw wire through the Tecwire lock and pass the free end around or through the service to be supported.
- Feed the wire through the other channel in the direction indicated by the arrow.
- When desired height is achieved, trim wire to leave a 15cm tail.
- Always confirm engagement of the Tecwire lock on the wire by pushing the adjustment pin in the opposite direction to the arrow once the wire has been installed.

