



Tecflex 500 | TF500

SEMI FLEXIBLE CORRUGATED DUCTING



Tecflex 500 is a superb flexible duct constructed of one layer of corrugated aluminium. By the inter lockseam a high airtightness and flexibility is reached.

APPLICATION

- Suitable for mechanical air supply systems and air conditioning systems.
- Systems, where vapors should be exhausted
- Above mentioned systems, where a special mechanical strength is required

SPECIFICATIONS

Temperature range: -30°C to 250°C
 Operating pressure: Peak 400°C
 Operating air velocity: Bending radius: max. 30 m/s min. 1 x Ø
 Standard diameter range: 80 – 400 mm
 Standard length: 3 mtr

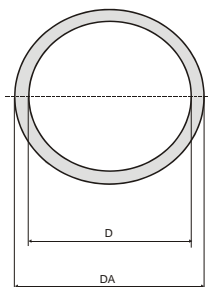
CONSTRUCTION

Total layers: 1

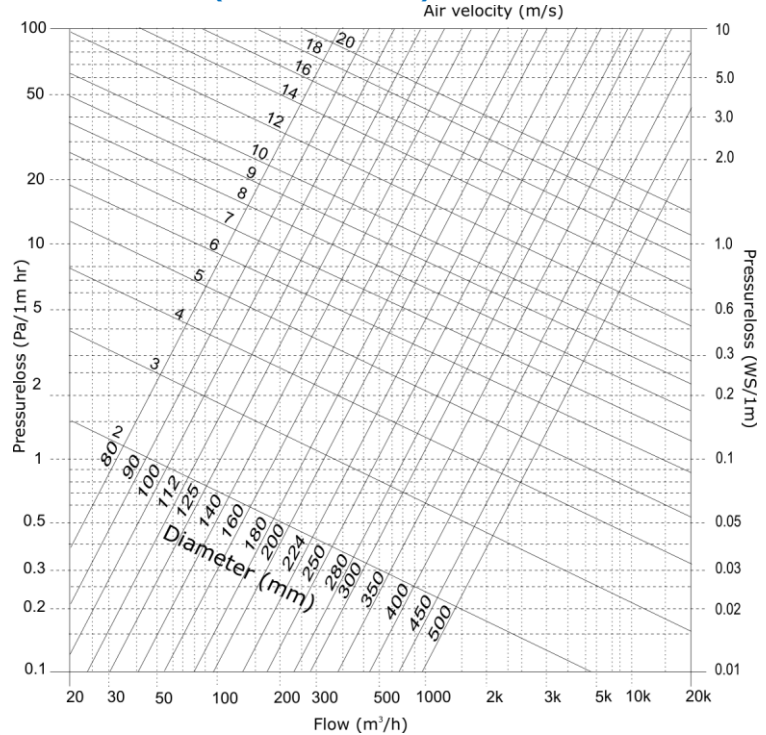
CLASSIFICATIONS

EU (EN 13501-1): A1
 UK (BS476): Part 4, 6, 7 and 20
 FR (NF): M0
 DE (DIN4102): A1

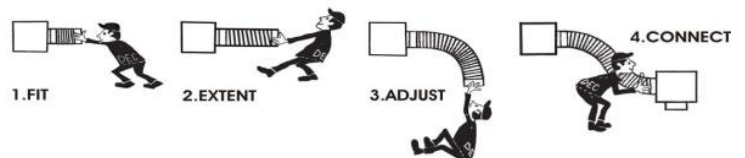
D(mm)	Tolerance	DA (mm)
080	+1,0 / -0	087
100	+1,0 / -0	107
125	+1,0 / -0	132
140	+1,0 / -0	147
150	+1,5 / -0	157
160	+1,5 / -0	167
180	+1,5 / -0	187
200	+1,5 / -0	207
224	+1,5 / -0	231
250	+2,0 / -0	257
280	+2,0 / -0	287
300	+2,0 / -0	307
315	+2,0 / -0	322
355	+2,0 / -0	402
400	+2,0 / -0	407



PRESSURE LOSS (STRAIGHT DUCT)



HOW TO INSTALL



Tecflex 500 fulfills all the requirements and are classified as specified within EN 13180: *Ventilation for buildings – Ductwork - Dimensions and mechanical requirements for flexible ducts.*