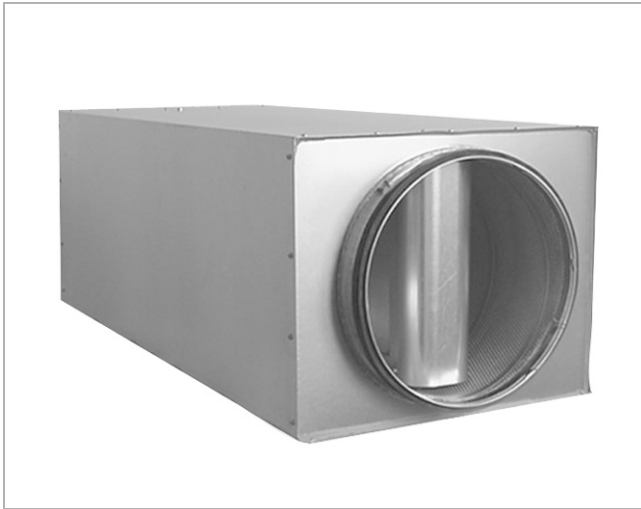
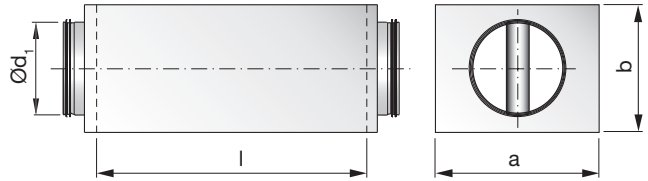


Circular straight low-built silencer with baffle

LRBCB



Dimensions and sound data



Ød ₁ [mm]	l [mm]	a x b		Insertion loss [dB] for centre frequency [Hz]								m [kg]
		[mm]	[mm]	63	125	250	500	1k	2k	4k	8k	
250	500	390	308	8	5	8	17	30	29	22	16	7,3
250	1000	390	308	10	7	12	28	46	53	38	24	14,2
315	500	453	372	5	5	7	15	28	19	14	14	10,6
315	1000	453	372	9	6	13	27	45	36	23	21	19,4
400	500	546	460	5	4	6	13	21	13	11	10	14,0
400	1000	546	460	6	5	10	22	39	25	17	15	24,3
500	600	700	600	5	4	9	17	17	12	10	9	24,1
500	1200	700	600	6	6	15	28	32	21	15	13	41,4
630	600	810	710	3	3	7	16	11	9	7	7	29,5
630	1200	810	710	5	5	13	26	24	15	11	10	50,4
800	600	980	880	2	2	6	12	9	7	5	5	38,4
800	1200	980	880	3	4	11	14	11	9	7	6	63,7

Description

Baffle silencer with low installation height.

Inner pipe of perforated sheet metal. A fibre cloth prevents tear off glass fibres.

Fulfills tightness class C.

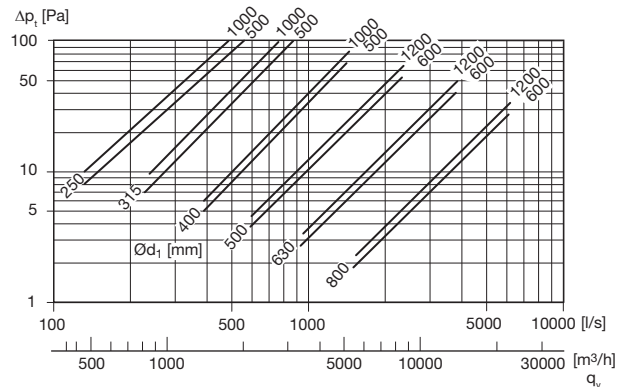
The baffle has an approved surface lining that can withstand cleaning with rotating nylon brush.

Tested according to ISO 7235 standard.

To select the appropriate silencer and optimize connection size and length for the best performance you can use our online tool lindQST or our free to download software DIMsilencer.

Special materials and sizes, please contact Lindab sales.

Technical data



Product	LRBCB	aaa	bbbb
LRBCB			
Connection dim. Ød₁			
Ød ₁ = 250 - 800 mm			
Length in mm			
l = 500 - 1200 mm			

Example: LRBCB - 500 - 1200

