

Grilles



Content – Grilles

Circular duct grille

RGS.....3



Rectangular duct grille

GRS.....5



1

2

3

4

5

6

7

8

9

10

11

12

13

14

15

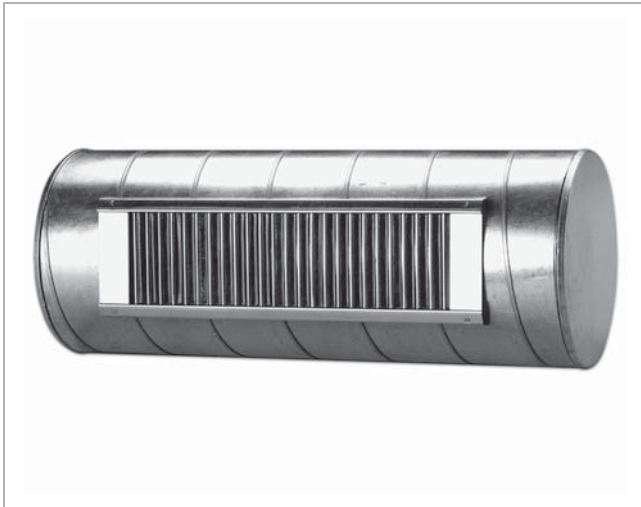
16

17

18

Circular duct grille

RGS



Description

RGS is a rectangular ventilation grille with vertical adjustable bars for direct installation in circular ducts.

The grille is used for exhaust air and can be supplied with straight sliding damper. The grille is designed so that the grille flanges always fit tight to the duct regardless of the duct diameter.

RGS is made of galvanised steel and is put together without welding. This means that the grille can be used without further surface treatment. The exterior of the grille thus matches the duct surface.

- Can be used for circular smoke control ducts
- Installed directly in circular duct

Maintenance

The grille should be removed to gain access to the duct.

Technical data

See RGS under the topic airborne solutions.

Materials and finish

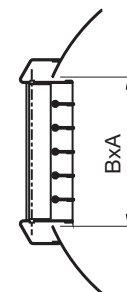
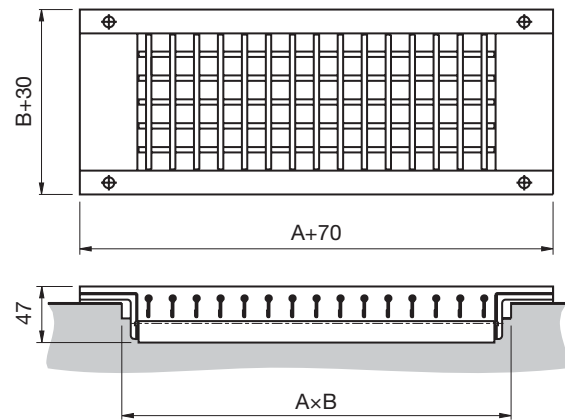
Grille: Hot-galvanised steel
 Sliding damper: Electro-galvanised steel

Ordering example

Product	RGS	a	bbb	ccc
Type				
Accessories				
A - measure				
B - measure				

A x B = Cutting dimension

Dimensions



A x B = Cutting dimension

Screws included.

1
2
3
4
5
6
7
8
9
10
11
12
13
14
15
16
17
18

Circular duct grille

RGS

Dimensions

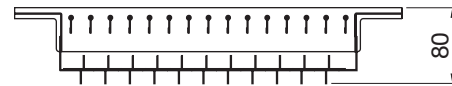
Measure			Min duct measure mm	Free area F(m ²)	RGS-0 Weight kg
A	x	B			
325	x	75	160	0.017	1.10
325	x	125	250	0.028	1.30
325	x	150	315	0.034	1.40
325	x	225	500	0.056	2.20
425	x	75	160	0.023	1.40
425	x	125	250	0.037	1.80
425	x	150	315	0.045	1.90
425	x	225	500	0.074	3.00
525	x	75	160	0.028	1.70
525	x	125	250	0.047	2.00
525	x	150	315	0.056	2.30
525	x	225	500	0.093	3.40
625	x	75	160	0.034	1.90
625	x	125	250	0.056	2.40
625	x	150	315	0.068	2.60
625	x	225	500	0.112	3.70
825	x	75	160	0.045	2.40
825	x	125	250	0.074	3.10
825	x	150	315	0.093	3.50
825	x	225	500	0.148	5.10
1025	x	75	200	0.056	2.90
1025	x	125	250	0.093	3.40
1025	x	150	315	0.112	3.90
1025	x	225	500	0.186	5.80
1225	x	75	500	0.068	3.20
1225	x	125	250	0.112	4,00
1225	x	150	200	0.136	4.40
1225	x	225	500	0.224	6.30

Accessories

RGS-0, without accessories.

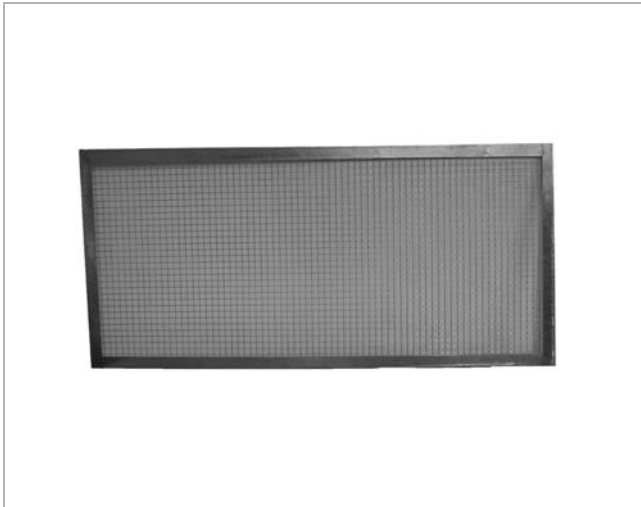


RGS-4, With straight sliding damper.

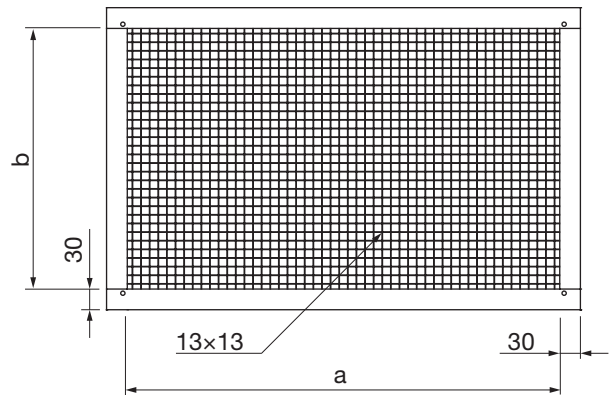


Rectangular duct grille

GRS



Dimensions



Description

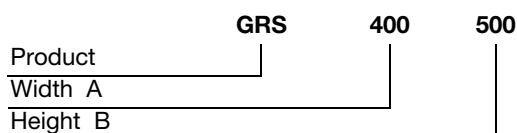
Grill for rectangular smoke control ducts.

Material:

Material: Galvanized steel

A mm	B mm	Free area m ²	m kg
200	150	0,012	0,11
200	200	0,018	0,13
200	300	0,032	0,17
200	400	0,045	0,22
200	500	0,058	0,27
200	600	0,071	0,32
200	700	0,084	0,38
200	800	0,097	0,45
200	900	0,111	0,52
300	150	0,020	0,15
300	300	0,054	0,22
300	400	0,077	0,27
300	500	0,099	0,32
300	600	0,120	0,38
300	700	0,140	0,45
300	800	0,170	0,52
300	900	0,190	0,60
400	150	0,030	0,19
400	400	0,110	0,32
400	500	0,140	0,38
400	600	0,170	0,45
400	700	0,200	0,52
400	800	0,240	0,60
400	900	0,270	0,68
500	150	0,040	0,24
500	500	0,180	0,45
500	600	0,220	0,52
500	700	0,260	0,60
500	800	0,310	0,68
500	900	0,350	0,76
600	150	0,050	0,30
600	600	0,270	0,60
600	700	0,320	0,68

Ordering example



Rectangular duct grille

GRS

A mm	B mm	Free area m ²	m kg
600	800	0,380	0,76
600	900	0,430	0,85
700	150	0,050	0,35
700	700	0,390	0,76
700	800	0,450	0,85
700	900	0,510	0,94
800	150	0,060	0,42
800	800	0,510	0,94
800	900	0,580	1,04
900	150	0,070	0,48
900	900	0,660	1,15
1000	600	0,480	0,94
1000	800	0,650	1,15

1

2

3

4

5

6

7

8

9

10

11

12

13

14

15

16

17

18