

Channel

RPC



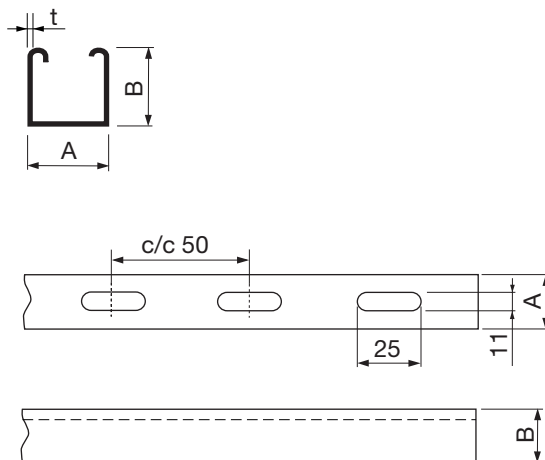
Description

RPC is a strong steel rail in hot-dip galvanized sheet (Z 275). Supplied in lengths of 3 and 6 metres.

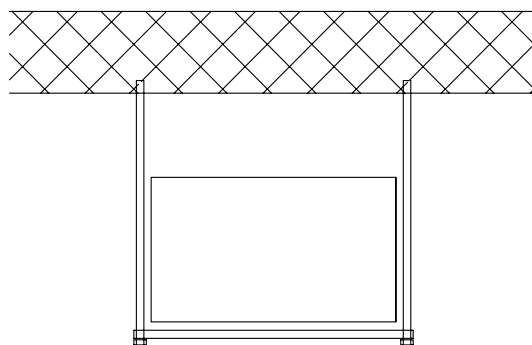
Suitable in connection with suspension, e.g. for supporting rectangular ducts.

RPC is provided with elongated holes in the bottom and the walls of the rail are reinforced with bent edges.

Dimensions



Dim		Length [mm]	Type	t [mm]
A	B			
41	21	3000	SLOT	1,6
41	21	3000	SLOT	2,5
41	21	6000	SLOT	1,6
41	21	6000	SLOT	2,5
41	41	3000	SLOT	1,6
41	41	3000	SLOT	2,5
41	41	6000	SLOT	1,6
41	41	6000	SLOT	2,5



Ordering example

