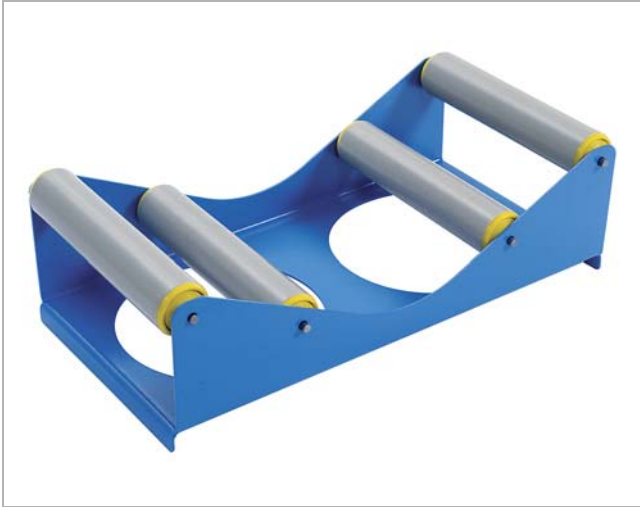


SR roller

SRR



Description

SRR is a cradle for cutting of ducts with Ø 315–1250 mm. The duct is placed on two or three cradles for simple, fast and ergonomically correct rotating at marking of cut length and at cutting.

The cradle substantially reduces the need of free floor space, and makes it easier to arrange a proper working place e.g. with simpler cord handling.

Made with lightening holes for smaller weight and easier carrying.

The rollers are available as spare part and can easily be exchanged.

Weight: 5,0 kg

Ordering example

Product **SRR**

Advantages

The duct coming up a little from the floor surface leads to the following advantages:

- faster to cut the ducts,
- easier to insert fittings in the duct,
- easier to slip on flat bar flanges.

The duct being easy to rotate also leads to the following advantages:

- full access all around and better working position to screw/rivet a fitting,
- easier to cut hole for and to screw/rivet e.g. a saddle piece.

Painted ducts run much smaller risk of being scratched.

Easily damaged floors run much smaller risk of being damaged.

Material

Manufactured of sturdy, painted steel sheet metal to be robust.

Spare part for SR Roller

SRRROLL 250

Roller



Ordering example

Product **SRRROLL 250**