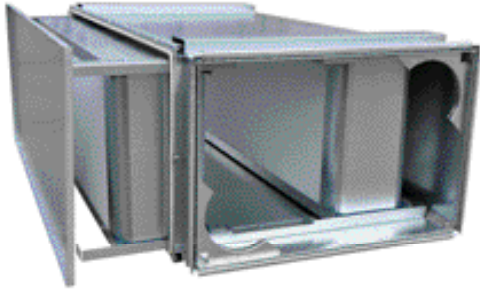


# Openable duct attenuator with DACKA-A removable splitters



## Description

DACKA-A is an openable duct attenuator in galvanized Steel\* with splitters filled with Acutec® attenuation material. Splitters are removable for cleaning or replacement.

Acutec® is a hygienic and washable polyester absorption material with high airflow and shock resistant non-woven fleece finishing and no loose fibres.

Larger attenuators are reinforced by an outer modular frame.

Attenuator is equipped with joining profile LS1, RJFPC3 20, RJFPC3 30 or RJFPC3 40.

Additional thermal insulation 50 mm (LE50) or more and fire insulation on request.

To size the appropriate attenuator you can use our IT-online tool LindQST, where splitter distance, length and height can be optimized for the best performance.

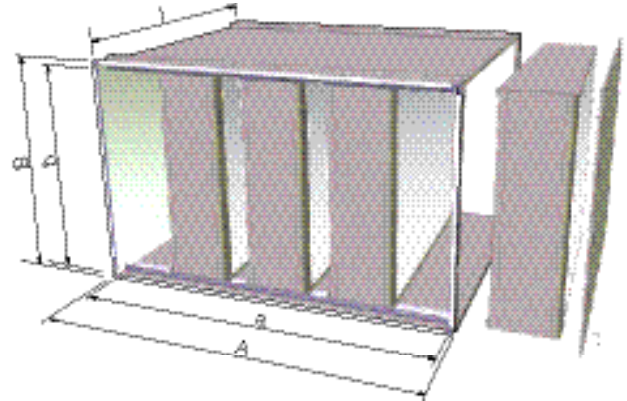
Tested according to ISO 7235 standard.

Special material and sizes, please contact to Lindab sales.

DACKA attenuator comes in two models. Non-openable DACKA and openable, fully cleanable DACKA-A. The casing length of DACKA-A is 150 mm longer than DACKA with the same splitter length.

## Dimensions

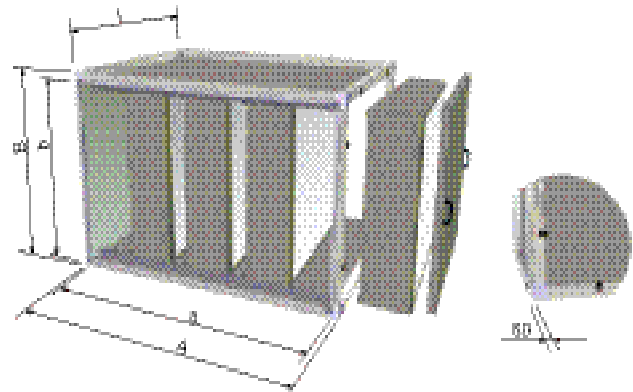
**DACKA-A dimensions without reinforcement frame and without thermal insulation (LE50).**



- a = Width
- A = a + 40 - 80 mm\*
- b = Height
- B = b + 40 - 80 mm\*
- l = Length

\* Depending on the joining profile.

**DACKA-A attenuator dimensions with reinforcement frame.**



- a = Width
- A = a + 100 mm
- b = Height
- B = b + 100 mm
- l = Length

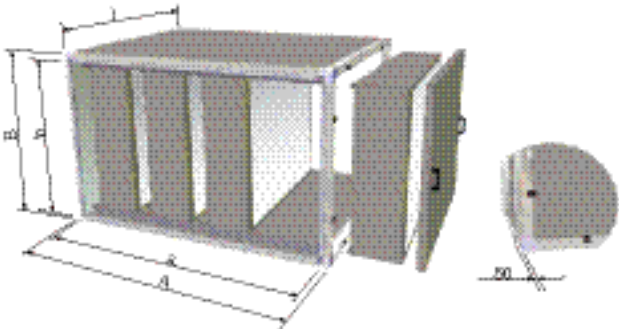
- If overall dimension a + b + l > 5m, the attenuator is reinforced by an outer aluminium modular frame profile.
- Special reinforcement frames available in smaller sizes on request.

# Openable duct attenuator with removable splitters

## DACKA-A

### Dimensions

**DACKA-A attenuator dimensions with 50 mm thermal insulation (LE50).**



- a = Width
- A = a + 100 mm
- b = Height
- B = b + 100 mm

### Order code

Product	DACKA-A	P	a	b	l	c	d	e	f
<b>Type</b> DACKA-A openable attenuator with removable splitters Splitters with Acutec® polyester									
<b>Product code (P)</b> Calculate by LindQST									
<b>Nominal dimensions (a)</b> Width (a) in mm Min. - Max. 400 - 3000 mm									
<b>Height (b) in mm</b> Min. - Max. 300 - 3000 mm									
<b>Length (l) in mm</b> The total length of the attenuator is 150 mm more than the length of the splitters Min. - Max. 500 - 3000 mm									
<b>Connection type (c)</b> 1 = LS1 2 = RJFPC3 20 3 = RJFPC3 30 4 = RJFPC3 40									
<b>Insulation (d)</b> 0 = Without thermal insulation LE50 = 50 mm thermal insulation									
<b>Frame (e)</b> 0 = Without reinforcement frame R = With reinforcement frame									
<b>Direction of inspection door (f)</b> V = Left O = Right The direction of inspection door shows the direction of airflow when looking at the service side of the AHU									

Example: DACKA-A - 5005 - 900 x 600 - 1350 - 1 - 0 - 0 - 0 - V