

Lindab

AD, AR, AE, AC
(MFA / MFAN, DGA / DGAN)

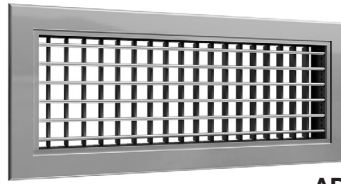
Aluminium grilles - Installation instruction
Aluminiums riste - Installations vejledning
Aluminiumgaller - Montageinstruktion
Alumiinisäleikot - Asennusohje
Aluminium Lüftungsgitter - Montage Anweisung
Griglie in alluminio - Istruzioni di montaggio
Grilles en aluminium - Instructions de montage



Installation instruction

AD, AR, AE, AC

Overview
Oversigt
Översikt
Yleiskatsaus
Übersicht
Panoramica
Aperçu



AD



AR

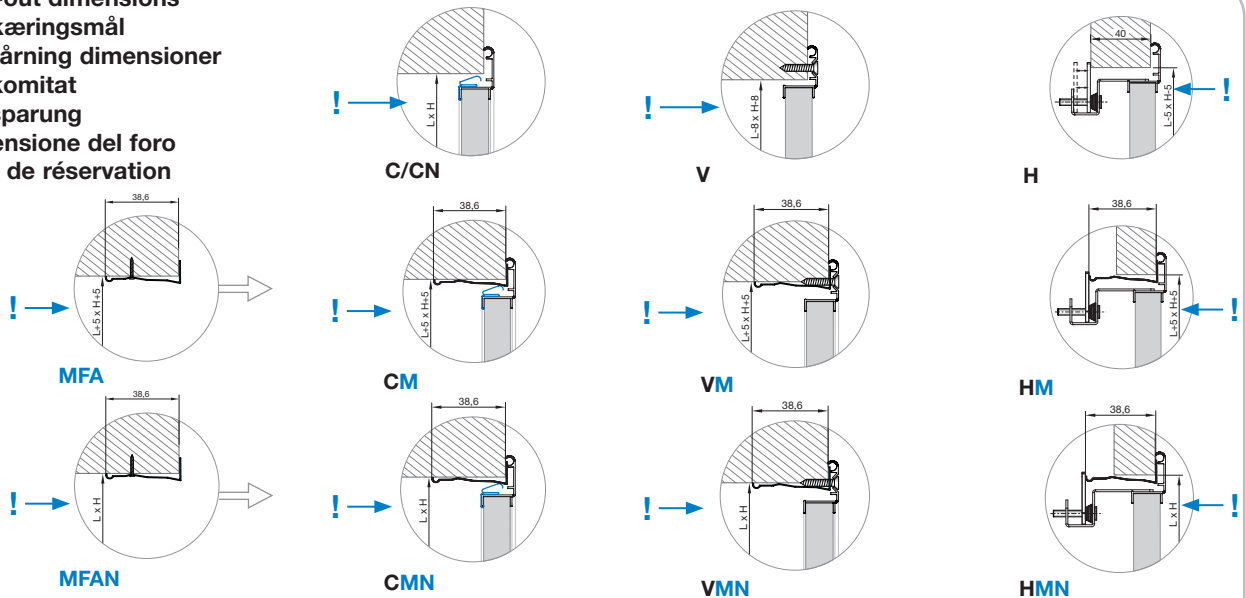


AE



AC

Cutt-out dimensions
Udskæringsmål
Ursparning dimensioner
Aukkomitat
Aussparung
Dimensione del foro
Cote de réservation



	AD				AR	AE		AC			
	11	12	21	22	11	11	12	11	12	13	14
C/CN											
V											
H	•	•	•	•	-	•	-	•	•	•	•
CM											
VM											
HM	•	•	•	•	-	•	-	•	•	•	•
CMN											
VMN											
HMN	•	•	•	•	-	•	-	•	•	•	•

- Ceilings / Loftet / Tak / Katot / Decken / Soffitti / Plafonds.
- Walls / Vægge / Väggar / Seinät / Wände / Pareti / Les Murs.
- Not possible / Ikke mulig / Inte tillgänglig / Ei mahdollinen / Nicht möglich / Non possibile / Pas possible.

Symbols
Symboler
Symboler
Symbolit
Symbole
Simboli
Symboles



Open damper
 Åbent spjæld
 Öppet spjäll
 Säätöpelti auki
 Geöffnete Drossel
 Serranda aperta
 Registre ouvert

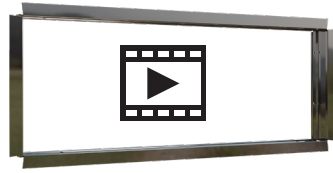


Closed damper
 Lukket spjæld
 Stängt spjäll
 Suljettu säätöpelti
 Geschlossene Drossel
 Serranda chiusa
 Registre fermé

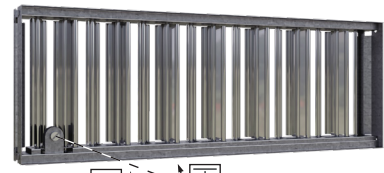
Installation instruction

AD, AR, AE, AC (MFA/MFAN, DGA/DGAN)

Accessories
Tilbehør
Tillbehör
Lisävarusteet
Zubehör
Accessori
Accessoires

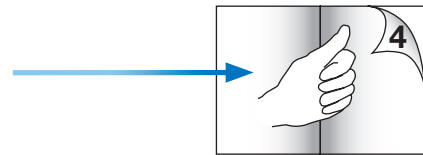


MFA/MFAN

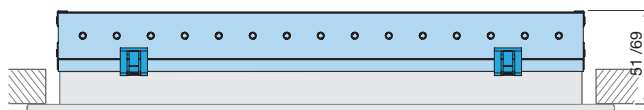
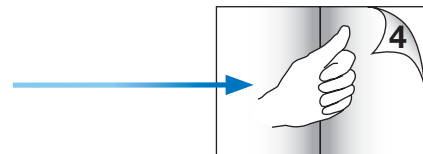
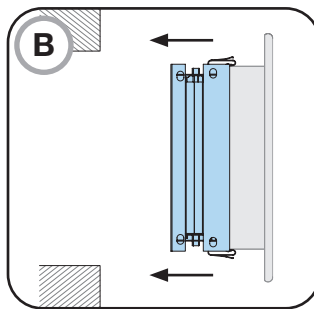
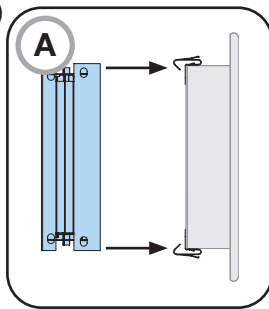


DGA/DGAN

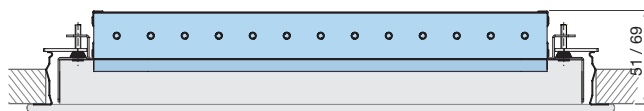
MFA/MFAN (M)



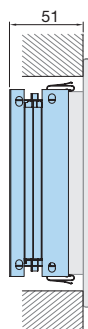
DGA/DGAN (D/DN)



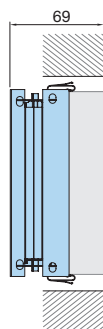
C/CN, V, CM, VM, CMN, VMN (AD, AR, AE, AC)



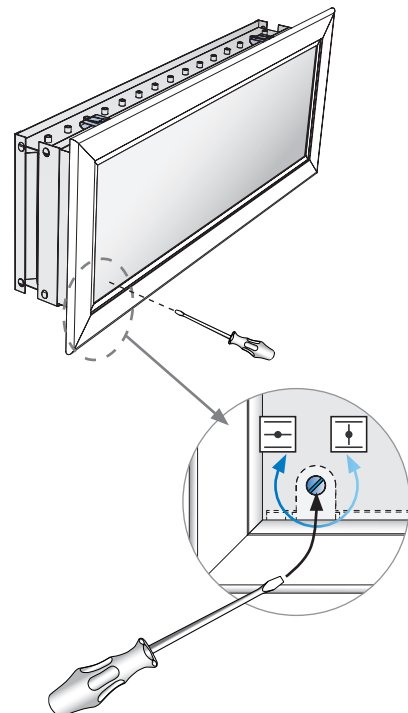
H, HM, HMN (AD, AE-11, AC)



AD-11, 12
AR-11
AE-11, 12
AC -11, 12, 13, 14

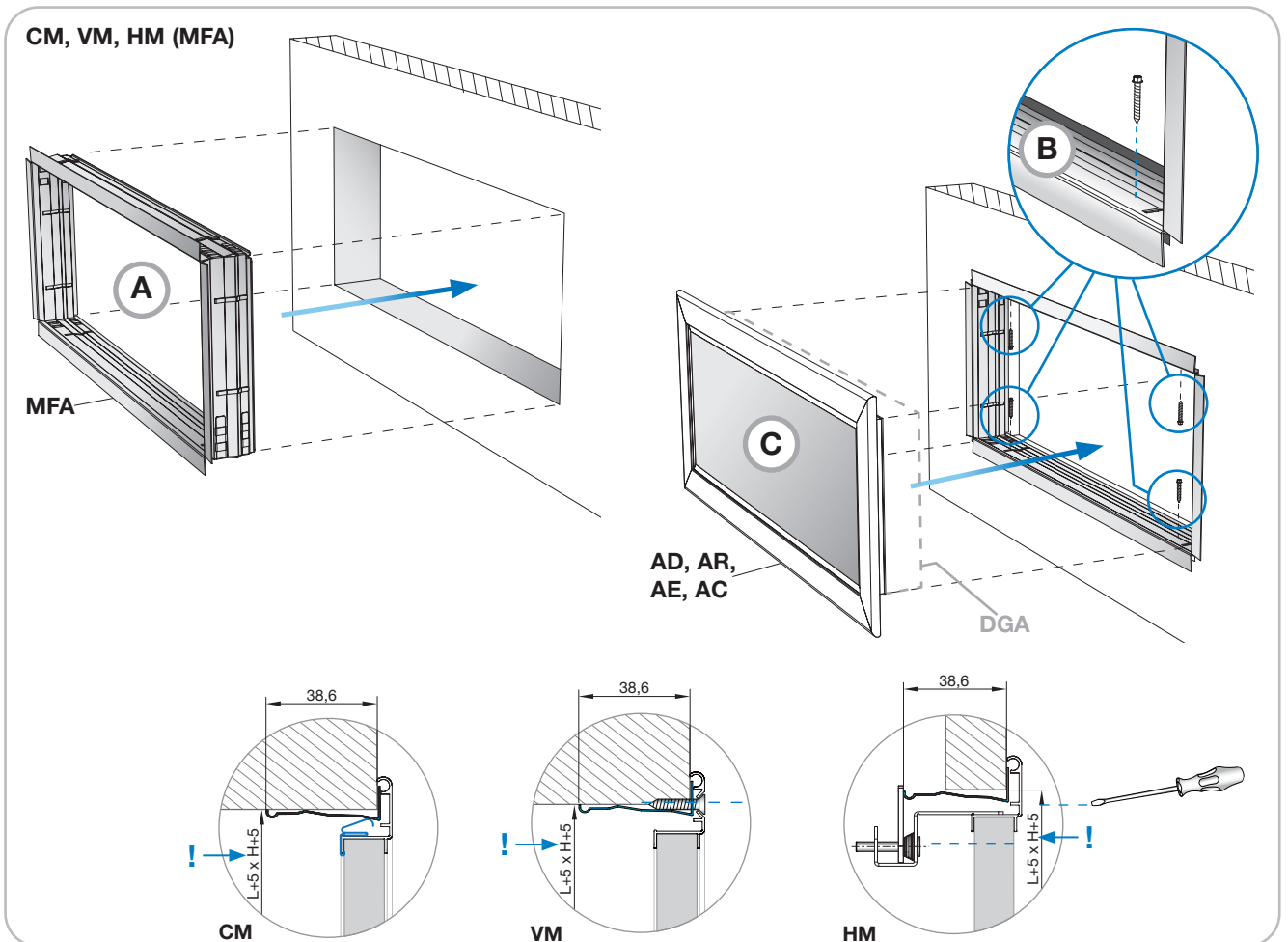
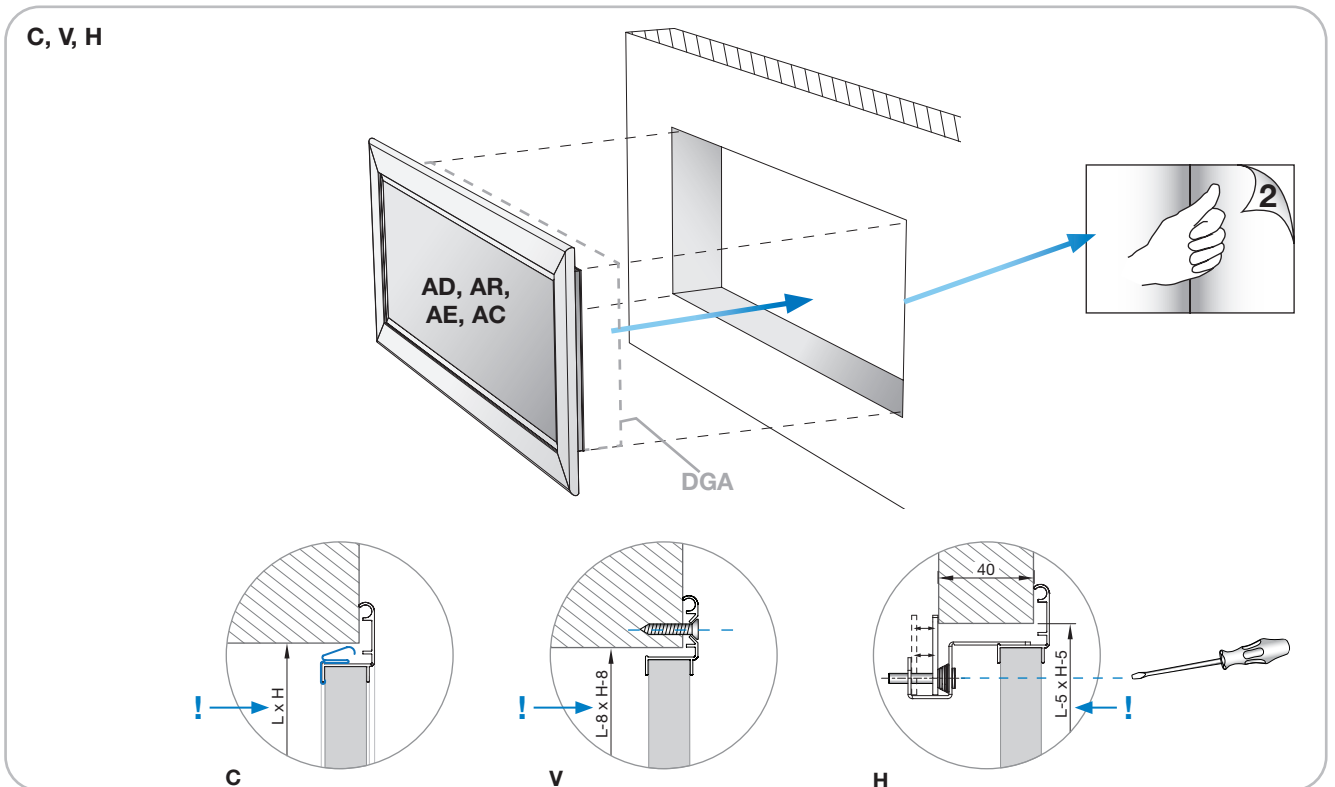


AD-21, 22



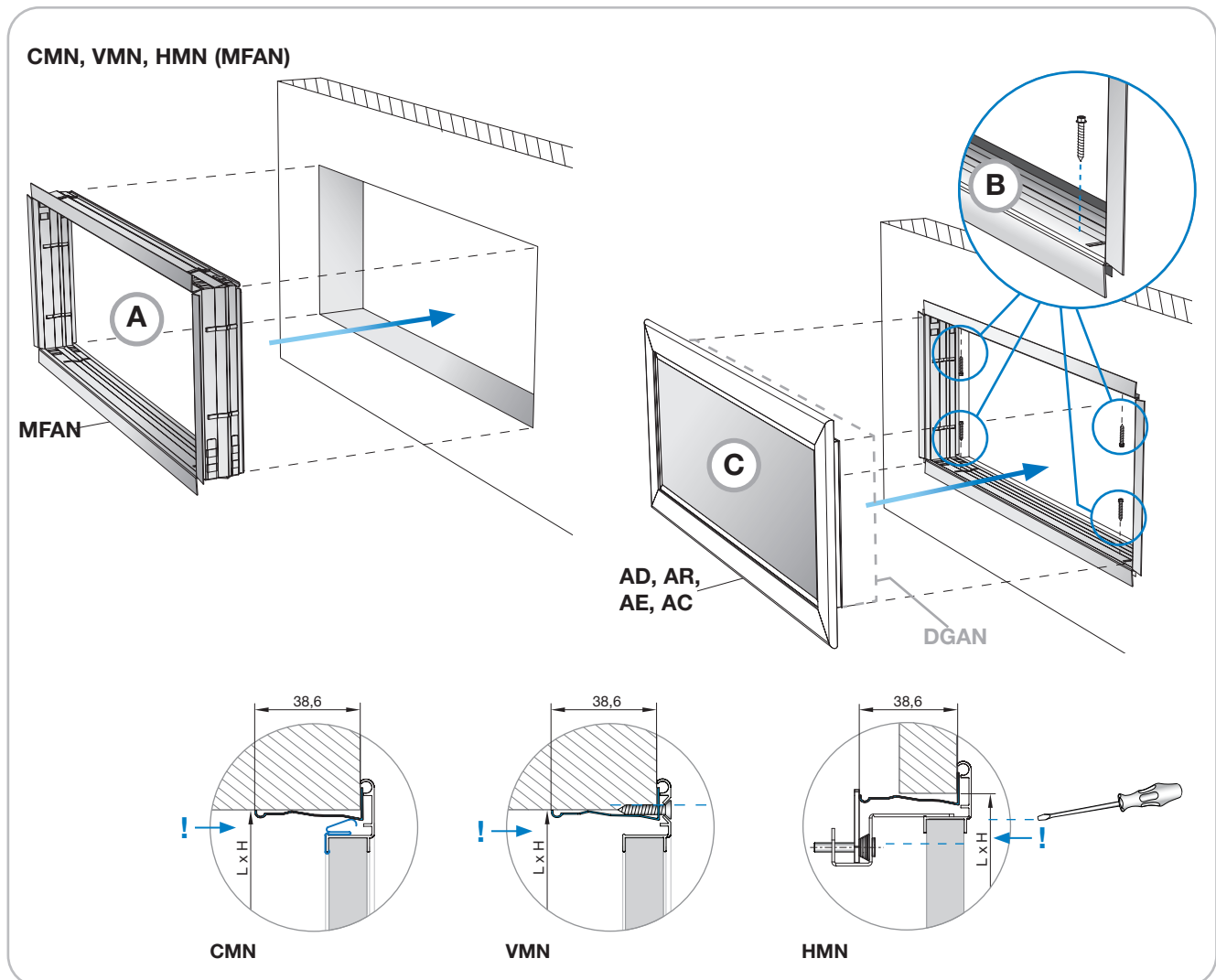
Installation instruction

AD, AR, AE, AC



Installation instruction

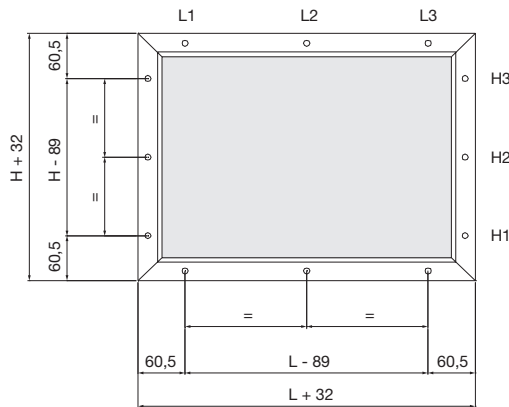
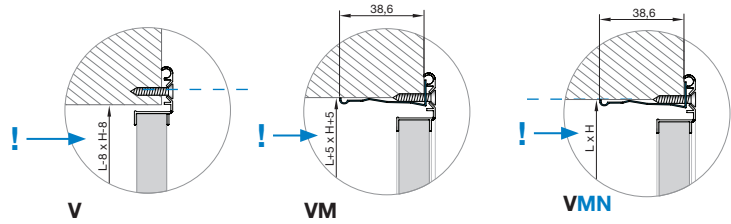
AD, AR, AE, AC



Installation instruction

AD, AR, AE, AC

Number of Visible screw holes
 Antal synlige skruehuller
 Antal synliga skruvhål
 Number of Visible screw holes -FIN
 Anzahl sichtbare Schraubenlöcher
 Numero di fori visibili
 Nombre de trous pour vis visibles



AD, AR, AE, AC (L x H)

Nominal dimensions / Nominelle dimensioner / Nominella dimensioner / Nimelliskoko /
 Nominelle Dimensionen / Dimensioni nominali / Dimensions nominales

L ≤ 400 mm

L mm	L1	L2	L3	H mm		
				H1	H2	H3
100 - 400 *				75 - 300 **		•
				400 - 700	•	•
				800 - 1400 ***	•	•

* AC: Min. L = 200 mm

** AC-11 / AC-13 : Min. H = 100 mm
 AC-12 / AC-14 : Min. H = 150 mm

*** AR, AE, AC : Max. H = 1200 mm

L > 400 mm

L mm	L1	L2	L3	H mm		
				H1	H2	H3
500 - 700	•		•			
800 - 1500 *	•	•	•	75 - 500 **		
				600 - 900	•	
				1000 - 1500 ***	•	•

* AR, AE, AC: Max. L = 1200 mm
 AD : Max. L = 1500 mm

** AC-11 / AC-13 : Min. H = 100 mm
 AC-12 / AC-14 : Min. H = 150 mm

*** AR, AE, AC : Max. H = 1200 mm

Installation instruction

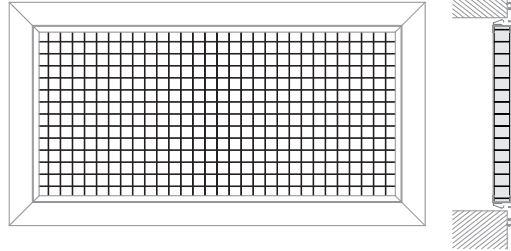
AD, AR, AE, AC

Fixed blades
Faste lameller
Fasta lameller
Kiinteät säleet
Feststehenden Lamellen
Alette fisse
Lamelles fixes

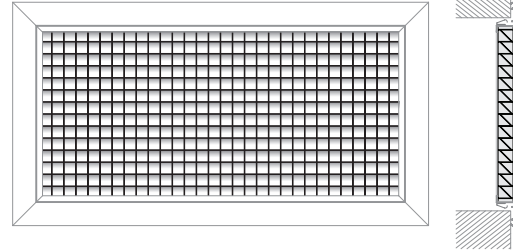
AR-11



AE-11



AE-12

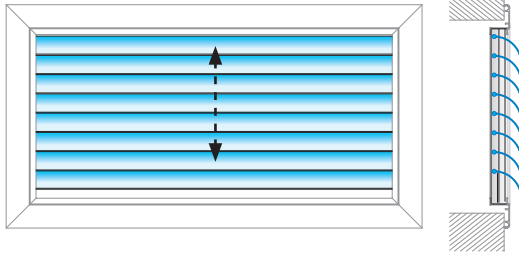


Installation instruction

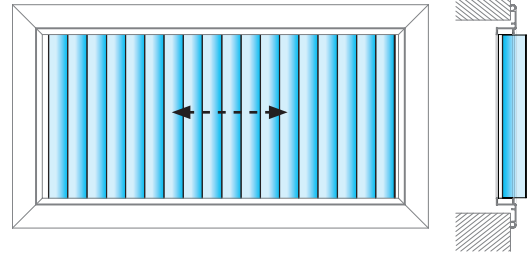
AD, AR, AE, AC

Adjustable blades
 Justerbare lameller
 Ställbara lameller
 Säädettävät säleät
 Einstellbaren Lamellen
 Alette regolabili
 Ailettes réglables

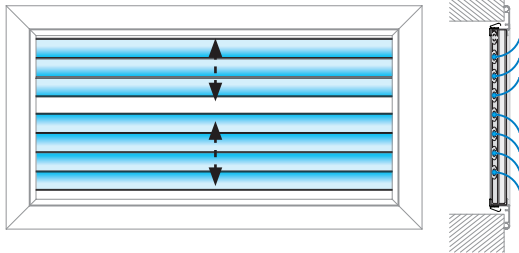
AC-11



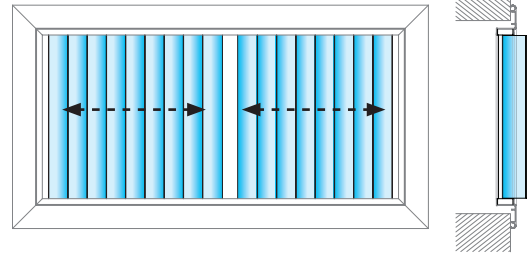
AC-12



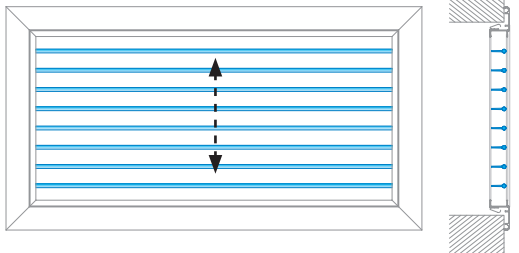
AC-13



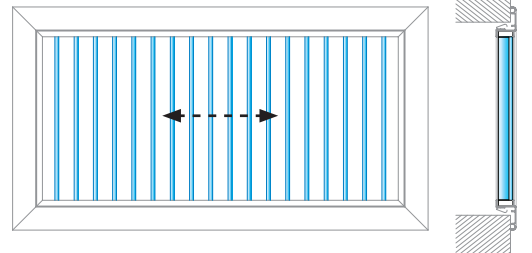
AC-14



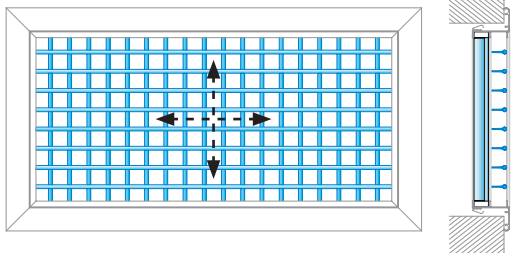
AD-11



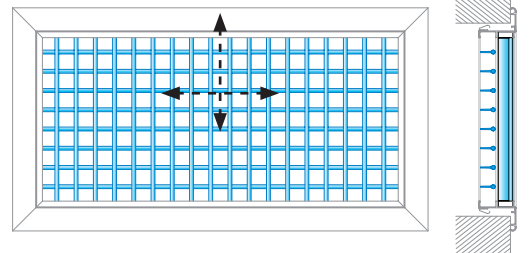
AD-12



AD-21



AD-22





Most of us spend the majority of our time indoors. Indoor climate is crucial to how we feel, how productive we are and if we stay healthy.

We at Lindab have therefore made it our most important objective to contribute to an indoor climate that improves people's lives. We do this by developing energy-efficient ventilation solutions and durable building products. We also aim to contribute to a better climate for our planet by working in a way that is sustainable for both people and the environment.

[Lindab](#) | For a better climate