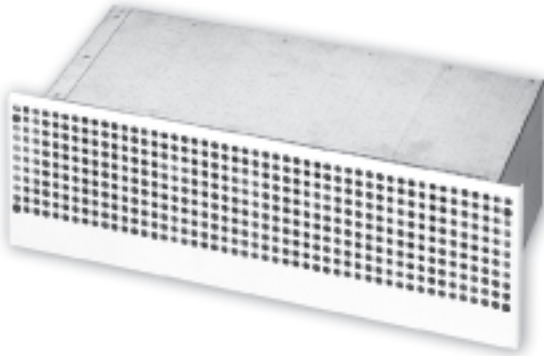


# Theatre diffuser

CRP



## Description

CRP is a rectangular displacement diffuser for installation under seats in theatres, auditoriums, etc. It is suitable for installation in a pressure chamber and has a fixed resistance that ensures even distribution of the air. The diffuser can be adapted to the correct air volume and pressure, specified according to the actual conditions.

- It has built-in resistance that ensures even distribution over the diffusers.
- The diffuser can be supplied with a specified pressure setting.
- The diffuser is available in other dimensions.

## Maintenance

The front plate of the diffuser can be removed to enable cleaning of the internal components. The visible parts of the diffuser can be wiped with a damp cloth.

## Materials and finish

Diffuser:	Galvanised steel
Front plate:	1 mm galvanised steel
Standard finish:	Powder-coated
Standard colour:	RAL 9010 or 9003, gloss 30

The diffuser is available in other colours. Please contact Lindab's sales department for further information.

## Order code

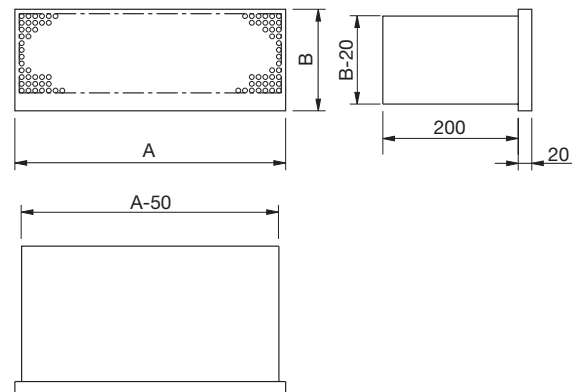
Product **CRP** aaa

Type

Size: 4010, 4015, 5010, 5015

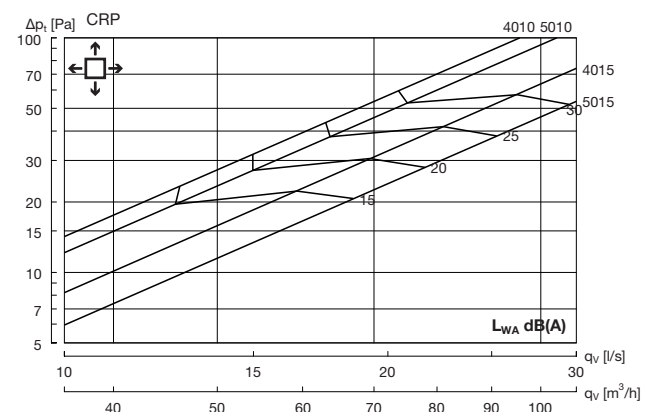
Example: CRP-4015

## Dimension



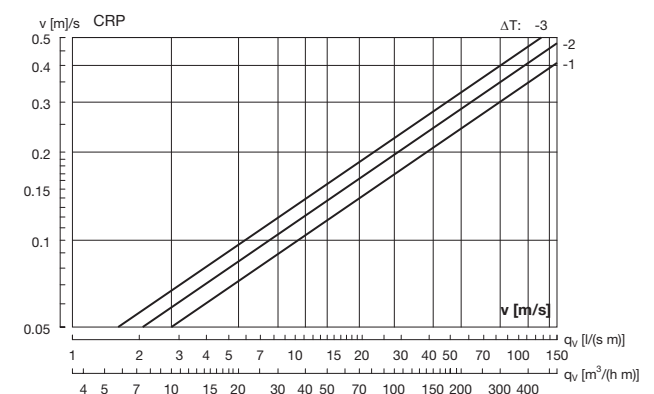
Size	A [mm]	B [mm]	Weight [kg]
4010	400	100	1.60
4015	400	150	2.20
5010	500	100	2.00
5015	500	150	2.70

## Pressure, sound level



Size	Centre frequency Hz							
	63	125	250	500	1K	2K	4K	8K
4010	5	-6	-5	-2	-4	-9	-17	-26
4015	0	-4	-1	0	-6	-10	-18	-27
5010	7	-4	-3	0	-6	-12	-18	-29
5015	5	-3	-1	0	-6	-11	-19	-30

## Near zone



The speed is measured 0.5 m from the diffuser.