

Manifold

MHFU



Description

The manifold can be used for both supply and exhaust air. It is available in several types and dimensions.

The manifolds are designed for floor installation but can be used at other locations as well.

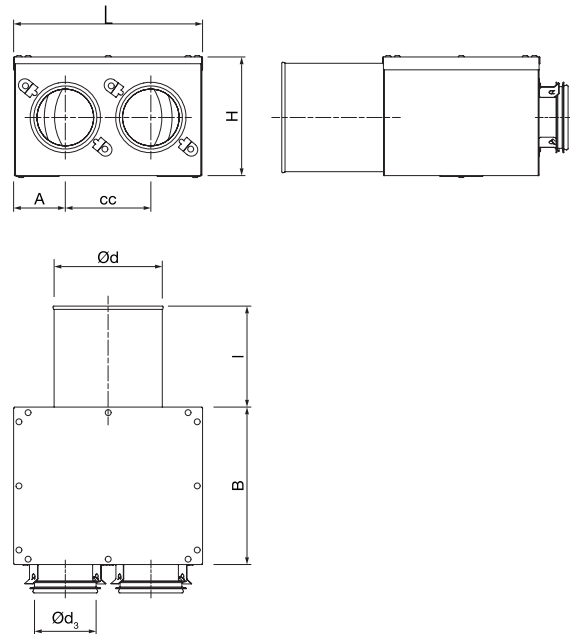
All types have couplings with Lindab safe sealings for connections of SR spiral-seamed ducts or semiflexible ducts LFPE. Boxes with Ø 76 couplings with Lindab safe sealings are intended for direct connection of the semiflexible duct LFPE. It is not intended for SR spiral-seamed duct.

The Smart Lock function allows you to fasten LFPE effortlessly to the Safe couplings.

Two turnable anchor plates, placed on the bottom of the manifold, can be used for fixation.

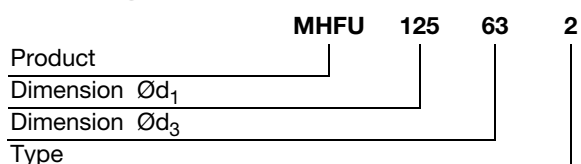
Fulfils the requirements for air tightness class D.

Dimensions



Ød nom	Ød ₃ nom	Type	L mm	B mm	H mm	I mm	cc mm	A mm	m kg
125	63	2	221	184	138	120	100	61	1,20
125	76	2	221	184	138	120	100	61	1,20

Ordering example

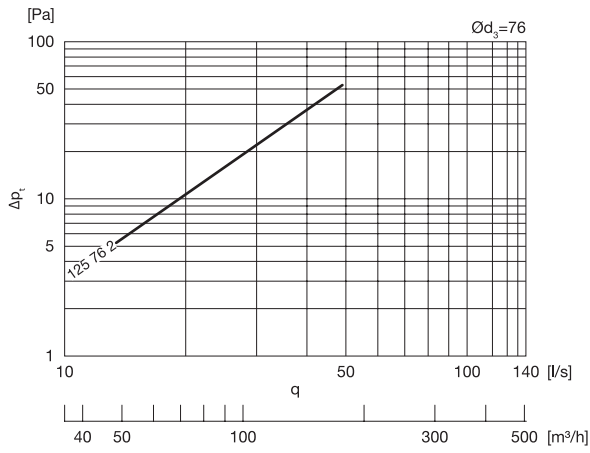
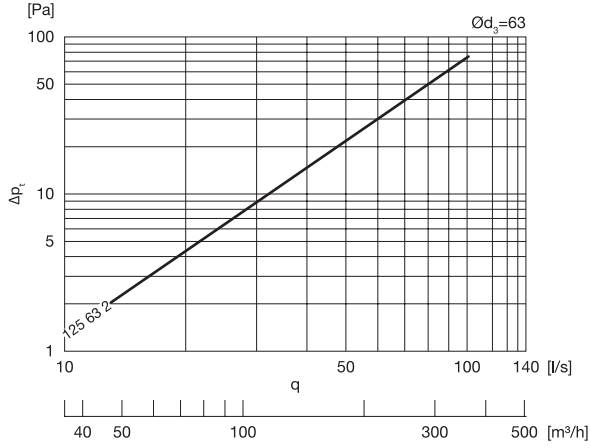


Manifold

MHFU

Technical data

Supply



Extract

