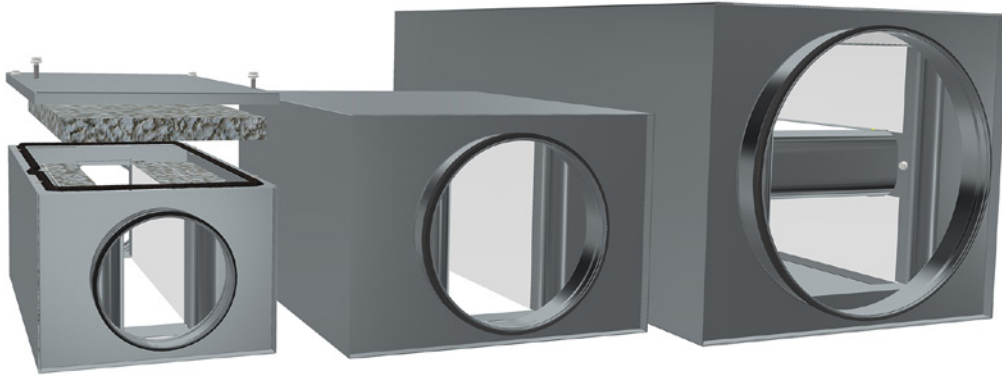


Circular straight low-built silencer KVAPL



Description

KVAPL is a rectangular attenuator with circular connections and a low installation height.

Attenuation material is mineral wool covered with textile to prevent fibres of coming out. The KVAPL's are made from galvanized steel sheet.

The attenuator can be cleaned by rotating nylon brushes, vacuum cleaner or damp cloth. With the openable models there are possibilities to replace the acoustic infill.

Fulfils tightness class C.

Tested according to ISO 7235 standard.

For special requirements such as material, perforated sheet on top of the attenuation material, sizes and flanges - this can be made on request. Please contact Lindab sales.

Model description

The KVAPL comes in two different designs.

- 3.= Attenuator with mineral wool attenuation material.
- 4.= Openable Attenuator with mineral wool attenuation material.

Model overview

Model	Mineral wool	Openable	Replaceable acoustic infill
3	x		
4	x	x	x

Technical data

To select the appropriate attenuator and optimize connection size and length to achieve the best performance please use our online tool **LindQST**.

[KVAPL on LindQST >>](#)

Order code

Product	KVAPL	200	1000	3
KVAPL				
Connection (d), in mm ($\varnothing d_{1 \text{ nom}}$)				
100 - 800				
Length (l), in mm (l_{nom})				
300, 600 and 1000 mm ($\varnothing 100 - 200$ mm)				
600 and 1000 mm ($\varnothing 250 - 315$ mm)				
600, 1000 and 1250 mm ($\varnothing 400 - 800$ mm)				
Model (m)				
3, 4				

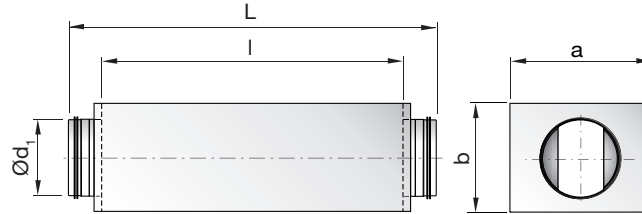
Example: KVAPL - 200 - 1000 - 3



Circular straight low-built silencer KVAPL

Dimensions and sound data

KVAPL model 3 & 4



Ød _i [nom]	l [nom]	a x b [mm] [mm]		Insertion loss [dB] for centre frequency [Hz]								l [mm]	L [mm]	Model	
				63	125	250	500	1k	2k	4k	8k			3 [kg]	4 [kg]
100	300	252	154	7	9	12	20	23	23	20	12	278	358	2,3	2,5
100	600	252	154	9	15	19	38	50	50	49	28	591	671	3,8	4,0
100	1000	252	154	14	22	28	47	50	50	50	42	1001	1081	5,8	6,1
125	300	263	177	5	9	11	16	19	19	15	9	313	393	2,7	2,8
125	600	263	177	8	13	18	34	44	47	41	24	626	706	4,2	4,5
125	1000	263	177	11	21	28	46	50	50	50	41	1036	1116	6,3	6,7
160	300	280	212	4	6	10	14	16	16	11	8	313	393	3,1	3,2
160	600	280	212	10	9	17	28	36	41	28	19	626	706	4,8	5,0
160	1000	280	212	13	15	27	38	50	50	47	29	1036	1116	7,2	7,3
200	300	361	253	4	4	9	10	14	13	10	8	313	393	3,9	4,1
200	600	361	253	8	9	17	20	31	31	20	14	626	706	6,3	6,6
200	1000	361	253	14	12	27	36	50	50	32	20	1036	1116	9,4	9,9
250	600	431	303	7	7	13	16	26	22	16	13	591	711	8,9	9,2
250	1000	431	303	13	10	21	27	43	37	24	18	1001	1121	13,0	13,5
315	600	458	368	6	5	11	14	22	18	10	10	591	711	10,3	10,9
315	1000	458	368	11	7	18	25	38	29	17	13	1001	1121	14,6	15,5
400	600	518	453	5	5	9	13	14	10	8	8	591	751	15,9	16,7
400	1000	518	453	6	7	15	21	26	16	10	10	1001	1161	19,4	20,7
400	1250	518	453	7	9	18	25	32	19	12	13	1215	1375	26,0	28,9
500	600	702	555	4	5	7	12	12	8	7	7	591	751	21,8	22,7
500	1000	702	555	5	7	11	18	21	12	9	9	1001	1161	31,2	32,8
500	1250	702	555	6	9	13	23	26	14	10	11	1215	1375	36,4	38,2
630	600	751	685	4	5	6	11	10	7	6	6	591	751	25,3	26,4
630	1000	751	685	5	6	12	19	15	8	7	8	1001	1161	37,6	41,0
630	1250	751	685	6	9	12	21	20	11	9	10	1215	1375	48,4	50,7
800	600	922	856	3	5	6	10	8	5	4	3	591	751	41,1	41,6
800	1000	922	856	3	8	8	14	11	7	6	5	1001	1161	58,0	58,9
800	1250	922	856	5	8	10	18	14	8	7	7	1215	1375	66,5	67,6

