

T-piece without flange for gypsum

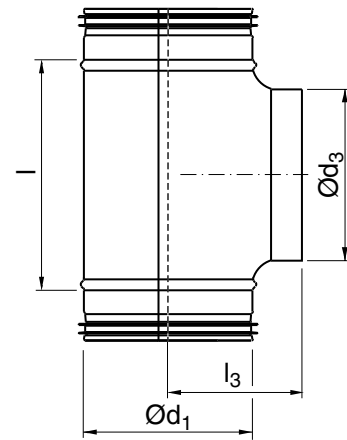
TCPUGYPS



Description

Short branch with female end.

Dimensions



$\varnothing d_1$ nom	$\varnothing d_3$ nom	l [mm]	l_3 [mm]	m [kg]
80 *	80	140	80	0,33
100 **	100	130	85	0,27
125	100	130	100	0,44
125 **	125	165	100	0,53
160	160	229	117	0,82

* Made with saddle PS

** Made with rolled over edge on the branch

Ordering example

