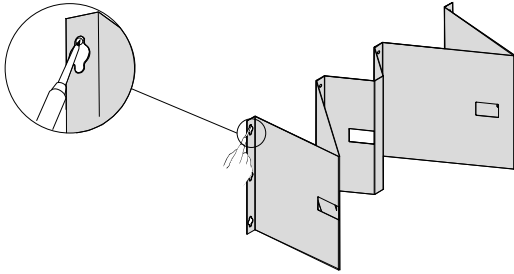


Lindab **Duct suspension**

MDH – M-shaped duct holder

Mounting instruction

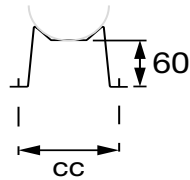
Mount duct holder



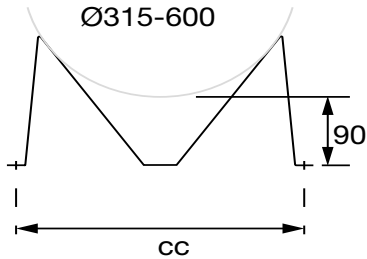
Hold the duct holder in desired position. Mark the top of one of the upper key-holes using a pen. Measure and mark where the other upper key hole should be positioned according to the table. Make sure that the holder is leveled. Fasten two screws in the markings in an appropriate manner depending on the surface it will be fastened to.

Ø dim nom	cc mm
100	125
112	136
125	149
140	160
150	168
160	175
180	197
200	212
224	229
250	249
280	270
300	285
315	341
355	375
400	414
450	456
500	499
560	550
600	585
630	614
710	682
800	759
900	845
1000	931
1120	1034
1250	1149

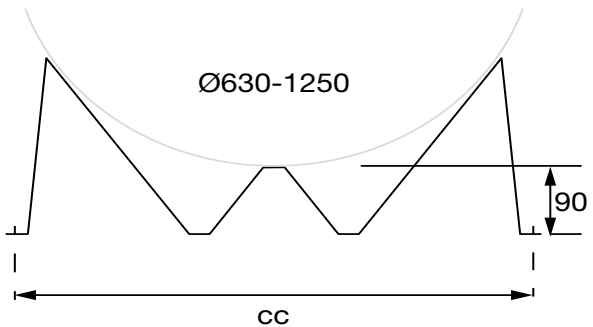
Ø100-300

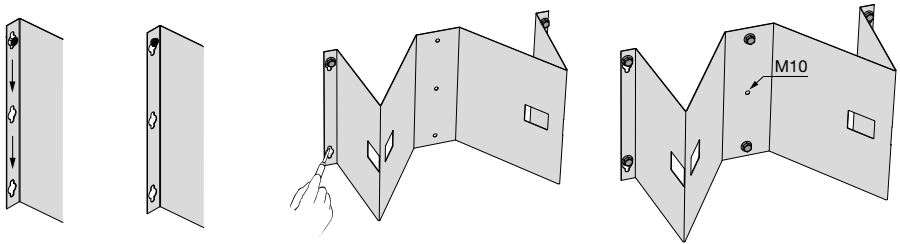


Ø315-600



Ø630-1250

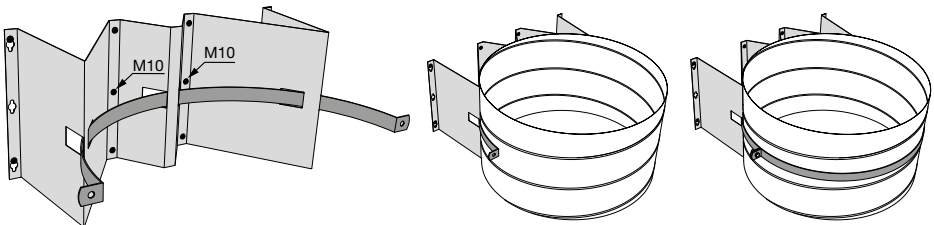




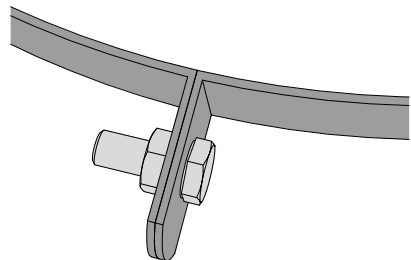
Hang the holder in the two screws and mark the two lower key holes and at least one of the holes in the middle.

Fasten screws in the markings and tighten all screws.

Mount duct



Slip one half of a suspension bracket, UVH 30, through the holders rectangular holes. Hold the duct against the holder and fix the other half of the suspension bracket so that the duct is attached to the holder.

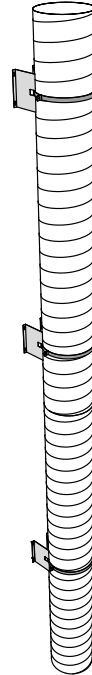


Suspension

Each duct is secured with at least one holder.

For vertical suspension the top duct is always secured with two holders.

The height of the duct holder is adapted to fit with Lindab's fittings, both bends, BKU and BU and T-pieces, TCPU and TCU.



For transition between dimensions an eccentric reducer should be used.

