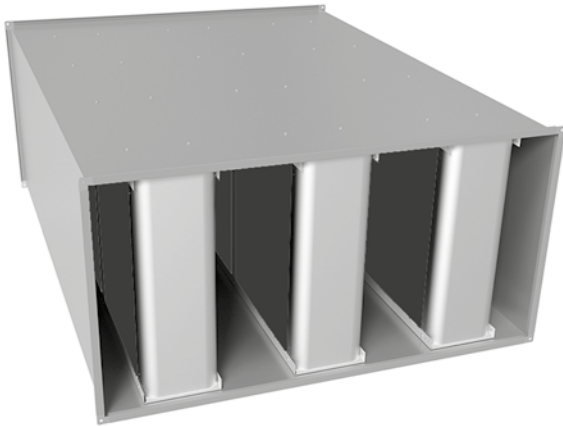


Rectangular straight attenuator

MINKA



Description

MINKA is a rectangular duct attenuator in galvanized steel with splitters filled with mineral wool attenuation material. Wool is covered with fleece to prevent fibres coming out to the airflow.

Bigger attenuators are reinforced by an outer modular frame.

Attenuator is equipped with joining profile LS1, RJFPC3 20, RJFPC3 30 or RJFPC3 40.

Attenuators can also be ordered with splitters protected by perforated plate.

Additional thermal insulation 50 mm (LE50) or more and fire insulation available on request.

To size the appropriate attenuator you can use our IT-online tool LindQST or DIMsilencer, where splitter distance, length and height can be optimized for the best performance.

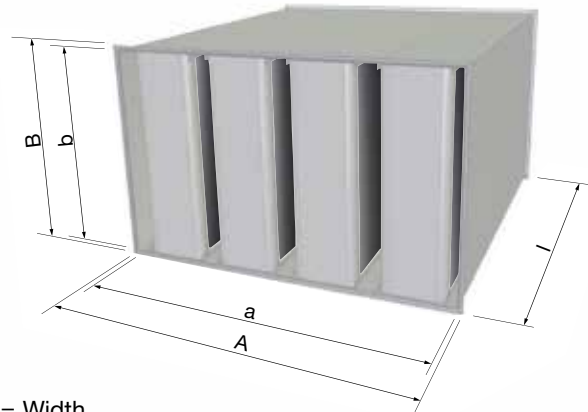
Tested according to ISO 7235 standard.

For special material and sizes, please contact your local Lindab sales department.

MINKA attenuator comes in two models; Non-openable MINKA and openable fully cleanable MINKA-A. The casing length of MINKA-A is 150 mm longer than MINKA with the same splitter length.

Dimensions

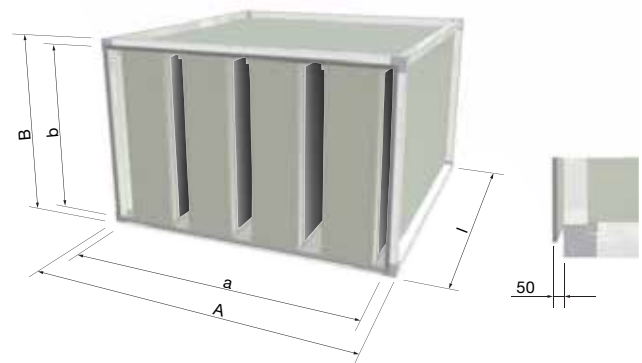
MINKA dimensions without reinforcement aluframe and without thermal insulation (LE50)



a = Width
 $A = a + 40 - 80 \text{ mm}^*$
 b = Height
 $B = b + 40 - 80 \text{ mm}^*$
 l = Length

* Depending on the joining profile.

MINKA attenuator dimensions with reinforcement frame



a = Width
 $A = a + 100 \text{ mm}$
 b = Height
 $B = b + 100 \text{ mm}$
 l = Length

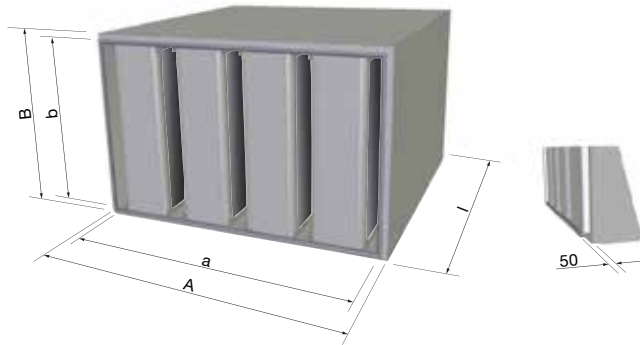
- If overall dimension $a + b + l > 5\text{m}$, the attenuator is reinforced by an outer aluminium modular frame profile.
- Special reinforcement frames available in smaller sizes on request

Rectangular straight attenuator

MINKA

Dimensions

MINKA attenuator dimensions with 50 mm thermal insulation (LE50)



a = Width
 A = a + 100 mm
 b = Height
 B = b + 100 mm
 l = Length

Order code

Product	MINKA	P	a	b	l	c	d	e	f
Type									
MINKA rectangular duct attenuator									
Splitters with mineral wool									
Product code (P)									
Calculate by LindQST or DIMsilencer									
Nominal dimensions (a)									
Width (a) in mm									
Min. - Max. 400 - 3000 mm									
Height (b) in mm									
Min. - Max. 500 - 3000 mm									
Length (l) in mm									
Min. - Max. 500 - 3000 mm									
Connection type (c)									
1 = LS1									
2 = RJFPC3 20									
3 = RJFPC3 30									
4 = RJFPC3 40									
Insulation (d)									
0 = Without thermal insulation									
LE50 = 50 mm thermal insulation									
Splitter protection (e)									
0 = Without perforated plate									
E = With perforated plate Insulation (d)									
Frame (f)									
0 = Without reinforcement frame									
R = With reinforcement frame									

Example: MINKA - 4005 - 900x600 - 900 - 1 - 0 - 0 - 0