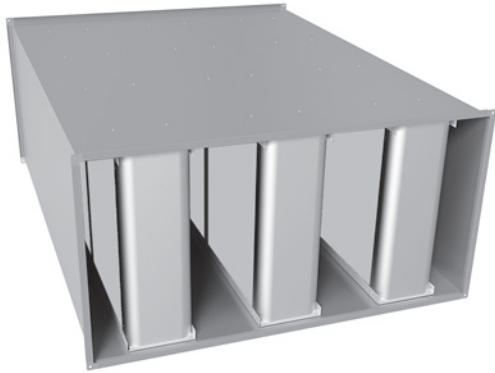


Rectangular straight attenuator

DACKA



Description

DACKA is a rectangular duct attenuator in galvanized steel* with splitters filled with Acutec® attenuation material. Acutec® is a hygienic and washable polyester absorption material with high airflow and shock resistant non-woven fleece finishing and no loose fibres.

Larger attenuators are reinforced by an outer modular frame.

Attenuator is equipped with joining profile LS1, RJFPC3 20, RJFPC3 30 or RJFPC3 40.

Attenuators can also be ordered with splitters protected by perforated plate.

Additional thermal insulation 50 mm (LE50) or more and fire insulation on request.

To size the appropriate attenuator you can use our IT-online tool LindQST or DIMsilencer, where splitter distance, length and height can be optimized for the best performance.

Tested according to ISO 7235 standard.

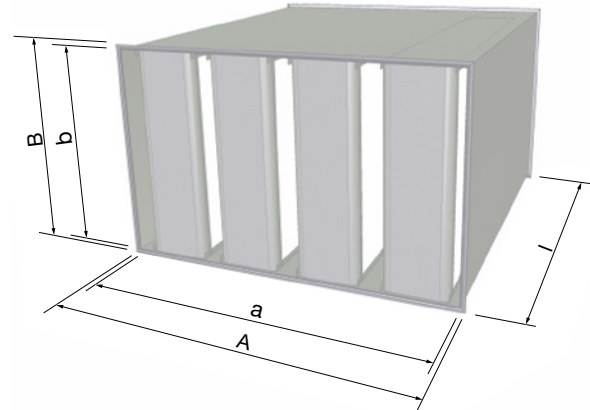
For special material and sizes, please contact your local Lindab sales department.

DACKA attenuator comes in two models; Non-openable DACKA and openable fully cleanable DACKA-A.

The casing length of DACKA-A is 150 mm longer than DACKA with the same splitter length.

Dimensions

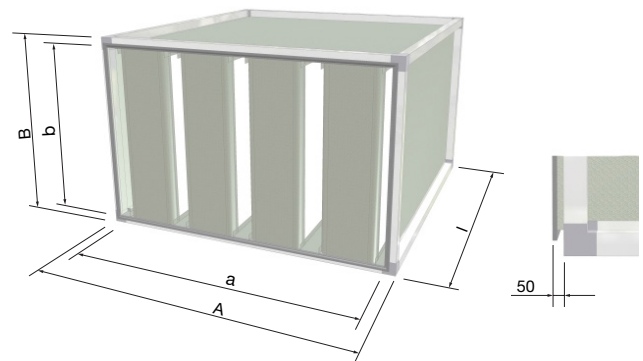
Dacka dimensions without reinforcement aluframe and without thermal insulation (LE50).



a = Width
 A = a + 40 - 80 mm*
 b = Height
 B = b + 40 - 80 mm*
 l = Length

* Depending on the joining profile.

DACKA attenuator dimensions with reinforcement frame.



a = Width
 A = a + 100 mm
 b = Height
 B = b + 100 mm
 l = Length

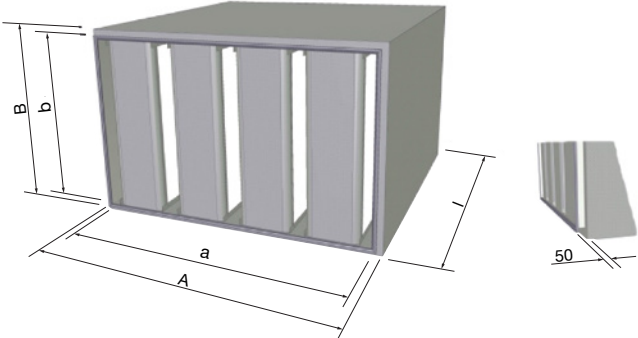
- If overall dimension $a + b + l > 5$ m, the attenuator is reinforced by an outer aluminium modular frame profile.
- Special reinforcement frames available in smaller sizes.

Rectangular straight attenuator

DACKA

Dimensions

DACKA attenuator dimensions with 50 mm thermal insulation (LE50).



- a = Width
- A = a + 100 mm
- b = Height
- B = b + 100 mm
- l = Length

Order code

Product	DACKA	P	a	b	l	c	d	e	f
Type DACKA rectangular duct attenuator Splitters with Acutec® polyester									
Product code (P) Calculate by LindQST or DIMsilencer									
Nominal dimensions (a) Width (a) in mm									
Height (b) in mm Min. - Max. 300 - 3000 mm									
Length (l) in mm Min. - Max. 500 - 3000 mm									
Connection type (c) 1 = LS1 2 = RJFPC3 20 3 = RJFPC3 30 4 = RJFPC3 40									
Insulation (d) 0 = Without thermal insulation LE50 = 50 mm thermal insulation									
Splitter protection (e) 0 = Without perforated plate E = With perforated plate Insulation (d)									
Frame (f) 0 = Without reinforcement frame R = With reinforcement frame									

Example: DACKA - 5005 - 900x600 - 900 - 1 - 0 - 0 - 0