

# Room sensor

# TG-R5...



TG-R5... are room sensors intended for use with the Aqualine, PULSER, TM, TTC, Prigo and Floorigo ranges.

Sensor with NTC-element for measuring room temperature.

Resistance measurements can only be made when the sensor is not connected to a controller.

## Models

Model	Temperature range
TG-R530	0...30°C
TG-R550	20...50°C
TG-R540*	0...40°C
TG-R530M**	0...30°C

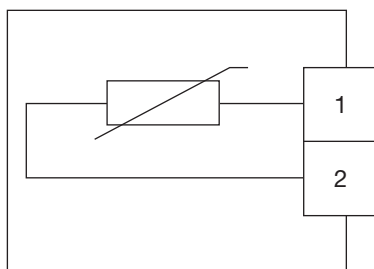
\*For thermostats in the Prigo and Floorigo ranges.

\*\* For measuring average room temperature, two TG-R530M are connected in series.

## Technical data

Protection class: IP30  
 Sensor element: Linearised NTC sensor. Accuracy better than +/- 1°C.  
 Colour Cover: Polar white RAL9010  
 Bottom part: Dark gray

## Wiring



## Temperature resistance table\*

0...30°C	20...50°C	Resistance (kOhm)	0...40°C	Resistance (kOhm)
0	20	15.00	0	15.00
1		14.83	5	14.375
2		14.67	10	13.75
3		14.50	15	13.125
4		14.33	20	12.5
5	25	14.17	25	11.875
6		14.00	30	11.25
7		13.83	35	10.625
8		13.67	40	10.00
9		13.50		
10	30	13.33		
11		13.17		
12		13.00		
13		12.83		
14		12.67		
15	35	12.50		
16		12.33		
17		12.17		
18		12.00		
19		11.83		
20	40	11.67		
21		11.50		
22		11.33		
23		11.17		
24		11.00		
25	45	10.83		
26		10.67		
27		10.50		
28		10.33		
29		10.17		
30	50	10.00		

\*Does not apply to TG-R530M.

## Dimensions (mm)

