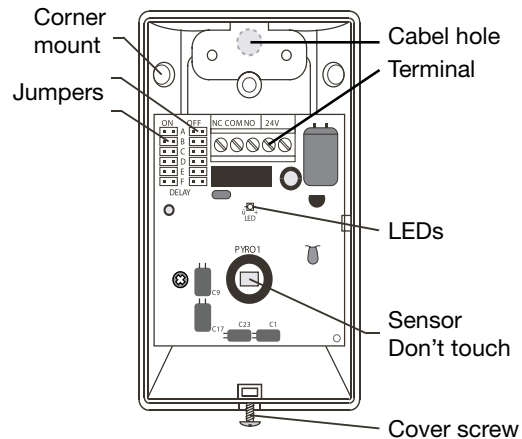
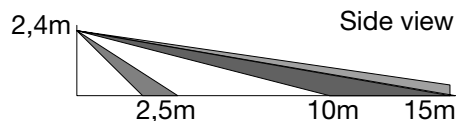
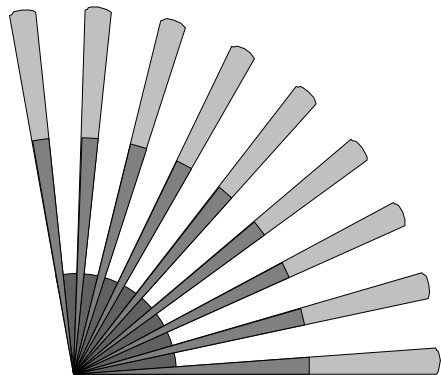


IR24-P



Read this instruction before installation and wiring of the product.

100°, 15x15 m at 25°C Plan view



INSTRUCTION

Occupancy sensor

IR24-P is a passive infrared occupancy sensor suitable for use in “on demand” control of ventilation systems or in intrusion alarm circuits.

Installation

For best coverage IR24-P should be placed 6...8 feet above floor level in a location with an unhindered view of the area to be monitored. Avoid exposure to direct sunlight or other powerful head sources. For corner mounting the two corner mounting holes in the casting may be used. For other wall mounting or for ceiling mounting use the supplied mounting bracket. Fasten the bracket according to the appropriate figure. Fasten the unit to the bracket and lead the cable through the access tube in the bracket and through the cable hole in the housing. Align the unit and lock in position by tightening the locking screw on the bracket. Replace the front cover.

Wiring

Supply voltage: 24 V AC/DC ± 2 V
 Power consumption: 5mA @ 24 V AC
 Relay: Form C, 0,2 A, 30 V DC

Functions

IR24-P is equipped with adjustable ON- and OFF-delays. IR24-P is normally in standby mode with the output relay unactivated. On detecting a movement the ON-delay is activated. The relay remains unactivated. When the ON-delay time expires the IR24-P enters a 1-minute waiting period. If no movement is detected during the waiting period the IR24-P reverts to standby mode. If however a movement is detected during the waiting period, the output relay will be activated and the OFF-delay initiated. Any detection during OFF-delay will restart the delay time. If for example the OFF-delay will restart the delay timer. If for example the OFF-delay has been set to 5 minutes the relay will remain activated until 5 minutes after the last detection. Thereafter the IR24-P reverts to standby mode. Setting of the delay times is done using two jumpers on the PCboard. Delay times as in table below.

	A	B	C	D	E	F
ON	0 sec.	10 sec.	30 sec.	1 min.	5 min.	10 min
OFF	10 sec.	1 min	5 min.	10 min.	20 min	30 min

INSTRUCTION

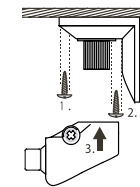
Function test

On completing the installation a function test should be run. Connect supply voltage and wait for 25 seconds for warm up. The green LED will blink during warm up. Move about over the area to be monitored. the red LED will indicate detection. If detection seems unsatisfactory the unit may need realignment.

EMC emissions & immunity standards

This product conforms with the requirements of European EMC standards CENELEC EN 50081-1 and EN 50082-1 and carries the CE mark.

Ceiling mount



Wall mount

