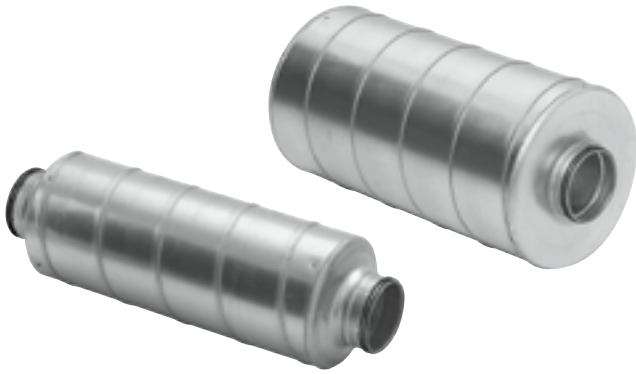


Circular straight silencer

SLU



Description

SLU is a circular straight silencer.

Nominal insulation thicknesses are 25 mm, 50 mm or 100 mm.

Attenuation material is mineral wool. The SLU's are made of strong outer spiral seamed tube and an inner tube made of sheet steel with small openings to be able to withstand mechanical cleaning and at the same time not interfere with the insertion loss.

The space between the inner and outer ducts is filled with mineral wool and the inner duct is covered with a nonwoven cloth to prevent fibres from getting into the duct system.

SLU can be cleaned by rotating nylon brushes, vacuum cleaner or damp cloth.

Tested according to ISO 7235 standard.

For special requirements such as material, sizes and flanges - this can be made on request. Please contact Lindab sales.

Order code

Product	SLU	200	900	50
SLU				
Connection ($\varnothing d_1$) in mm				
80 - 315 mm (25 mm insulation)				
63 - 400 mm (50 mm insulation)				
315 - 800 mm (100 mm insulation)				
Length (l_{nom}), in mm				
600 - 1200 mm (25 mm insulation)				
300 - 1200 mm (50 mm insulation)				
600 - 1500 mm (100 mm insulation)				
Nominal insulation thickness in mm				
25, 50 or 100 mm				

Example: SLU 200 - 900 - 50

Technical data

To select the appropriate attenuator and optimize connection size and length to achieve the best performance please use our online tool **LindQST**.

[SLU on LindQST >>](#)



Circular straight silencer

SLU 25

Dimensions and sound data

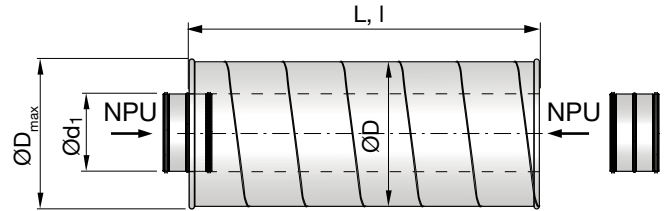
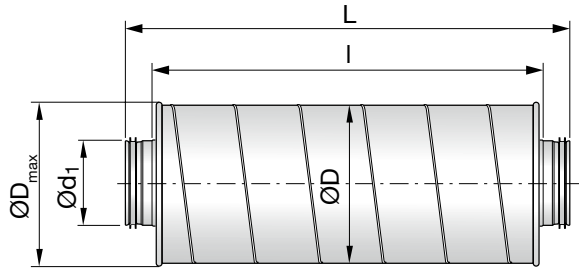
Dimensions and sound data for silencer with 25 mm insulation.

Ø ≤315

Sizes ≤315 are supplied with preinstalled Safe-connectors.

Ø ≥400

Size ≥400 is supplied with loose NPU-couplings.



Ød ₁ [mm]	l _{nom} [mm]	Insertion loss [dB] for centre frequency [Hz]								ØD _{max} [mm]	ØD [mm]	l [mm]	L [mm]	m [kg]
		63	125	250	500	1k	2k	4k	8k					
80	600	4	4	6	14	32	44	38	15	145	140	600	678	2,0
80	900	4	5	10	20	43	50	50	25	145	140	900	978	2,8
100	600	3	3	5	12	27	44	29	14	155	150	600	678	2,3
100	900	3	3	7	15	38	50	43	21	155	150	900	978	3,1
100	1200	3	3	9	19	47	50	50	27	155	150	300	378	4,0
125	600	2	2	4	9	23	39	18	10	185	180	600	678	2,8
125	900	2	3	6	13	34	48	27	15	185	180	900	978	3,8
125	1200	2	3	7	16	39	50	33	18	185	180	1200	1278	4,9
140	600	3	3	4	10	22	33	15	8	205	200	600	678	3,1
140	900	2	2	5	12	29	43	21	12	205	200	900	978	4,3
150	600	1	2	3	9	21	33	14	11	205	200	600	678	3,5
150	900	1	2	5	12	29	47	20	13	205	200	900	978	4,9
160	600	1	4	3	8	21	27	11	9	229	224	600	678	3,5
160	900	1	3	4	10	26	40	16	12	229	224	900	978	7,1
160	1200	1	2	5	13	32	49	20	14	229	224	1200	1278	6,1
180	600	1	1	2	7	15	25	12	11	229	224	600	678	3,6
180	900	1	1	4	9	22	38	18	12	229	224	900	978	5,00
200	600	1	1	2	6	18	22	11	11	257	250	600	678	4,3
200	900	1	1	4	9	25	31	15	13	257	250	900	978	5,7
200	1200	1	1	5	12	32	39	18	14	257	250	1200	1278	7,3
224	600	1	1	2	6	18	14	7	7	285	280	600	678	5,3
224	900	1	1	3	8	23	20	9	9	285	280	900	978	7,1
250	600	1	1	2	5	15	14	7	8	307	300	600	720	5,7
250	900	1	1	3	7	19	19	9	10	307	300	900	1020	7,8
250	1200	3	2	4	9	24	24	11	11	307	300	1200	1320	9,8
315	900	0	0	2	5	16	14	7	9	362	355	900	1020	9,6
315	1200	1	1	2	6	19	17	9	10	362	355	1200	1320	11,9



Circular straight silencer

SLU 50

Dimensions and sound data

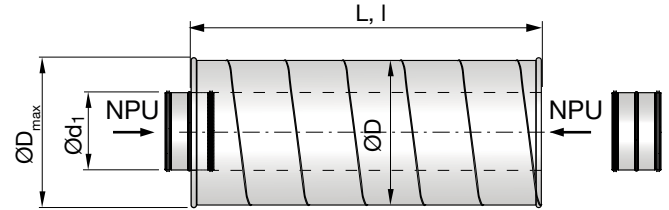
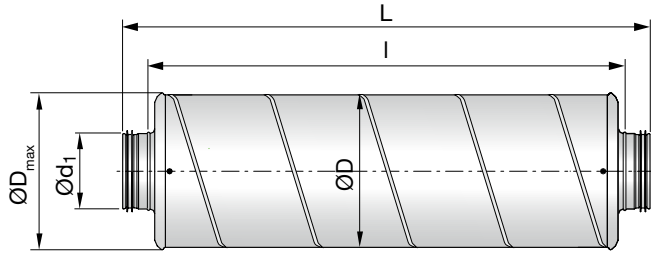
Dimensions and sound data for silencer with 50 mm insulation.

Ø ≤315

Sizes ≤315 are supplied with preinstalled Safe-connectors.

Ø ≥400

Size ≥400 is supplied with loose NPU-couplings.



Ød ₁ [mm]	l _{nom} [mm]	Insertion loss [dB] for centre frequency [Hz]								ØD _{max} [mm]	ØD [mm]	I [mm]	L [mm]	m [kg]
		63	125	250	500	1k	2k	4k	8k					
63	300	0	6	13	21	32	44	36	26	165	160	300	378	1,5
63	600	0	7	20	35	50	50	50	34	165	160	600	678	2,7
80	300	1	5	8	15	25	25	21	15	185	180	300	378	2,0
80	600	2	8	14	28	49	50	47	24	185	180	600	678	3,4
80	900	3	10	21	40	50	50	50	34	185	180	900	978	4,9
80	1200	4	13	27	50	50	50	50	43	185	180	1200	1278	6,4
100	300	1	5	7	15	25	25	21	13	205	200	355	432	2,1
100	600	1	7	12	25	43	48	35	20	205	200	655	732	3,5
100	900	2	10	17	34	50	50	49	28	205	200	955	1032	5,0
100	1200	3	12	22	44	50	50	50	35	205	200	1255	1332	6,5
125	300	0	4	5	13	23	20	16	11	229	224	370	448	2,6
125	600	1	5	10	22	39	37	26	16	229	224	670	748	4,3
125	900	1	7	14	30	50	50	37	21	229	224	970	1048	6,0
125	1200	2	9	18	39	50	50	47	26	229	224	1270	1348	7,7
160	300	0	3	5	11	22	16	11	7	266	260	375	454	2,7
160	600	1	4	8	19	37	28	17	11	266	260	675	754	4,7
160	900	1	5	12	27	50	39	24	14	266	260	975	1054	6,7
160	1200	2	6	15	35	50	50	30	17	266	260	1275	1354	8,6
200	300	0	2	4	9	19	11	7	5	306	300	390	468	3,8
200	600	1	3	8	15	28	19	12	8	306	300	690	768	6,2
200	900	2	4	11	21	37	28	16	10	306	300	990	1068	8,7
200	1200	2	5	14	27	46	36	21	13	306	300	1290	1368	11,1
250	300	0	1	3	7	15	8	5	5	362	355	300	418	4,9
250	600	1	2	6	14	26	14	8	7	362	355	600	718	7,9
250	900	1	3	9	19	38	19	11	9	362	355	900	1018	10,9
250	1200	2	4	11	24	50	24	13	11	362	355	1200	1318	13,9
315	300	0	1	2	6	12	5	4	4	427	415	310	430	6,5
315	600	0	2	4	10	22	9	6	7	427	415	610	730	10,1
315	900	2	3	7	16	31	13	8	9	427	415	910	1030	13,6
315	1200	2	3	8	20	39	16	9	10	427	415	1210	1330	17,2
400	300	0	1	2	3	3	2	3	1	508	500	300	300	7,9
400	600	0	2	4	8	10	5	4	4	508	500	600	600	12,9
400	900	0	2	5	12	16	7	5	6	508	500	900	900	18,0
400	1200	0	2	7	16	20	9	6	7	508	500	1200	1200	23,0

There is given max. attenuation values of 50 dB in the table above.



Circular straight silencer

SLU 100

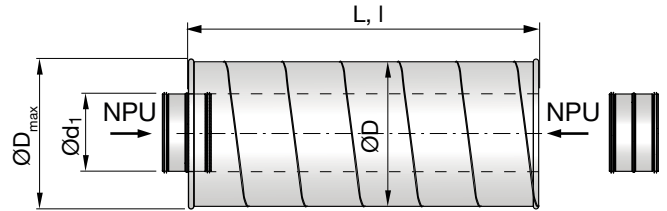
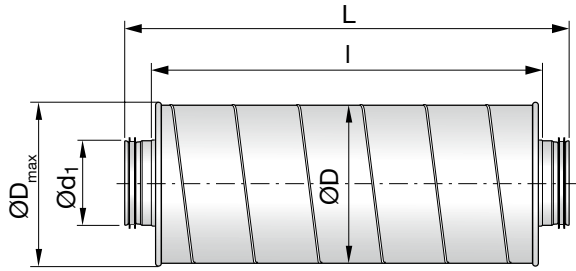
Dimensions and sound data for silencer with 100 mm insulation.

Ø ≤315

Sizes ≤315 are supplied with preinstalled Safe-connectors.

Ø ≥400

Size ≥400 is supplied with loose NPU-couplings.



Ød ₁ [mm]	l _{nom} [mm]	Insertion loss [dB] for centre frequency [Hz]								ØD _{max} [mm]	ØD [mm]	l [mm]	L [mm]	m [kg]
		63	125	250	500	1k	2k	4k	8k					
100	300	8	6	15	20	22	20	10	8	307	300	300	380	3,7
100	600	12	10	20	33	45	41	20	13	307	300	600	680	6,0
100	900	14	12	26	39	50	50	27	16	307	300	900	980	8,4
125	300	3	8	13	19	19	17	8	7	322	315	300	380	4,0
125	600	7	8	18	31	39	35	16	12	322	315	600	680	6,5
125	900	9	10	23	42	50	50	30	17	322	315	900	980	9,0
160	300	2	6	10	14	16	11	5	4	362	355	300	380	5,0
160	600	6	8	15	26	31	23	10	9	362	355	600	680	7,9
160	900	7	9	20	38	47	33	14	12	362	355	900	980	10,8
160	1200	8	12	26	47	50	46	19	13	362	355	1200	1280	13,8
200	600	4	5	12	23	26	15	7	9	408	400	600	680	9,7
200	900	5	6	18	33	40	22	10	10	408	400	900	980	13,1
200	1200	6	8	20	42	50	26	11	10	408	400	1200	1280	16,5
250	600	5	5	11	21	22	11	6	9	462	450	600	680	11,4
250	900	6	7	15	30	32	15	8	10	462	450	900	980	15,4
250	1200	7	9	19	37	43	19	11	12	462	450	1200	1280	18,9
315	600	2	5	9	14	12	6	4	5	508	500	600	720	14,3
315	900	3	6	13	20	19	10	6	7	508	500	900	1020	19,6
315	1200	4	8	16	27	25	15	9	10	508	500	1200	1320	24,9
400	600	4	5	8	10	7	4	4	6	615	600	600	600	17,2
400	900	4	5	10	17	13	6	6	8	615	600	900	900	23,6
400	1200	6	6	13	24	18	8	7	10	615	600	1200	1200	30,0
500	900	4	4	10	14	8	4	6	6	725	710	900	900	30,1
500	1200	3	5	11	21	12	6	7	9	725	710	1200	1200	37,8
630	900	2	3	7	12	5	4	4	5	877	850	900	900	40,3
630	1200	2	4	8	17	7	4	5	7	877	850	1200	1200	50,6
800	1200	2	3	8	11	5	4	5	6	1025	1000	1200	1200	66,7
800	1500	2	3	10	16	6	5	6	7	1025	1000	1500	1500	80,1

