



# Lindab **Indoor Climate Solutions**

Product overview Grilles





# For a better climate

Most of us spend the majority of our time indoors. Indoor climate is crucial to how we feel, how productive we are and if we stay healthy.

We at Lindab have therefore made it our most important objective to contribute to an indoor climate that improves people's lives. We do this by developing energy-efficient

ventilation solutions and durable building products. We also aim to contribute to a better climate for our planet by working in a way that is sustainable for both people and the environment.

[Lindab | For a better climate](#)

## Grilles from Lindab fits any need.

Supply and extract through ventilation grilles is traditionally used in all types of buildings. Supply is usually placed in the wall near the ceiling, or in the floor in long facades. Extract is usually placed in the ceiling or in the wall near the ceiling. Supply air near the floor or in the window-benches is typically used along facades in order to reduce drop in temperature or heating due to the sun, and often in a combination with ceiling diffusers. In the same manner, the ventilation grilles are also used in large numbers as convection grilles to conceal convector channels or window-benches or similar openings, where the ventilation grilles does not have an aerotechnical function.

In the Lindab programme of ventilation grilles, there are grilles for any purpose. We produce grilles in both aluminium and steel. Grilles can be mounted in the floor, wall, outer wall, ceiling and directly into circular air ducts and rectangular air ducts. Most of Lindabs grilles can be adjusted to specific measurements upon demand. The ventilation grilles are made in special customer-adjusted varieties to fit any need.



# Product overview aluminium grilles

## Deflection grilles

AD

**Air supply grilles single or double deflection with individually adjustable blades.**

**Size:** 100x75 mm; 1500x1500 mm

**Finish:** Aluminum anodized; RAL 9003 gloss 30  
Other RAL colours on request.

**Accessories:** Opposed blade damper (DGA, DGAN); mounting frame (MFA, MFAN); plenum (VBA, VBX, PBA, PBAN).

**Installation:** Clips (C, CN), visible screw holes (V), hidden screw (H).



## Linear grilles

AL

**Linear bar grilles with 0° or 15° inclination fixed blades and several types of frame can be used in many applications.**

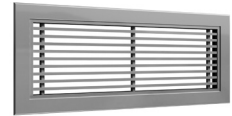
**Size:** 200x75 mm; 2000x600 mm; for lengths >2000 mm. AL can be delivered in multiple pieces as a linear continuous grille line.

**Finish:** Aluminum anodized; RAL 9003 gloss 30; other RAL colours on request.

**Accessories:** Opposed blade damper (DGA, DGAN); mounting frame (MFA, MFAN); plenum (VBA, VBX, PBA, PBAN).

**Installation:** Clips (C, CN), visible screw holes (V), hidden screw (H), for some models brackets (F) and mounting bridge (B).

**Options:** frame (25 mm, 20 mm, 9 mm, 6 mm); removable grid; inspection doors.



## Egg crate grilles

AE

**Extract grilles with egg crate grid 0° or 45° inclination.**

**Size:** 100x75 mm; 1500x1200 mm

**Finish:** Aluminum anodized; RAL 9003 gloss 30  
Other RAL colours on request.

**Accessories:** Opposed blade damper (DGA, DGAN); mounting frame (MFA, MFAM); plenum (VBA, VBX, PBA, PBAN).

**Installation:** Clips (C, CN), visible screw holes (V), hidden screw (H) only for mesh 0° inclination.



## Return grilles

AR

**Extract grilles with fixed blades, 58° angle.**

**Size:** 100x75 mm; 1500x1200 mm

**Finish:** Aluminum anodized; RAL 9003 gloss 30  
Other RAL colours on request.

**Accessories:** Opposed blade damper (DGA, DGAN); mounting frame (MFA, MFAN); plenum (VBA, VBX, PBA, PBAN).

**Installation:** Clips (C, CN), visible screw holes (V).



## Egg crate ceiling grilles

AEC

**Extract grilles with egg crate grid 0° or 45° inclination and frame no flange used for the ceiling application.**

**Size:** 595x595 mm; 670x670 mm external dimension.

**Finish:** RAL 9003 gloss 30;  
Other RAL colours on request.

**Accessories:** Filter G3; fix kit of the filter, plenum.



## Filter grilles

AF

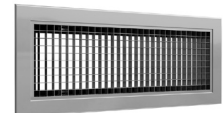
**Extract filterholder grilles with several type of grid as eggcrate grid 0° or 45° inclination or fixed blades 45-degree angle.**

**Size:** 200x100 mm; 1200x600 mm

**Finish:** Aluminum anodized; RAL 9003 gloss 30;  
Other RAL colours on request.

**Accessories:** Washable filter G3; rigid filter G3, plenum (PBAF).

**Installation:** Clips (C), magnets hinged (G); screw hinged (S); knob hinged (K).



# Product overview aluminium grilles

## Filter ceiling grilles

AFC

Extract filterholder grilles with several type of grid; eggcrate grid 0° or 45° inclination or fixed blades 45° angle or perforated plate. Push/pull closing system for easy access to filter.

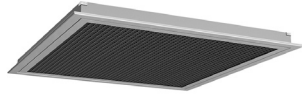
**Nominal sizes:** 400×400 mm; 1000×400 mm

**Ceiling sizes:** 595×295 mm; 595×595 mm; 620×620 mm; 670×670 mm; 1195×595 mm.

**Finish:** Aluminum anodized; RAL 9003 gloss 30  
Other RAL colours on request.

**Accessories:** Rigid filter G3, plenum.

**Installation:** Push/pull system.



## Curved blade grilles

AC

Supply grilles with curved adjustable blades, oriented 1-way or 2-way horizontal or vertical.

**Size:** 200×100 mm; 1500×500 mm; 1200×1200 mm

**Finish:** Aluminum anodized; RAL 9003 gloss 30  
Other RAL colours on request.

**Accessories:** Opposed blade damper (DGA, DGAN); mounting frame (MFA, MFAN); plenum (VBA, VBX, PBA, PBAN).

**Installation:** Clips (C, CN), visible screw holes (V), hidden screw (H).



## Transfer grilles

AT

Transfer air grilles for door or wall installation, used for transferring air between rooms.

**Size:** 200×100 mm; 1200×600 mm

**Finish:** Aluminum anodized; RAL 9003 gloss 30  
Other RAL colours on request.

**Accessories:** Counterframe.

**Installation:** Visible screw holes (V).



# Product overview steel grilles

## Deflection grilles

SD

Steel grilles single or double deflection with individually adjustable blades.

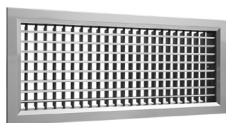
**Size:** 150x100 mm; 1200x500 mm

**Finish:** Galvanized steel; RAL 9003 gloss 30

Other RAL colours on request.

**Accessories:** Opposed blade damper (DGS); mounting frame (MFS).

**Installation:** Clips (C), visible screw holes (V), hidden screw (H).



## Stainless steel deflection grilles

SSD

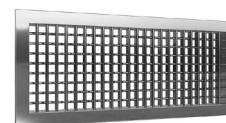
Stainless steel AISI 304 grilles single or double deflection blades or with fixed blades, 45° angle.

**Size:** 150x100 mm; 1200x500 mm

**Finish:** Stainless steel AISI 304 (BA finish).

**Accessories:** Opposed blade damper (DGSS); mounting frame (MFSS).

**Installation:** Visible screw holes (V), hidden screw (H).



## Round duct grilles

RGS

Supply or extract round steel grilles

with vertical or horizontal adjustable blades for direct installation in circular ducts.

**Size:** 325x75 mm; 1225x225 mm

**Finish:** Galvanized steel; RAL 9003 gloss 30

Other RAL colours on request.

**Accessories:** Blade damper; Straight sliding damper; Slanting sliding damper.

**Installation:** Visible screw holes.



# Product overview louver grilles

## Aluminum weather louver grilles

WLA

Aluminum weather louvres fixed blades used for outdoor air intake and extract air discharge.

Standard with bird net (N)

**Size:** Pitch 25 => 200x100 mm; 1500x1200 mm;

Pitch 50 => 400x250 mm; 2000x2000 mm;

Pitch 100 => 400x250 mm; 2000x2050 mm

**Finish:** Aluminum anodized; RAL colours on request.

**Accessories:** Insect net (I); bird net + insect net (NI) mounting frame (M, MFA).

**Installation:** Clips (C), visible screw holes (V).



## Steel weather louver grilles

WLS

Steel weather louvres fixed blades used for outdoor air intake and extract air discharge.

Standard with bird net (N)

**Size:** 200x200 mm; 2000x2000 mm

**Finish:** Galvanized steel; RAL colours on request.

**Accessories:** Insect net (I); bird net + insect net (NI) mounting frame (M).

**Installation:** Visible screw holes (V).



## Circular louver grilles

YGC

Circular fixed louver used for outdoor air intake and extract air discharge.

**Size:** Ø80; Ø1250

**Finish:** Ø80-500 cast aluminium

Ø630-1250 galvanised steel

Standard finish: untreated

**Accessories:** With bird net.

**Installation:** Visible screw holes.



## External wall grille

VR

With plenum and round safe connection square louvered grille for installation in external walls.

**Size:** Ø125; Ø400

**Finish:** Aluminium, Galvanised steel

Standard finish: Anodized

**Accessories:** With bird net.

**Installation:** Visible screw holes.





Most of us spend the majority of our time indoors. Indoor climate is crucial to how we feel, how productive we are and if we stay healthy.

We at Lindab have therefore made it our most important objective to contribute to an indoor climate that improves people's lives. We do this by developing energy-efficient ventilation solutions and durable building products. We also aim to contribute to a better climate for our planet by working in a way that is sustainable for both people and the environment.

[Lindab | For a better climate](#)