

Manifold

MAN



Description

The manifold can be used for both supply and exhaust air. It is available in several types and dimensions.

The manifolds are designed for floor installation but can be used at other locations as well.

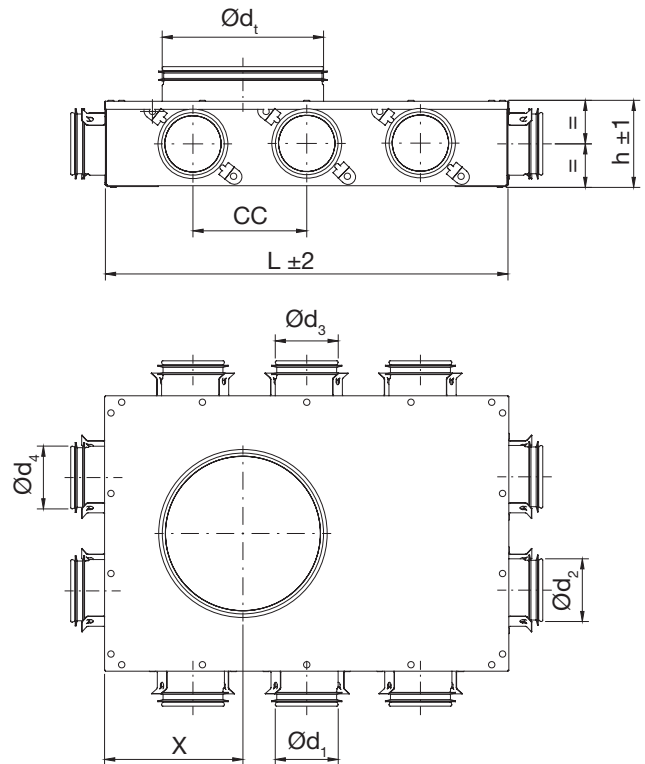
All types have couplings with Lindab safe sealings for connections of SR spiral-seamed ducts or semiflexible ducts LFPE. Boxes with Ø 76 couplings with Lindab safe sealings are intended for direct connection of the semiflexible duct LFPE. It is not intended for SR spiral-seamed duct.

The Smart Lock function allows you to fasten LFPE effortlessly to the Safe couplings.

Two turnable anchor plates, placed on the bottom of the manifold, can be used for fixation.

Fulfils the requirements for air tightness class D.

Dimensions



Type	Ød _t nom	Ød ₁ nom	Ød ₂ nom	Ød ₃ nom	Ød ₄ nom	X mm	cc mm	L mm	B mm	H mm	m kg
1	125	3×63	2×63	3×63		262	112	398	272	88	2,60
2	160	3×63	2×63	3×63		136	112	398	272	88	2,60
3	125	3×63	2×63	2×100	2×63	=	112, 176	398	272	114	2,80
4	100	3×63	63	2×100	63	=	173	398	272	140	2,90
5	100	3×63	2×63	3×63	2×63	=	112	398	272	88	2,70
6	100	4×63	2×63	6×63		=	83	648	200	88	3,20
7	100	3×63	2×63	125	2×63	=	112	398	272	135	2,90
8	100	3×63	2×63	125	2×63	=	112	398	272	140	3,00
9	100	3×63	2×63	125	2×63	=	112	398	272	140	3,00
10	100	3×63	76	125	76	=	112	398	272	140	2,90
11	100	3×63	76	2×100	76	=	112, 173	398	272	140	3,10
12	100	3×63	63	125	63	=	112	398	272	140	2,90
13	100	3×63	100	3×63		=	112	398	272	140	2,90
14	100	3×76	76, 125		76	=	112	398	272	140	2,90
15	100	3×76	2×76	125	2×76	=	112	398	272	140	2,90
16	100	3×76	2×76	125	2×76	=	112	398	272	140	2,90
17	100	3×76	2×76	125	2×76	=	112	398	272	140	2,90
18	100	3×76	76, 125		76	=	112	398	272	140	2,90
19	100	3×76	125	3×76		=	112	398	272	140	2,90
20	125	3×76	2×76	2×100	2×76	=	112, 176	398	272	116	2,80
21		3×76	2×76	125	2×76	-	112	398	272	140	2,90
22		3×63	2×63	125	2×63	-	112	398	272	135	2,90
23	125	6×63	2×63	6×63		84	83	648	200	88	3,30

Ordering example

