

# Lindab **NQ19**

Ceiling diffuser  
Installation instruction



# Installation instruction

# NQ19

## Overview



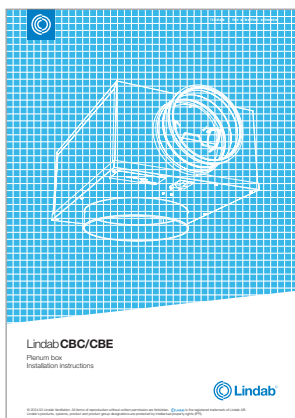
Supply air

NQ19-315 with 100 nozzles.

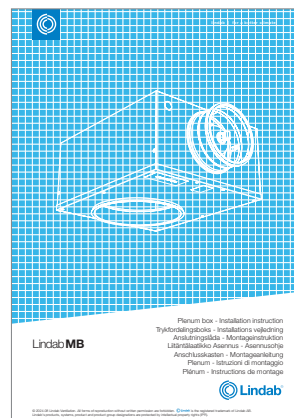
## Order code



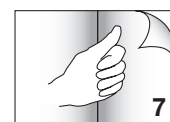
## CBC installation instruction



## MBB-S installation instruction



## Air patterns - Individually adjustable nozzles



Standard

**S** Swirl (rotation)

**S** 4-ways

**S** 3-ways

**S** 2-ways

**S** 2-ways (corner)

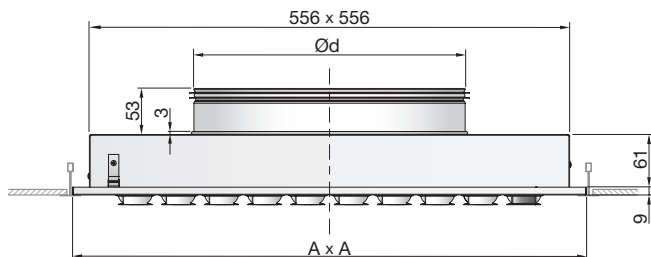
**S** 1-way

**S** Vertical

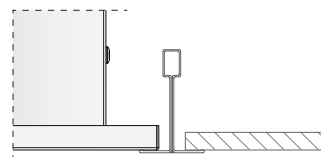
# Installation instruction

# NQ19

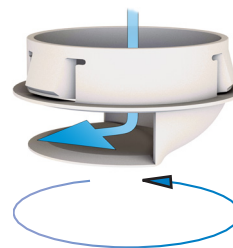
## Dimensions



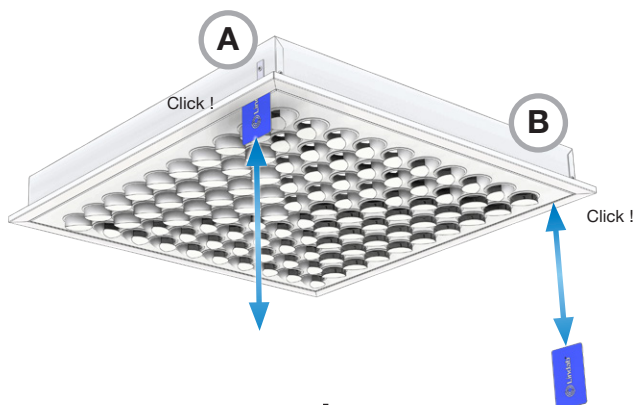
NQ19 Ød mm	Number of nozzles	A mm	m kg
160	36	595	5.2
200	64	595	5.0
250	81	595	4.9
315	100	595	4.7
400	121	595	4.5



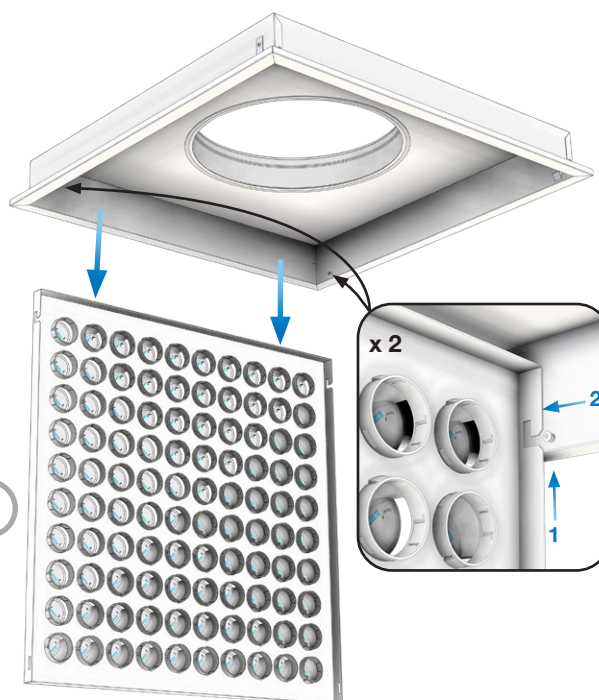
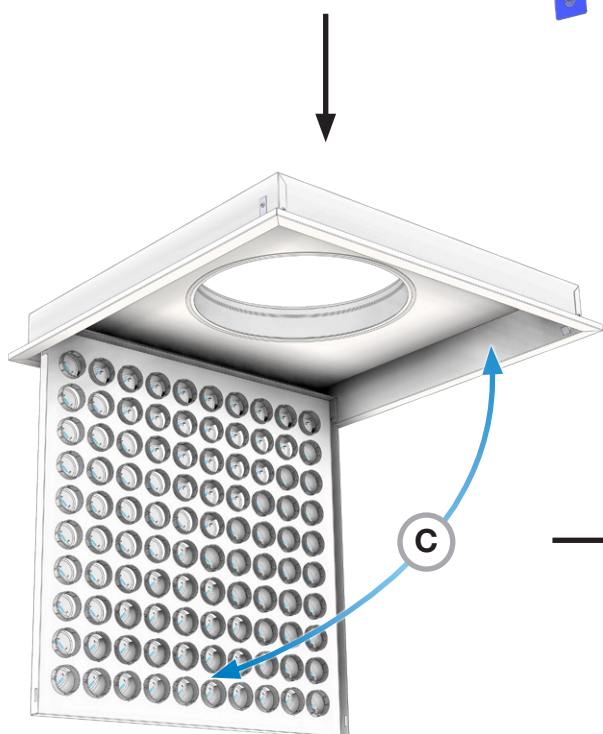
NQ19 upper part adapted to ceiling system 1



## Hinged faceplate



It is recommended to use a credit card to open the face plate.

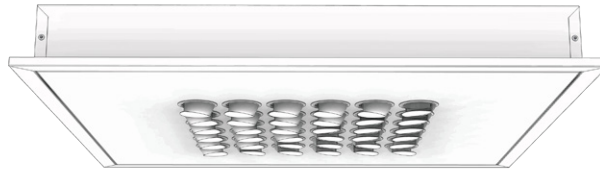


# Installation instruction

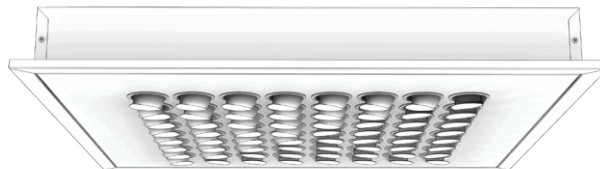
# NQ19

## NQ19 variants

**NQ19-160 (36 nozzles)**



**NQ19-200 (64 nozzles)**



**NQ19-250 (81 nozzles)**



**NQ19-315 (100 nozzles)**



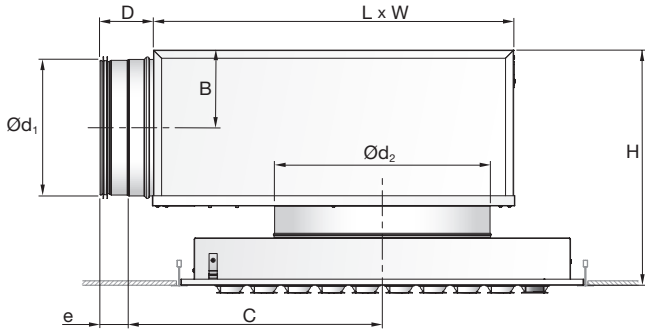
**NQ19-400 (121 nozzles)**



# Installation instruction

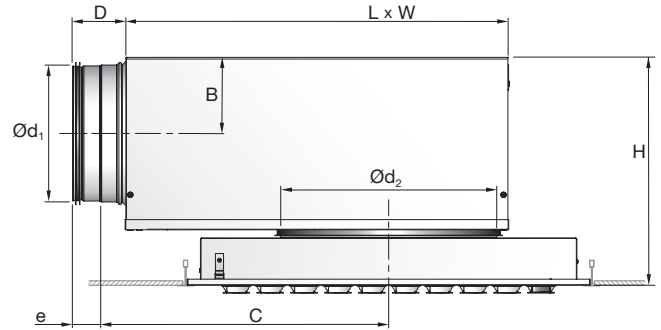
# NQ19

## NQ19 + CBC plenum box



Ød <sub>1</sub> mm	Ød <sub>2</sub> mm	No. of nozzles	B	C	D	e	H	L	W
mm									
100	160	36	65	231	78	40	248 - 286	312	248
125	160	36	78	250	78	40	273 - 311	331	248
125	200	64	78	270	78	40	273 - 311	371	288
160	200	64	95	295	78	40	307 - 345	396	288
160	250	81	95	320	78	40	307 - 345	446	338
200	250	81	115	345	78	40	347 - 385	471	338
200	315	100	115	377	78	40	347 - 385	536	403
250	315	100	140	423	118	60	398 - 436	563	405
250	400	121	140	466	118	60	398 - 436	648	490
315	400	121	173	536	118	60	463 - 501	718	490

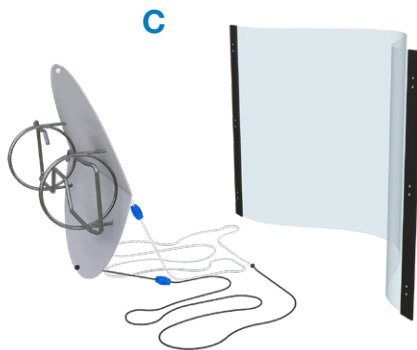
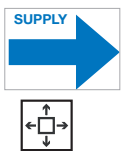
## NQ19 + MBB-S plenum box



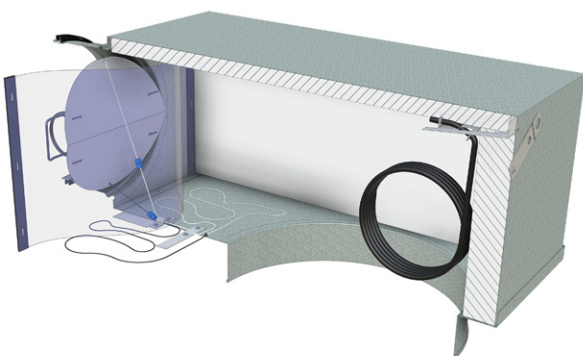
Ød <sub>1</sub> mm	Ød <sub>2</sub> mm	No. of nozzles	B	C	D	e	H	L	W
mm									
100	160	36	62	245	78	40	236 - 276	310	260
125	160	36	75	291	78	40	261 - 301	376	310
125	200	64	75	291	78	40	261 - 301	376	310
160	200	64	92	352	78	40	295 - 335	459	380
160	250	81	92	352	78	40	295 - 335	459	380
200	250	81	112	425	78	40	336 - 376	565	460
200	315	100	112	425	78	40	336 - 376	565	460
250	315	100	137	534	118	60	386 - 426	698	540
250	400	121	137	534	118	60	386 - 426	698	540
315	400	121	170	695	118	60	451 - 491	858	540

### C damper

#### CBC

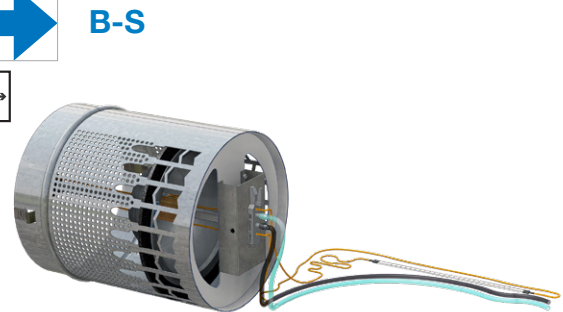
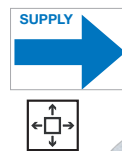


### C damper installed in CB plenum box

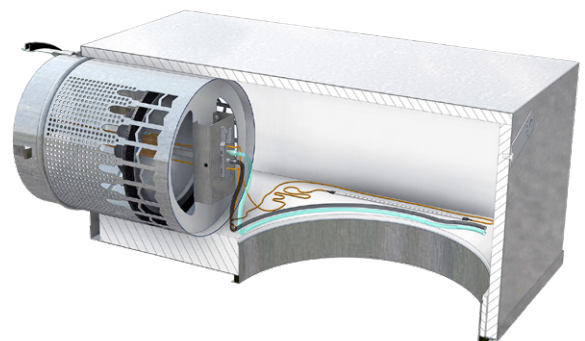


### B-S damper

#### MBB-S



### B-S damper installed in MB plenum box

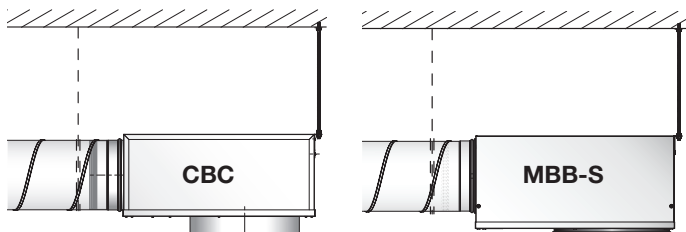


# Installation instruction

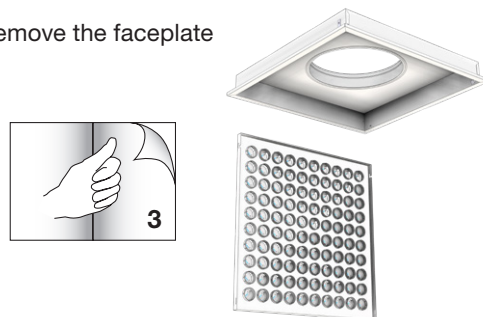
# NQ19

## Installation of NQ19 diffuser in CBC / MBB-S plenum box

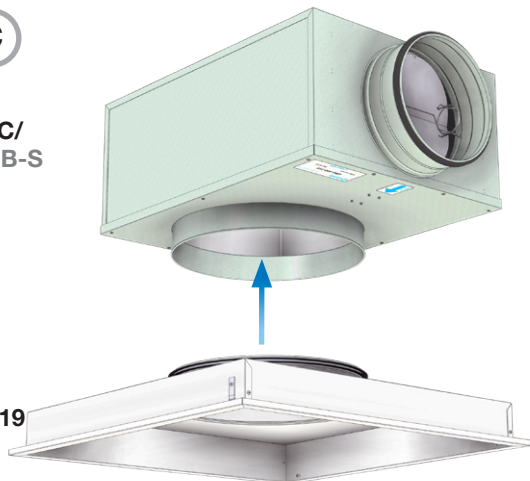
**A** Install the [CBC](#) or [MBB-S](#) plenum box in the ceiling.



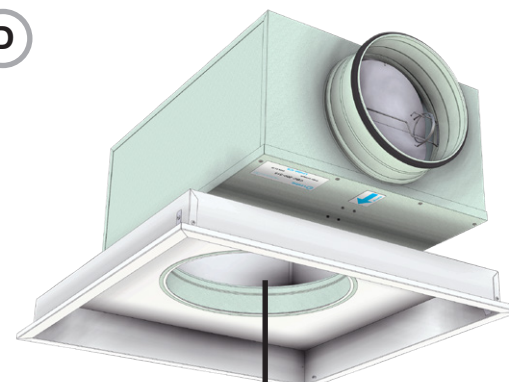
**B** Remove the faceplate



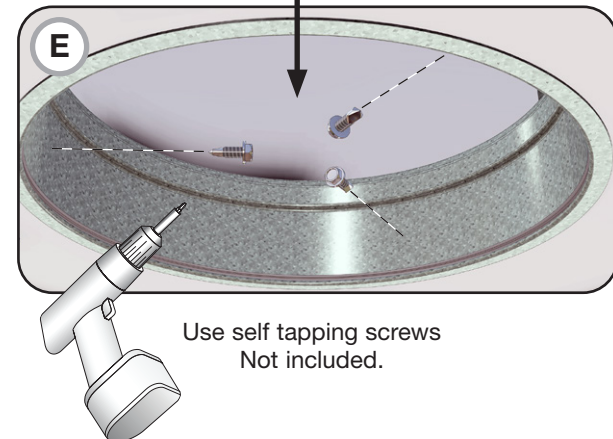
**C**  
CBC/  
MBB-S



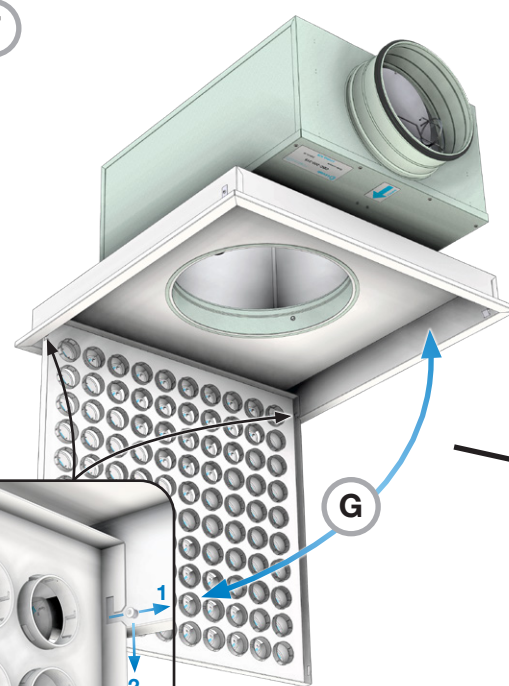
**D**



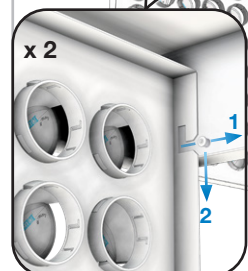
NQ19



**F**



**G**

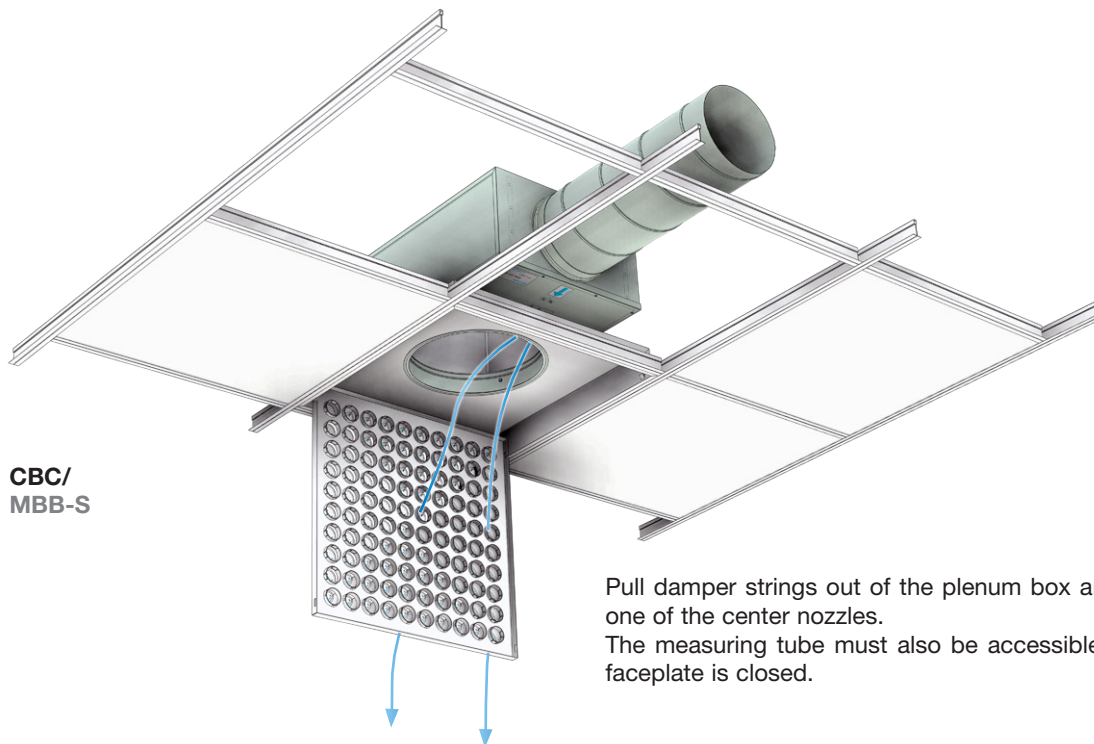


# Installation instruction

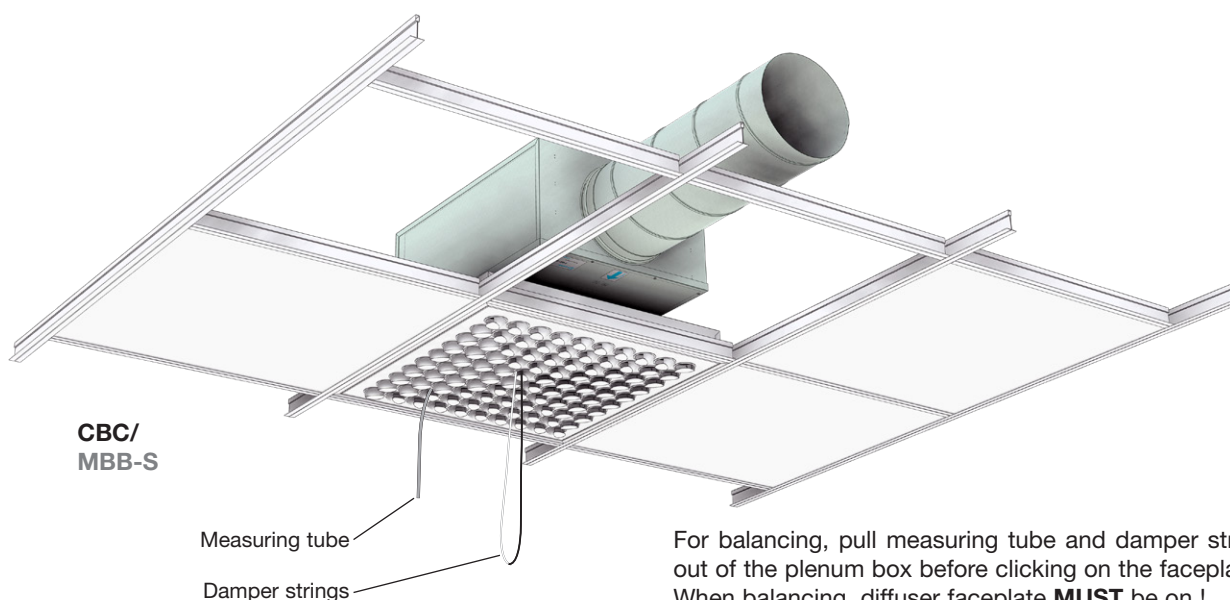
# NQ19

## Balancing

Go to the [CBC installation instruction](#) or [MBB-S installation instruction](#) for detailed balancing instructions and k-factors. See also the [airborne calculator](#) to configure your NQ19.



Pull damper strings out of the plenum box and through one of the center nozzles. The measuring tube must also be accessible when the faceplate is closed.



For balancing, pull measuring tube and damper strings out of the plenum box before clicking on the faceplate. When balancing, diffuser faceplate **MUST** be on !

## Maintenance

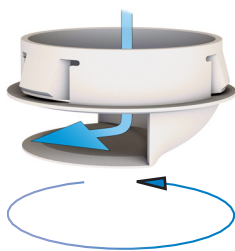
The hinged face plate can easily be opened and removed to enable cleaning of internal parts or to gain access to the duct or plenum box. The visible parts of the diffuser can be wiped with a damp cloth. The damper of the plenum box can also be taken out to allow full access to the supply duct. See the [CBC](#) or the [MBB-S](#) installation instruction for full details.

# Installation instruction

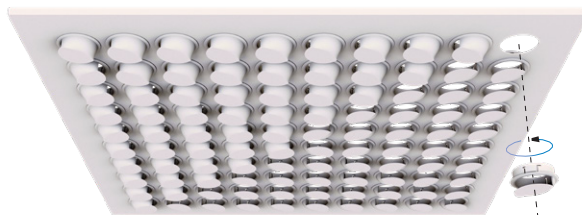
# NQ19


## Air patterns - Individually adjustable nozzles

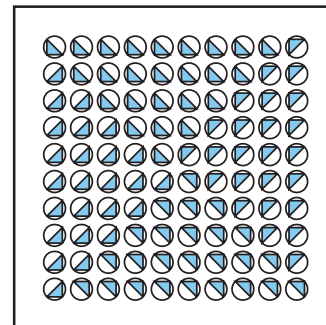
As an example the NQ19-315 faceplate with 100 nozzles are shown below with different air patterns. The diffuser is supplied as standard with nozzles set to a swirl (rotation) pattern.



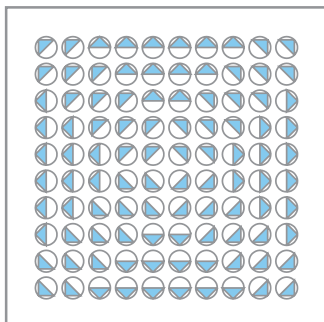
Standard



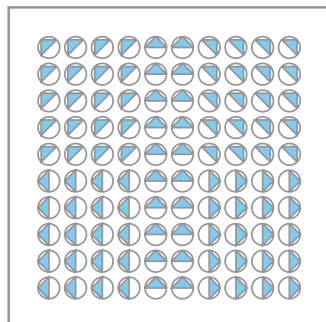
**S**  Swirl (rotation)



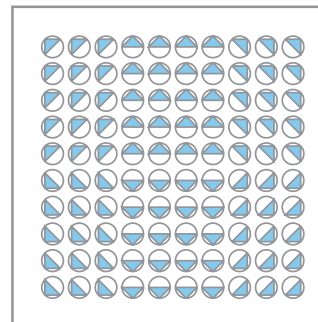
**S**  4-ways




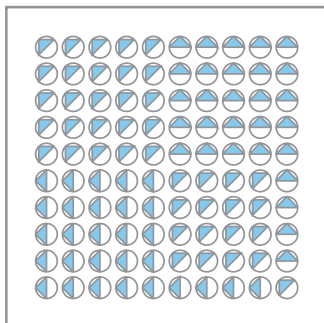
**S**  3-ways



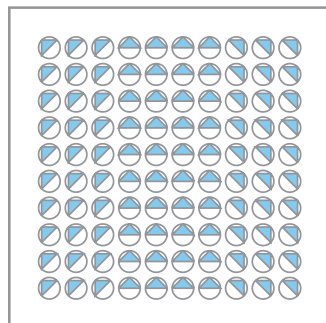
**S**  2-ways



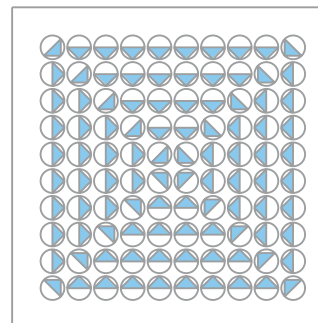
**S**  2-ways (corner)



**S**  1-way



**S**  Vertical







Most of us spend the majority of our time indoors. Indoor climate is crucial to how we feel, how productive we are and if we stay healthy.

We at Lindab have therefore made it our most important objective to contribute to an indoor climate that improves people's lives. We do this by developing energy-efficient ventilation solutions and durable building products. We also aim to contribute to a better climate for our planet by working in a way that is sustainable for both people and the environment.

[Lindab](#) | For a better climate