

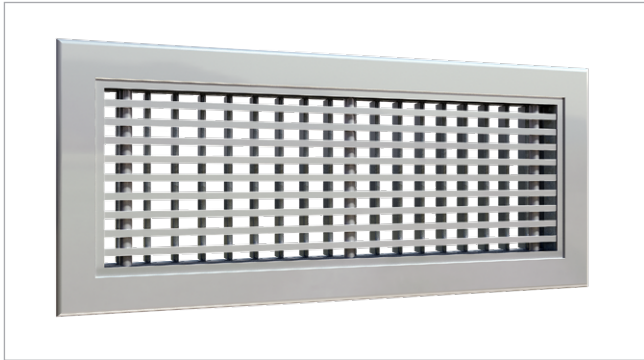
Lindab **AL21CN-M**

Munio outlet front grille



Munio outlet front grille

AL21CN-M



Description

AL21CN-M is a rectangular aluminium grille with fixed horizontal 15° bended bars and additional vertical directional bars for regulation of distribution pattern.

AL21CN-M is used as a outlet front grille for the Munio active chilled beam.

It is supplied as a standard with springs for installation into the Munio telescope extension piece.

For more information please refer to "[Munio - Active Chilled Beam](#)".

Maintenance

The grille can be removed easily to gain access to the Munio plenum. For full maintenance instruction please check [Munio installation instruction](#) on www.lindQST.com.

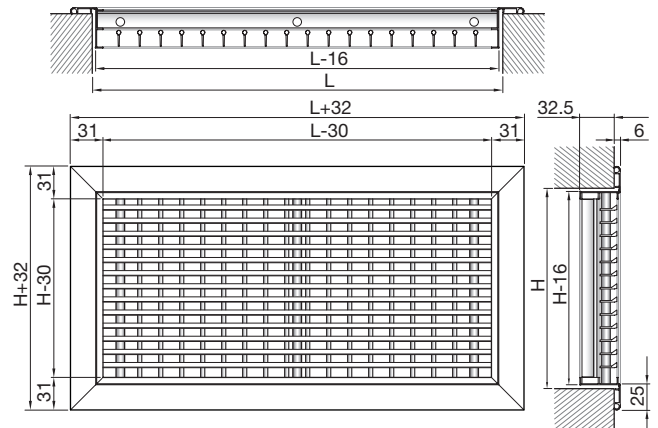
The external parts of the grille should be wiped with a damp cloth.

Order Code

Product:	AL21CN-M -aaaa-100-cccc
Type: AL21CN-M	
L - measure mm: 800, 1000, 1200, 1400	
H - measure mm: 100	
Grille standard finish: ---- = Anodized aluminium 9010 = RAL 9010, Gloss 30 9003 = RAL 9003, Gloss 30 xxxx = On request, other RAL-colour	

Example: AL21CN-M-1200-100-9003

Dimensions



L x H mm	Free area A m ²	Weight kg
800 x 100	0.048	1.0
1000 x 100	0.060	1.4
1200 x 100	0.073	1.6
1400 x 100	0.085	1.9

Materials and finish

Grille: Aluminium
Standard finish: RAL 9003 or RAL 9010.

The grille is available in natural anodised finish and in other colours. Please contact Lindab's sales department for further information.