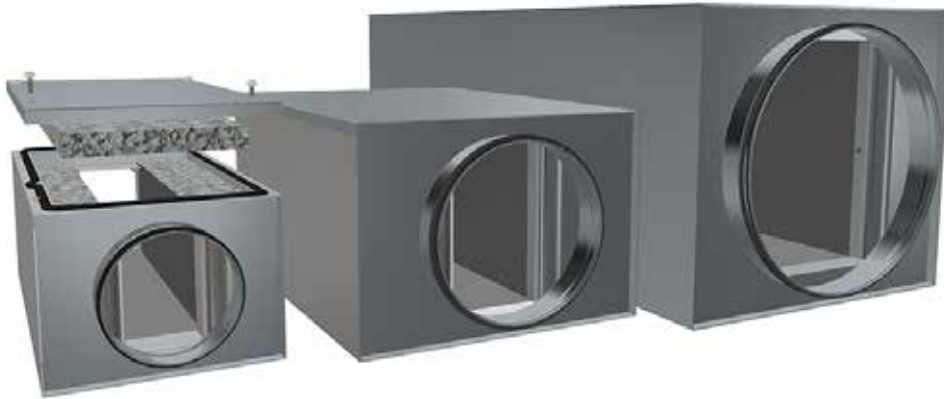


# Circular straight low-built silencer KVAPL



## Description

KVAPL is a rectangular attenuator with circular connections and a low installation height.

Attenuation material is mineral wool covered with textile to prevent fibres of coming out. The KVAPL's are made from galvanized steel sheet.

The attenuator can be cleaned by rotating nylon brushes, vacuum cleaner or damp cloth. With the openable models there are possibilities to replace the acoustic infill.

Fulfils tightness class C.

Tested according to ISO 7235 standard.

For special requirements such as material, perforated sheet on top of the attenuation material, sizes and flanges - this can be made on request. Please contact Lindab sales.

## Model description

The KVAPL comes in two different designs.

- 3.= Attenuator with mineral wool attenuation material.
- 4.= Openable Attenuator with mineral wool attenuation material.

## Model overview

Model	Mineral wool	Openable	Replaceable acoustic infill
3	x		
4	x	x	x

## Technical data

To select the appropriate attenuator and optimize connection size and length to achieve the best performance please use our online tool **LindQST**.

[KVAPL on LindQST >>](#)

## Order code

Product	KVAPL	200	1000	3
KVAPL				
<b>Connection (d), in mm (<math>\varnothing d_{1\text{ nom}}</math>)</b>				
100 – 800				
<b>Length (l), in mm (<math>l_{\text{nom}}</math>)</b>				
300, 600 and 1000 mm ( $\varnothing 100 - 200$ mm)				
600 and 1000 mm ( $\varnothing 250 - 315$ mm)				
600, 1000 and 1250 mm ( $\varnothing 400 - 800$ mm)				
<b>Model (m)</b>				
3, 4				

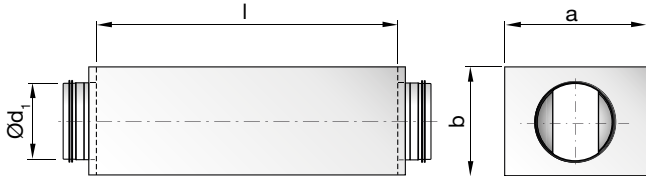
Example: KVAPL - 200 - 1000 - 3



# Circular straight low-built silencer KVAPL

## Dimensions and sound data

### KVAPL model 3 & 4



Ød <sub>1</sub> [nom]	l [mm]	a x b [mm] [mm]		Insertion loss [dB] for centre frequency [Hz]								Model	
				63	125	250	500	1k	2k	4k	8k	3 [kg]	4 [kg]
100	300	252	154	7	9	12	20	23	23	20	12	2,3	2,5
100	600	252	154	9	15	19	38	50	50	49	28	3,8	4,0
100	1000	252	154	14	22	28	47	50	50	50	42	5,8	6,1
125	300	263	177	5	9	11	16	19	19	15	9	2,7	2,8
125	600	263	177	8	13	18	34	44	47	41	24	4,2	4,5
125	1000	263	177	11	21	28	46	50	50	50	41	6,3	6,7
160	300	280	212	4	6	10	14	16	16	11	8	3,1	3,2
160	600	280	212	10	9	17	28	36	41	28	19	4,8	5,0
160	1000	280	212	13	15	27	38	50	50	47	29	7,2	7,3
200	300	361	253	4	4	9	10	14	13	10	8	3,9	4,1
200	600	361	253	8	9	17	20	31	31	20	14	6,3	6,6
200	1000	361	253	14	12	27	36	50	50	32	20	9,4	9,9
250	600	431	303	7	7	13	16	26	22	16	13	8,9	9,2
250	1000	431	303	13	10	21	27	43	37	24	18	13,0	13,5
315	600	458	368	6	5	11	14	22	18	10	10	10,3	10,9
315	1000	458	368	11	7	18	25	38	29	17	13	14,6	15,5
400	600	518	453	5	5	9	13	14	10	8	8	15,9	16,7
400	1000	518	453	6	7	15	21	26	16	10	10	19,4	20,7
400	1250	518	453	7	9	18	25	32	19	12	13	26,0	28,9
500	600	702	555	4	5	7	12	12	8	7	7	21,8	22,7
500	1000	702	555	5	7	11	18	21	12	9	9	31,2	32,8
500	1250	702	555	6	9	13	23	26	14	10	11	36,4	38,2
630	600	751	685	4	5	6	11	10	7	6	6	25,3	26,4
630	1000	751	685	5	6	12	19	15	8	7	8	37,6	41,0
630	1250	751	685	6	9	12	21	20	11	9	10	48,4	50,7
800	600	922	856	3	5	6	10	8	5	4	3	41,1	41,6
800	1000	922	856	3	8	8	14	11	7	6	5	58,0	58,9
800	1250	922	856	5	8	10	18	14	8	7	7	66,5	67,6

