

Shut-off damper with motor shelf

DTHU



Description

Shut-off damper with a pre-assembled motor shelf

The damper consists of a DTU damper with a pre-assembled motor shelf.

It is designed to have a motor added on site.

The damper is equipped with a long damper shaft to be prepared to fit different types of motors, it has no knob for manual adjustment of the damper blade.

There is a separate assembly, measurement, balancing and maintenance instructions for this product.

Ø 80–315 fulfils pressure class C in closed position.

Ø 355–630 fulfils pressure class B in closed position.

Ø 710–1000 fulfils pressure class A in closed position.

Motorizing

Important when choosing the motor is that it has enough torque to open and close the damper blade, see minimum needed torque in the table (M Nm).

On dimensions Ø 80–630 the motor shelf is provided with suitable fixing holes for Belimo's LM, NM, SM, NF and AF motors.

On dimensions Ø 710–1000 the motor shelf is prepared for Belimo's GM motors, dimensions Ø 900 and 1000 has two motors shelves because they need two motors to have enough torque.

The dimensions Ø 710 and 800 can also Belimo's EF motor be used.

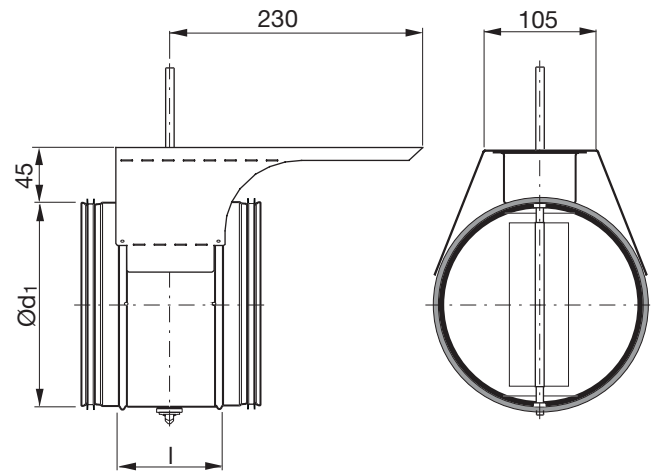
The dampers DRU and DSU can also be ordered with pre-assembled motor shelf.

Ordering example

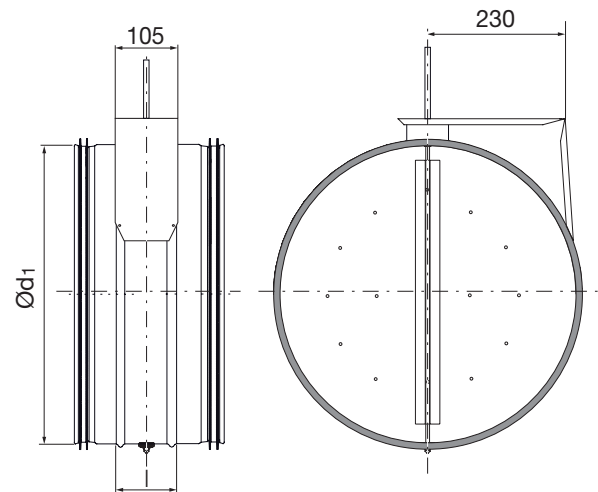
Product	DTHU	200
Dimension Ød ₁		

Dimensions

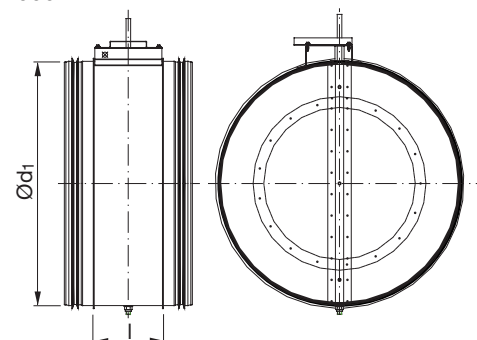
Ø 80–450



Ø 500–630



Ø 710–1000



Shut-off damper with motor shelf

DTHU

Dimensions

Ød ₁ nom	l [mm]	M Nm	m [kg]	Sealing class past closed blade	Shaft dimension mm
80	100	2,0	0,67	4	8 x 8
100	100	2,0	0,75	4	8 x 8
112	100	2,0	0,85	4	8 x 8
125	100	2,0	0,90	4	8 x 8
140	100	2,0	0,97	4	8 x 8
150	100	2,0	1,00	4	8 x 8
160	100	2,0	1,11	4	8 x 8
180	100	2,0	1,19	4	8 x 8
200	100	2,0	1,41	4	8 x 8
224	100	3,0	1,64	4	8 x 8
250	100	3,0	1,89	4	8 x 8
280	100	4,0	2,14	4	8 x 8
300	100	4,0	2,33	4	8 x 8
315	100	4,0	2,51	4	8 x 8
355	100	8,0	2,81	4	8 x 8
400	100	8,0	4,02	4	8 x 8
450	100	10	5,21	4	8 x 8
500	115	10	6,44	4	8 x 8
560	115	15	7,84	4	8 x 8
600	115	15	8,48	4	8 x 8
630	115	15	9,17	4	8 x 8
710	230	30	18,5	4	21 x 21
800	230	30	20,7	4	21 x 21
900	230	60	25,4	4	21 x 21
1000	230	60	32,6	4	21 x 21

Technical data

For technical data go to [LindQST](#).

