

Accessories

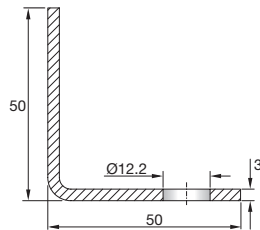
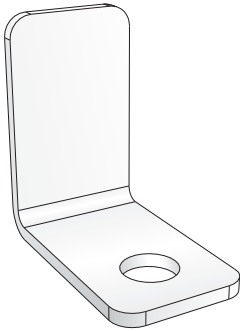
LCRZ

Mounting brackets

LCR-1 and LCR-2 can be secured during construction using a 6 or 8 mm threaded bolt and suspension brackets LCRZ-1 or LCRZ-2, which are available as accessories.

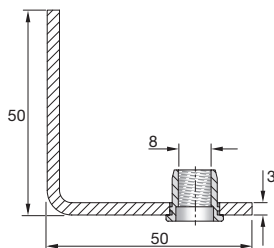
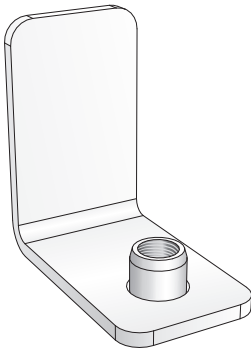
LCRZ-1

- mounting bracket with Ø12 mm smooth hole (in stainless steel).



LCRZ-2

- mounting bracket with 8 mm thread (in stainless steel).



Mounting

LCR-3 and LCR-4 can be installed to advantage using the traditional wire mountings that are used when installing ceiling rails. Wire mountings can be supplied on order stating the desired length.

Order code

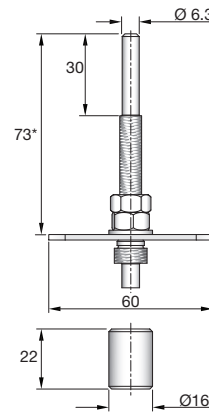
Product	LCRZ	a
Type		
Accessories (1-7)		

Pressure outlet for ceiling and wall

LCRZ-6

Pressure connection for ceiling mounting which is used for registration of pressure before filter in the diffuser. It is connected via a plastic hose to an outlet in the diffuser box. Pressure loss above the filter can then be found in the ventilated room. LCRZ-6 comes standard painted RAL 9010.

- Upon request, LCRZ-6 can be delivered in other lengths, (for example adapted to cleanroom elements), and can also be delivered as a double measuring connection with 2 outlets.



LCRZ-7

Pressure connection for wall or ceiling mounting which is used in connection with room-pressure regulation. It is connected via a plastic hose to a room-pressure regulator and the common reference (Pressure neutral). LCRZ-7 comes standard painted RAL 9010.

- Upon request, LCRZ-7 comes with thread in full length.

