

Lindab **Circular Silencers**

Installation and maintenance instructions



Circular Silencers

Content

Installation.....	3
Mounting of silencers.....	3
Fire insulation of silencers	4
Cleaning and maintenance of silencers	4

Eurovent certification

Lindab's circular duct system with rubber gasket connections Lindab Safe and Lindab Safe Click is certified to strength and leakage in tightness class D according to the Eurovent Certified Performance program for circular metallic ducts systems (DUCT-MC 17.11.002).



Lindab products that are Eurovent certified have the Eurovent logotype in the footer of the technical documentation. Note: Most Lindab Safe and Lindab Safe Click and the most commonly used product in a ventilation system are essentially better than class D, however some products are according to EN 15727 not class D as a single product. These products are stated in the documentation as Class C and can be used in D class systems to a limited extension.

Circular Silencers

Important!

In order to fulfil the requirements for air tightness class D, the silencers must be installed according to these instructions.

Installation

To achieve the certified tightness class for these products they should be installed in accordance with our assembly instructions for Lindab Safe Air Duct System.



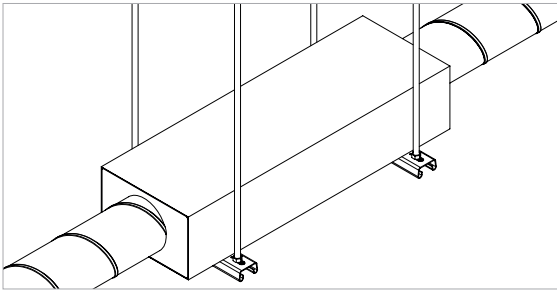
Assembling instructions
Lindab Safe Air Duct System

Mounting

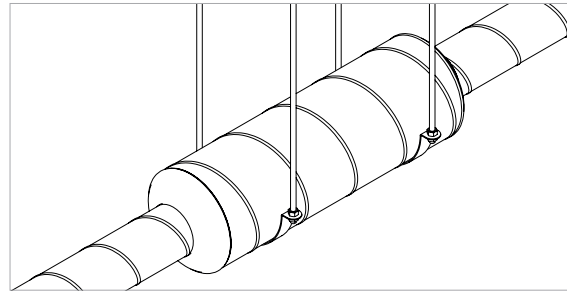
Examples for mounting of the silencers with circular connections.

Support elements type and quantity should be selected according to local regulations and silencer weight to ensure system integrity.

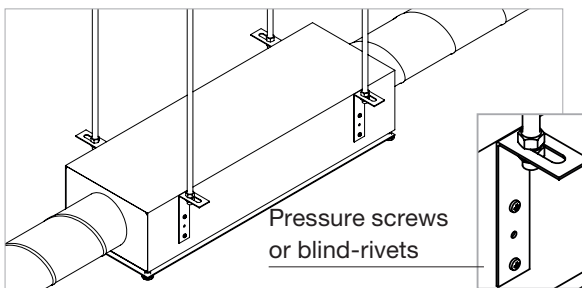
Example 1



Example 2



Example openable silencer

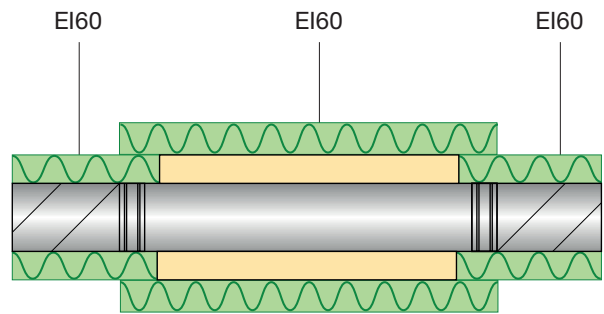


Circular Silencers

Fire insulation of silencer

The silencer should have the same thickness of insulation as the rest of the duct system.

Example:

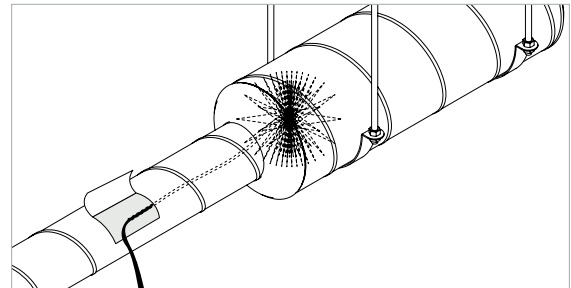


Maintenance

The silencers normally don't require any maintenance. If necessary, the silencer can be cleaned with a soft nylon brush or vacuum cleaner.

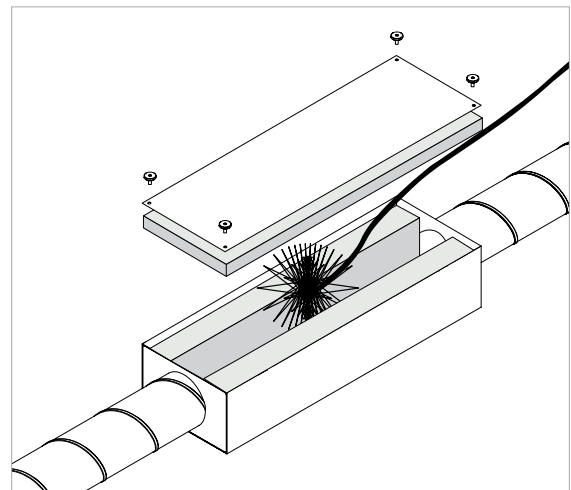
Cleaning of round shaped and low built silencers

Open the nearby access door and clean with a soft nylon brush. If the silencer is equipped with centre splitter or pod, both sides needs to be cleaned.



Cleaning of openabe silencers

- Loosen the screws.
- Be careful not to drop the access door.
- If the attenuator is equipped with centre splitter, loosen the screws. Hold the splitter to prevent it from falling down.
- Clean the attenuator with a soft nylon brush or vacuum cleaner.
- The attenuation material is removable for better cleaning or changing. (If you want to change the material, please contact Lindab Sales).
- When the attenuator is cleaned, place the attenuation material and the splitter back on it's original place.
- Place the access door and tighten the screws.





Most of us spend the majority of our time indoors. Indoor climate is crucial to how we feel, how productive we are and if we stay healthy.

We at Lindab have therefore made it our most important objective to contribute to an indoor climate that improves people's lives. We do this by developing energy-efficient ventilation solutions and durable building products. We also aim to contribute to a better climate for our planet by working in a way that is sustainable for both people and the environment.

[Lindab](#) | For a better climate