



CAPELLA PODIUM

Installation instruction
Installationsvejledning
Montageanvisning
Asennusohje
Montageanleitung
Istruzioni di montaggio
Instruction de montage





Capella & Podium

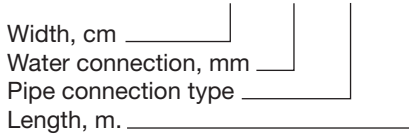
Delivery control

Control the delivery!



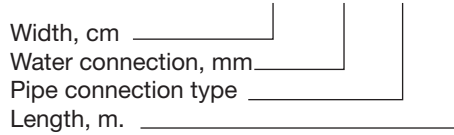
Example of delivery code:

Capella - 17 - 10 - 1 - 3.0 m



Example of delivery code:

Podium - 17 - 100 - 1 - 3.0 m



Plus function: Hygiene hood (only 60).

Accessories: Damper, connection cover, Regula.

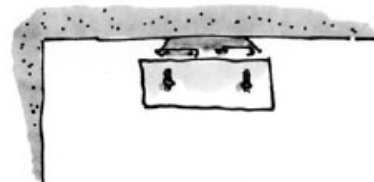
Width	Included mounting details
17	2 scissors 2 screw nuts 2 angle brackets
35/53	4 scissors 4 screw nuts 2 angle brackets
60	4 scissors 4 screw nuts 4 angle brackets

There are also included support sleeves for every pipe connection.

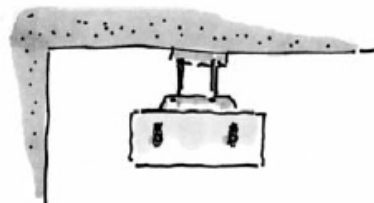
View

Capella and Podium could be mounted with the angle brackets direct against the concrete or hanging in pendulums.

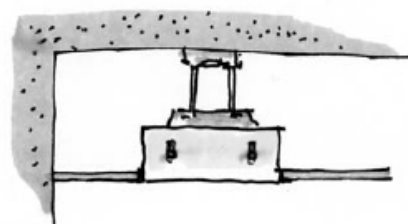
Angle brackets against the concrete



In pendulums



Integrated into false ceilings



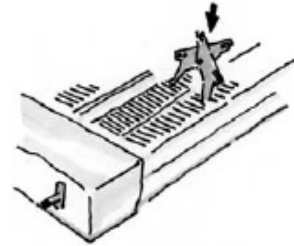


Capella & Podium

Mounting

1.- Place the mounting bracket on the beam, 300-600 mm from the end gable.

OBS! On Podium must the bracket be placed $>0.2xL$ from that end gable which do not have the air duct.

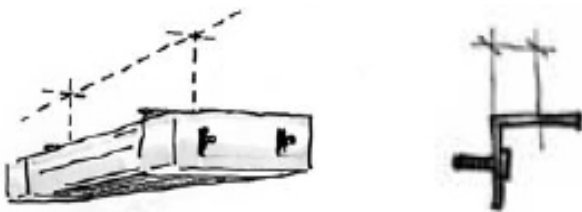


Measure the distance between the scissors

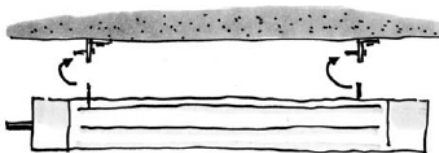
2.- Measure the distance between the scissors.
 (Length 1.2 - 4.0 = 2 brackets)
 (Length 4.1 - 6.0 = 3 brackets)



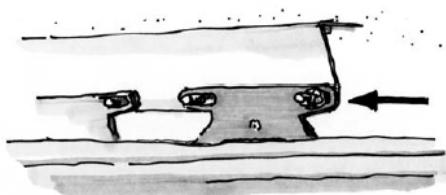
3.- Measure and drill into the ceiling for the angle brackets. Think on the dislocation.



4.- Screw up the angle brackets, both in the same direction.
 5.- Hang up the beam on the angle brackets. Fix the beam with the nut screws.

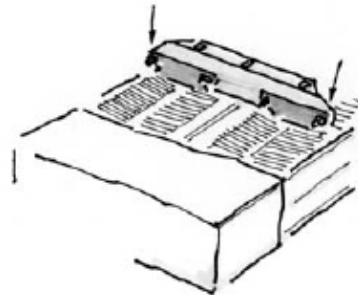


It is enough with screws on the outer bolts.

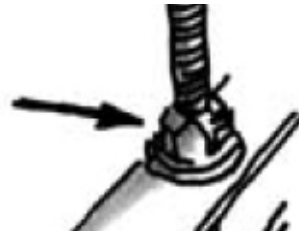


Mounting with pendulums

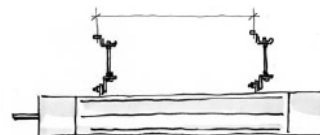
2.- Fasten the angle brackets on the scissors.



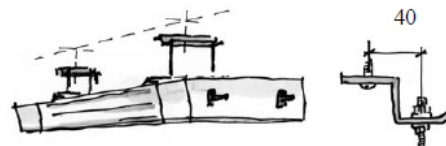
3.- Mount the pendulums (not included) on the angle brackets.



4.- Measure the distance between the pendulums.

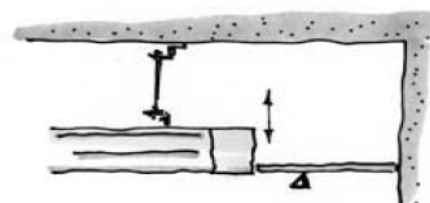


5.- Measure and drill into the ceiling for Z-irons. Think on the dislocation.



6.- Screw up the Z-irons.

7.- Hang up the beam on the Z-irons, adjust the height and tighten the screws.





Capella & Podium

Water connection

Connect water with flexible steel tube or copper pipe. Form the tubes/pipes to an "S" so they easier take up the expansion forces and tolerances.

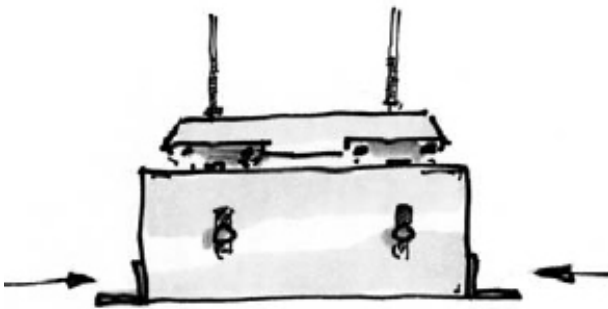


Connect the water with compression couplings or similar. Use the support sleeves. Do not solder!

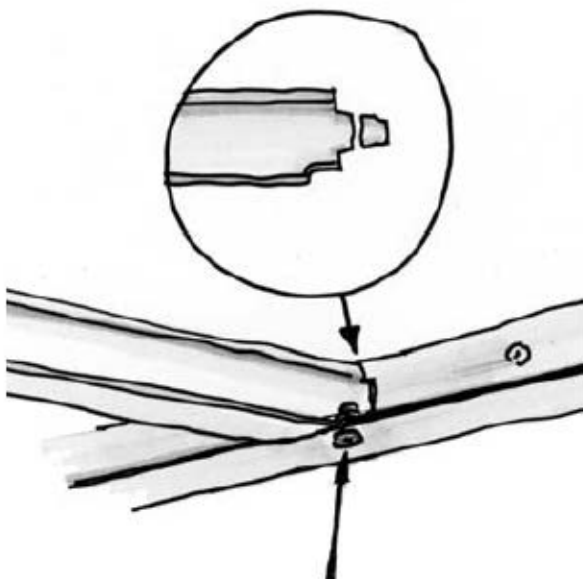
False ceiling adaptation

It is best if the false ceiling installer mount some head profiles before the beams will be mounted. This is to make it easier for the beam installer. If the head profiles already not are mounted is it very important that you use a line/wire to have the beams in the right position.

1. Fix the T-profiles against the beam with pop rivets or screws.

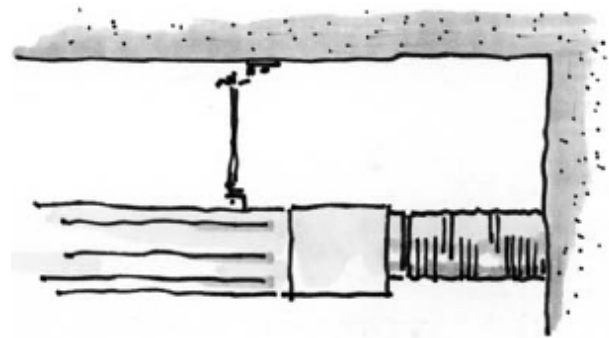


2. Mount the secondary profiles round the beam. Cut off the steering pins and fix with pop rivets.



Ventilation connection (only Podium)

Connect supply air with straight horizontal spirocanal, length > 0.4 m.



Support
Hjælp
Hjälp
Tuotetuki
Unterstützung
Supporto
Support

UK - Here you can find product updates/mounting instructions and support telephone number/mail.

www.lindab.com

Right to alterations reserved.

DK - Her kan du finde seneste produkt opdateringer/ montagevejledninger samt support tlf. nr/mail.

www.lindab.dk

Ret til ændringer forbeholdes.

SE - Här kan du alltid hitta senaste produktuppdateringarna/montageanvisningarna samt support tel. /e-mail.

www.lindab.se

Rätt till ändringar förbehålles.

FI - Täältä löydät uusimmat tuotetiedot ja asennusohjeet sekä tuotetuen yhteystiedot.

www.lindab.fi

Oikeus muutoksiin pidätetään.

DE - Hier finden Sie aktuelle Produktinformationen/ Montageanleitungen und Telefonnummer/ E-Mail-Adressen der Ansprechpartner.

www.lindab.de

Änderungen vorbehalten.

IT - Qui potete trovare istruzioni di montaggio, informazioni sul prodotto ed un supporto tecnico qualificato
Tel. 011 9952099 - e-mail: lindab@lindab.it

www.lindab.it

Soggetto a modifica senza obbligo di preavviso.

FR - Vous trouverez les fiches produits ou de montage actualisées ainsi que les coordonnées du support téléphonique à l'adresse suivante :

www.lindab.fr

Toutes modifications réservées.

Do you have trouble finding your local contacts please go to:

www.lindab.com

CAPELLA/PODIUM-06112013



www.lindab.com