

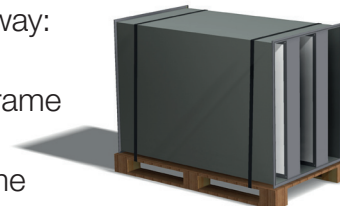


# Packing, transportation and storage instructions for baffle silencers

## Packing:

1. Silencer is positioned on a pallet the following way:

- silencer is vertical and supported by its frame
- baffles are upright
- silencers with access door are in the same position as installed into the ductwork

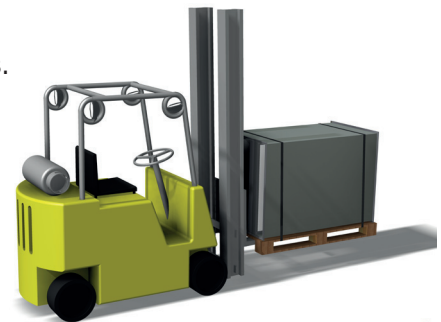


2. Silencer is attached to the pallet with transportation bands.

3. Silencers are covered from dirt and moisture with plastic.

4. Silencers can be stacked on a same pallet the following way:

- largest silencer in the bottom
- support from the frame
- large silencers with access door cannot be stacked

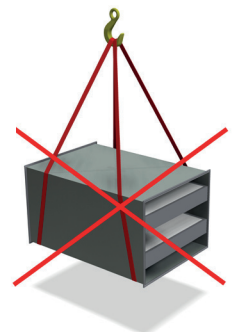
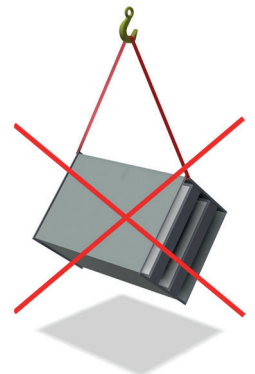


## Transportation:

1. Silencers should be transported in a way that will not damage them.

2. Silencers are lifted on pallet by a fork lift or by lifting from the attached lifting points or around the frame making sure that silencer position stays the same.

3. Heavy loads should not be mounted on top of the silencers during transportation.



## Storage:

1. Silencers should be protected from dirt and moisture by making sure that packaging is not damaged during storage. Especially attenuation material should be protected.

2. Moisture may cause white rust colour formations on the galvanized steel. This only affects the appearance. Corrosion tolerance and other properties of the product won't change.

**Note! Special silencers are supplied with separate instructions.**