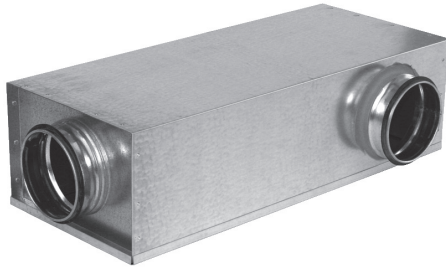


# Circular (Rect.) silencer curved low-built

# KVDP-90K



## Description

Compact angled silencer with good attenuation.

The silencer's measurements makes it suitable for installation above suspended ceilings or where installation space is limited.

The silencer's attenuation material is Acutec® (polyester).

Fullfilts tightness class C.

Tested according to ISO 7235 standard.

To select the appropriate silencer and optimize connection size and length for the best performance you can use our online tool lindQST or our free to download software DIMsilencer.

Special materials and sizes, please contact Lindab sales.

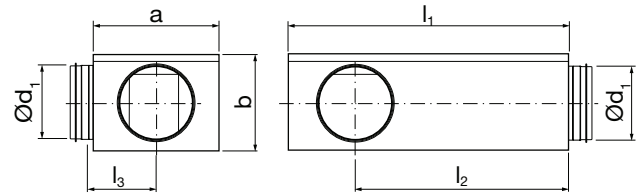
## Order code

|   |                 |          |          |
|---|-----------------|----------|----------|
| <b>Product</b><br>KVDP 90K  | <b>KVDP 90K</b> | <b>d</b> | <b>l</b> |
| <b>Connection dim. Ød<sub>1</sub></b><br>Ød <sub>1</sub> = 100 - 200 mm |                 |          |          |
| <b>Length (l) in mm</b><br>l = 600 - 1000 mm                            |                 |          |          |

Example: KVDP 90K - 160 - 1000



## Dimensions and sound data



| Ød <sub>1</sub> [mm] | l <sub>nom</sub> [mm] | l <sub>1</sub> [mm] | l <sub>2</sub> [mm] | l <sub>3</sub> [mm] | a x b [mm] | m [kg] |
|----------------------|-----------------------|---------------------|---------------------|---------------------|------------|--------|
| 100                  | 600                   | 626                 | 508                 | 142                 | 252 154    | 4,4    |
| 100                  | 1000                  | 1036                | 918                 | 142                 | 252 154    | 6,4    |
| 125                  | 600                   | 626                 | 496                 | 149                 | 263 177    | 4,6    |
| 125                  | 1000                  | 1036                | 906                 | 149                 | 263 177    | 7,5    |
| 160                  | 600                   | 626                 | 478                 | 156                 | 280 212    | 5,2    |
| 160                  | 1000                  | 1036                | 888                 | 156                 | 280 212    | 7,5    |
| 200                  | 600                   | 626                 | 458                 | 202                 | 361 253    | 6,8    |
| 200                  | 1000                  | 1036                | 868                 | 202                 | 361 253    | 9,6    |

## Sound attenuation

| Ød <sub>1</sub> [mm] | l [mm] | Insertion loss [dB] for centre frequency [Hz] |     |     |     |    |    |    |    |
|----------------------|--------|---|-----|-----|-----|----|----|----|----|
|                      |        | 63  | 125 | 250 | 500 | 1k | 2k | 4k | 8k |
| 100                  | 600    | 11  | 12  | 13  | 21  | 34 | 32 | 27 | 30 |
| 100                  | 1000   | 13  | 14  | 17  | 25  | 38 | 45 | 46 | 44 |
| 125                  | 600    | 10  | 10  | 11  | 21  | 28 | 21 | 21 | 23 |
| 125                  | 1000   | 13  | 12  | 15  | 26  | 35 | 31 | 27 | 29 |
| 160                  | 600    | 8   | 8   | 10  | 21  | 21 | 18 | 20 | 21 |
| 160                  | 1000   | 14  | 11  | 15  | 27  | 34 | 30 | 30 | 31 |
| 200                  | 600    | 7   | 6   | 10  | 23  | 21 | 20 | 21 | 25 |
| 200                  | 1000   | 10  | 9   | 14  | 27  | 34 | 34 | 30 | 33 |

## K<sub>Woct</sub> correction

| Ød <sub>1</sub> [mm] | Correction, K <sub>Woct</sub> (dB) for centre frequency [Hz] |          |          |          |          |          |          |          |
|----------------------|--|----------|----------|----------|----------|----------|----------|----------|
|                      | 63   | 125      | 250      | 500      | 1k       | 2k       | 4k       | 8k       |
| 100                  | 8  | 9        | 6        | 3        | -6       | -15      | -23      | -36      |
| 125                  | 11   | 10       | 6        | 1        | -7       | -13      | -22      | -34      |
| 160                  | 12   | 8        | 6        | 2        | -8       | -15      | -26      | -38      |
| 200                  | 17   | 10       | 6        | 0        | -9       | -16      | -25      | -37      |
| <b>Tol.+/-</b>       | <b>3</b>   | <b>3</b> | <b>2</b> | <b>3</b> | <b>3</b> | <b>3</b> | <b>3</b> | <b>3</b> |

Sound power levels per octave band L<sub>Woct</sub> are calculated by adding the octave band corrections K<sub>Woct</sub> to the total power level L<sub>WA</sub> from the graphs.

$$L_{Woct} = L_{WA} + K_{oct}$$

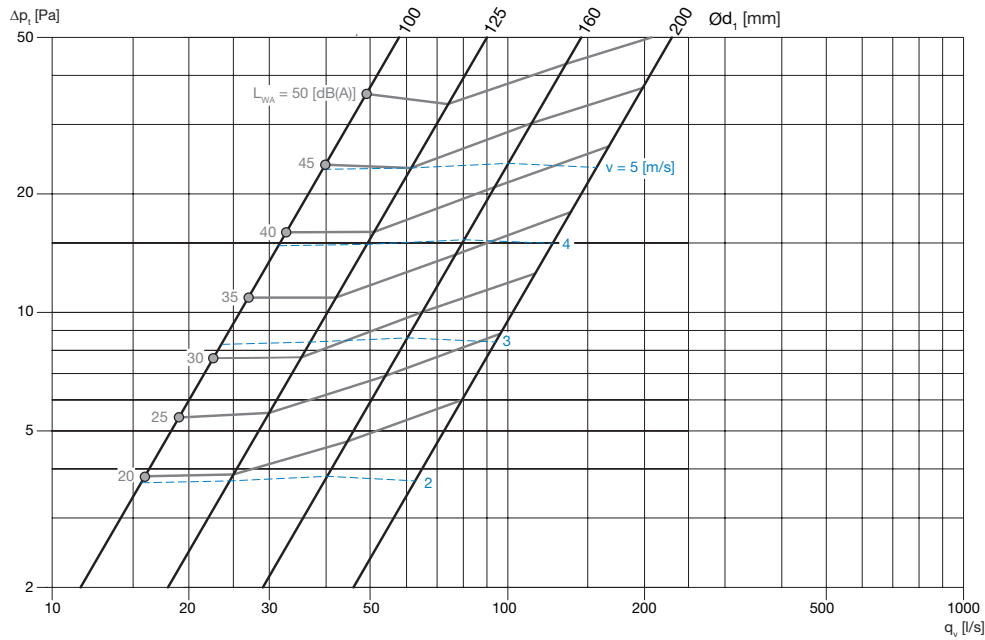
# Circular (Rect.) silencer curved low-built

# KVDP-90K

## Technical data

Pressure loss  $\Delta p_t$

$l = 600 \text{ mm}$



$l = 1000 \text{ mm}$

