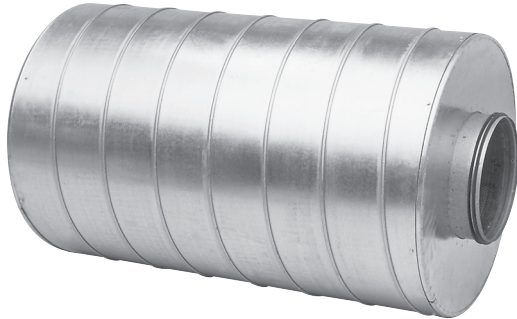


# Circular straight silencer

# SLGU



## Description

SLGU is a circular straight silencer

Nominal insulation thicknesses are 100 mm or 150 mm. Attenuation material is mineral wool. The SLGU's are made of strong outer spiral seemed tube and an inner tube made of steel with small openings to be able to withstand mechanical cleaning and at the same time not interfere with the insertion loss. The space between them is filled with mineral wool and a nonwoven cloth is inserted between inner tube and the attenuation material, to prevent fibres from the insulation getting into the duct system. Silencer can be cleaned by rotating nylon brushes, vacuum cleaner or damp cloth.

Tested according to ISO 7235 standard.

Special materials, sizes and flanges on request. Please contact Lindab sales.

To select the appropriate silencer and optimize connection size and length for the best performance you can use our online tool LindQST or our free to download software DIMsilencer.

## Order code

| Product   | SLGU | d | l | t |
|---|------|---|---|---|
| SLGU  |      |   |   |   |
| <b>Connection (d) in mm (<math>\varnothing d_{1nom}</math>)</b> |      |   |   |   |
| 80 - 800 mm (100 mm insulation)                                 |      |   |   |   |
| 80 - 250 mm (150 mm insulation)                                 |      |   |   |   |
| <b>Length (l) in mm (<math>l_{nom}</math>)</b>                  |      |   |   |   |
| 300 - 1500 mm (100 mm insulation)                               |      |   |   |   |
| 900 - 1200 mm (150 mm insulation)                               |      |   |   |   |
| <b>Insulation thickness (t) in mm</b>                           |      |   |   |   |
| 100 or 150 mm   |      |   |   |   |

Example: SLGU - 200 - 900 - 100



### Fire classes (According to Swedish regulations) for SLGU 100.

Fire classes without protective distance: EI 15, E 60.

With protective distance to:

- evacuation person: 2,5 kW/m<sup>2</sup>:  
 EI 60 at distance 50 mm ( $\varnothing \leq 400$ ).  
 EI 30 at distance 50 mm ( $\varnothing \leq 800$ )  
 EI 60 at distance 500 mm ( $\varnothing > 400 - 800$ )
- combustible materials: 10 kW/m<sup>2</sup> EI 60 at distance 50 mm

### Fire classes (According to Swedish regulations) for SLGU 150.

Fire classes without protective distance: EI 30, E 60.

With protective distance to:

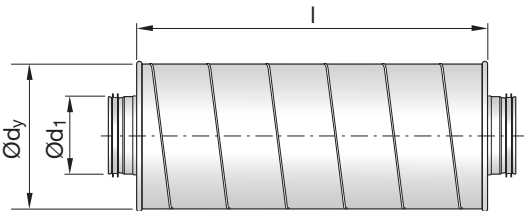
- evacuation person: 2,5 kW/m<sup>2</sup>:  
 EI 60 at distance 50 mm ( $\varnothing \leq 400$ )  
 EI 60 at distance 500 mm ( $\varnothing > 400 - 800$ )
- combustible materials: 10 kW/m<sup>2</sup> EI 60 at distance 50 mm

# Circular straight silencer

SLGU

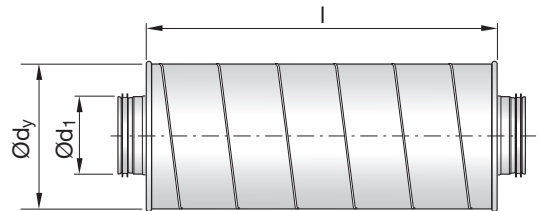
## Technical data for silencer with 100 and 150 mm insulation

Dimensions and sound data for silencer with 100 mm insulation.



| Ød <sub>1</sub> nom | l mm | Attenuation [dB] for centre frequency [Hz] |     |     |     |    |    |    |    | ØD mm | m kg |
|---------------------|------|--|-----|-----|-----|----|----|----|----|-------|------|
|                     |      | 63   | 125 | 250 | 500 | 1k | 2k | 4k | 8k |       |      |
| 80                  | 300  | 4  | 8   | 11  | 17  | 25 | 30 | 28 | 15 | 295   | 3,00 |
| 80                  | 600  | 6  | 15  | 23  | 34  | 50 | 50 | 50 | 25 | 295   | 5,30 |
| 80                  | 900  | 9  | 22  | 35  | 50  | 50 | 50 | 50 | 36 | 295   | 7,60 |
| 100                 | 300  | 2  | 7   | 10  | 15  | 20 | 25 | 21 | 13 | 310   | 3,40 |
| 100                 | 600  | 4  | 13  | 20  | 28  | 40 | 49 | 36 | 20 | 310   | 6,10 |
| 100                 | 900  | 7  | 20  | 30  | 41  | 50 | 50 | 50 | 27 | 310   | 8,80 |
| 125                 | 300  | 1  | 7   | 9   | 16  | 19 | 19 | 15 | 10 | 325   | 3,20 |
| 125                 | 600  | 3  | 11  | 17  | 26  | 38 | 38 | 25 | 15 | 325   | 5,90 |
| 125                 | 900  | 4  | 15  | 25  | 36  | 50 | 50 | 35 | 20 | 325   | 8,50 |
| 125                 | 1200 | 6  | 19  | 33  | 46  | 50 | 50 | 45 | 25 | 325   | 11,2 |
| 160                 | 300  | 1  | 6   | 9   | 14  | 16 | 14 | 10 | 7  | 365   | 4,20 |
| 160                 | 600  | 3  | 8   | 15  | 23  | 29 | 29 | 17 | 11 | 365   | 7,50 |
| 160                 | 900  | 4  | 11  | 21  | 32  | 43 | 44 | 25 | 14 | 365   | 10,7 |
| 160                 | 1200 | 5  | 14  | 27  | 41  | 50 | 50 | 32 | 18 | 365   | 14,0 |
| 200                 | 600  | 3  | 7   | 14  | 21  | 24 | 21 | 12 | 9  | 410   | 10,6 |
| 200                 | 900  | 5  | 10  | 20  | 33  | 38 | 30 | 16 | 11 | 410   | 15,3 |
| 200                 | 1200 | 6  | 12  | 26  | 45  | 50 | 40 | 20 | 13 | 410   | 20,0 |
| 250                 | 600  | 3  | 5   | 11  | 17  | 19 | 15 | 8  | 7  | 465   | 12,2 |
| 250                 | 900  | 4  | 8   | 17  | 27  | 30 | 21 | 11 | 9  | 465   | 17,7 |
| 250                 | 1200 | 5  | 10  | 23  | 37  | 41 | 26 | 14 | 11 | 465   | 23,2 |
| 315                 | 600  | 2  | 5   | 9   | 17  | 16 | 9  | 6  | 6  | 510   | 15,7 |
| 315                 | 900  | 3  | 6   | 14  | 23  | 24 | 13 | 8  | 8  | 510   | 23,0 |
| 315                 | 1200 | 4  | 8   | 18  | 29  | 32 | 17 | 10 | 11 | 510   | 30,1 |
| 400                 | 900  | 4  | 5   | 10  | 11  | 14 | 7  | 6  | 8  | 615   | 27,4 |
| 400                 | 1200 | 5  | 6   | 13  | 16  | 17 | 9  | 7  | 9  | 615   | 35,9 |
| 400                 | 1500 | 5  | 8   | 15  | 20  | 20 | 11 | 8  | 11 | 615   | 44,3 |
| 500                 | 900  | 3  | 5   | 10  | 11  | 9  | 5  | 6  | 7  | 735   | 31,4 |
| 500                 | 1200 | 3  | 6   | 14  | 16  | 13 | 7  | 7  | 9  | 735   | 41,0 |
| 500                 | 1500 | 4  | 7   | 17  | 21  | 17 | 9  | 7  | 11 | 735   | 50,6 |
| 630                 | 900  | 3  | 4   | 7   | 8   | 5  | 4  | 4  | 5  | 880   | 39,9 |
| 630                 | 1200 | 3  | 5   | 11  | 12  | 8  | 5  | 5  | 7  | 880   | 51,9 |
| 630                 | 1500 | 3  | 6   | 14  | 16  | 11 | 6  | 6  | 9  | 880   | 64,0 |
| 800                 | 1200 | 2  | 3   | 9   | 8   | 5  | 4  | 5  | 5  | 1030  | 68,7 |
| 800                 | 1500 | 2  | 4   | 11  | 12  | 6  | 5  | 6  | 6  | 1030  | 84,7 |

Dimensions and sound data for silencer with 150 mm insulation.



| Ød <sub>1</sub> nom [mm] | l nom [mm] | Insertion loss [dB] for centre frequency [Hz] |     |     |     |    |    |    |    | Ød <sub>y</sub> [mm] | m [kg] |
|--------------------------|------------|---|-----|-----|-----|----|----|----|----|----------------------|--------|
|                          |            | 63  | 125 | 250 | 500 | 1k | 2k | 4k | 8k |                      |        |
| 80                       | 900        | 15  | 30  | 41  | 50  | 50 | 50 | 50 | 34 | 410                  | 13,6   |
| 80                       | 1000       | 15  | 30  | 41  | 50  | 50 | 50 | 50 | 34 | 410                  | 13,6   |
| 100                      | 900        | 10  | 26  | 36  | 48  | 50 | 50 | 48 | 26 | 410                  | 14,1   |
| 100                      | 1000       | 10  | 26  | 36  | 48  | 50 | 50 | 48 | 26 | 410                  | 14,1   |
| 125                      | 900        | 8   | 20  | 31  | 45  | 49 | 49 | 36 | 19 | 465                  | 15,9   |
| 125                      | 1000       | 8   | 20  | 31  | 45  | 49 | 49 | 36 | 19 | 465                  | 15,9   |
| 125                      | 1200       | 13  | 30  | 38  | 48  | 50 | 50 | 45 | 24 | 465                  | 20,9   |
| 160                      | 900        | 6   | 15  | 25  | 38  | 48 | 45 | 23 | 14 | 465                  | 16,7   |
| 160                      | 1000       | 6   | 15  | 25  | 38  | 48 | 45 | 23 | 14 | 465                  | 16,7   |
| 160                      | 1200       | 11  | 21  | 31  | 47  | 50 | 50 | 30 | 16 | 465                  | 22,1   |
| 200                      | 900        | 8   | 15  | 23  | 33  | 38 | 30 | 16 | 11 | 510                  | 19,7   |
| 200                      | 1000       | 8   | 15  | 23  | 33  | 38 | 30 | 16 | 11 | 510                  | 19,7   |
| 200                      | 1200       | 10  | 19  | 28  | 43  | 49 | 39 | 21 | 13 | 510                  | 25,9   |
| 250                      | 900        | 8   | 12  | 19  | 27  | 31 | 21 | 11 | 10 | 580                  | 22,6   |
| 250                      | 1000       | 8   | 12  | 19  | 27  | 31 | 21 | 11 | 10 | 580                  | 22,6   |
| 250                      | 1200       | 9   | 15  | 26  | 36  | 41 | 26 | 14 | 11 | 580                  | 29,8   |

