

X-piece

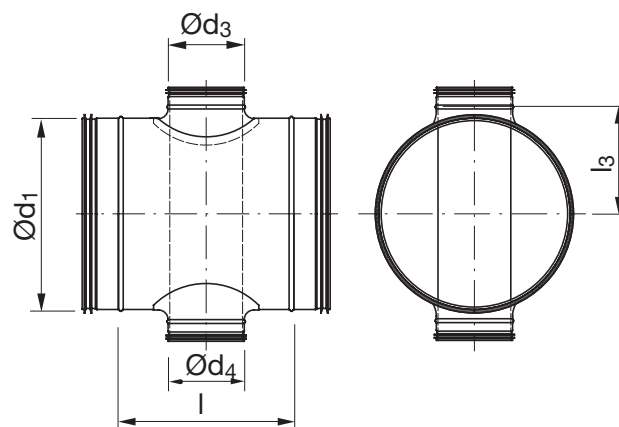
XBPU



Description

X-piece, with bypass function, helping when crossing ventilation ducts when the ceiling height is restricted or when increased ceiling height is desired.

Dimensions



Ød ₁ nom	Ød ₃ /Ød ₄ nom	l [mm]	l ₃ [mm]	m [kg]
100	63	125	60	0,55
125	63	125	73	0,67
125	80	146	75	0,80
160	80	140	92	0,93
160	100	175	95	1,34
200	80	140	112	1,14
200	100	175	115	1,38
200	125	215	115	1,65
250	125	220	145	2,24
250	160	256	150	2,58
315	100	175	173	2,21
315	160	256	182	3,14
315	200	306	182	3,61
400	125	225	220	3,90
400	160	266	225	4,44
400	200	300	225	5,14
400	250	350	225	6,01
500	160	266	275	5,83
500	250	350	275	7,33
500	315	415	275	8,64
630	200	300	340	7,92
630	315	510	340	10,82

Ordering example

Product	XBPU	315	200
Dimension Ød ₁			
Dimension Ød ₃ , Ød ₄			



X-piece

XBPU

Technical data

