

Modular Box Fan

MBF EC

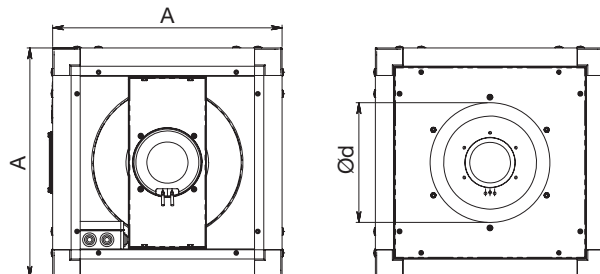
- 1
- 2
- 3
- 4
- 5
- 6
- 7
- 8
- 9
- 10
- 11
- 12
- 13
- 14
- 15
- 16
- 17
- 18



Description

Acoustically insulated duct fans for ventilation and air conditioning systems. Used for the air supply or extract. Not suitable for polluted air, aggressive and explosive gases. Backward curved impellor. External rotor EC motor, direct transmission, high efficiency long-serving bearing with no maintenance requirements. Housing is made of galvanized steel, housing frame made of aluminium profiles, perforated sheet, which reduces noise level in duct systems.

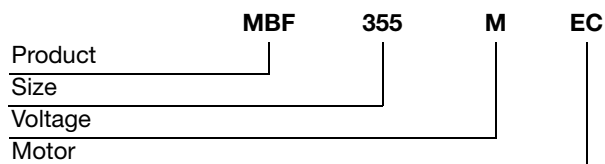
Dimensions



Product	Ød mm	A mm	m kg
MBF355 M EC	261	500	28,0
MBF400/M EC	325	670	50,0
MBF500/T EC	412	670	51,0
MBF560/T EC	461	800	87,0
MBF630/T EC	512	800	73,0

M = 230 volt
T = 400 volt

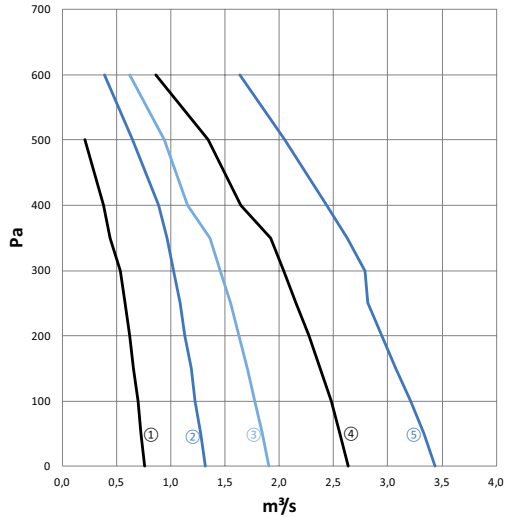
Ordering example



Modular Box Fan

MBF EC

Technical data



Graph Ref.	Product	m³/s @ Pa											Motor	Amps	Speed
		0	50	100	150	200	250	300	350	400	500	600	W	FLC	RPM
1	MBF355/M EC	0,760	0,726	0,694	0,657	0,622	0,580	0,532	0,439	0,379	0,208		0,407	1,93	2010
2	MBF400/M EC	1,314	1,271	1,226	1,184	1,132	1,081	1,023	0,962	0,890	0,645	0,389	0,764	3,46	1700
3	MBF500/T EC	1,906	1,845	1,772	1,705	1,631	1,548	1,459	1,360	1,157	0,937	0,623	1,286	2,04	1400
4	MBF560/T EC	2,638	2,558	2,479	2,379	2,276	2,148	2,038	1,922	1,647	1,340	0,859	1,573	2,45	1230
5	MBF630/T EC	3,438	3,330	3,214	3,076	2,940	2,811	2,789	2,623	2,434	2,047	1,638	2,956	4,55	1230

Graph Ref.	Product	Sound Power Level (Breakout)							dB(A)
		125	250	500	1K	2K	4K	8K	@ 3m
1	MBF355/M EC	38	47	51	50	47	42	39	56
2	MBF400/M EC	45	51	56	54	49	47	45	60
3	MBF500/T EC	48	57	57	55	52	50	49	62
4	MBF560/T EC	56	62	62	60	59	56	54	68
5	MBF630/T EC	58	67	67	66	64	59	57	73

