



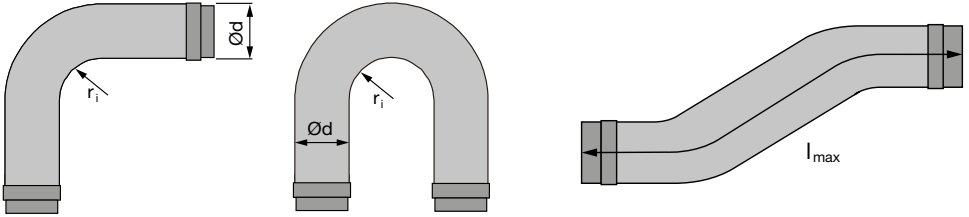
# Lindab **Flexible duct**

## **DRATU, DRATMF, DRATMFU**

Assembly instructions

# Properties

The ducts are available in three lengths 500, 1000 and 1500 mm.  $r_i$  describes the minimum inner radius.  $l_{max}$  is measured as the center line of flexible duct.



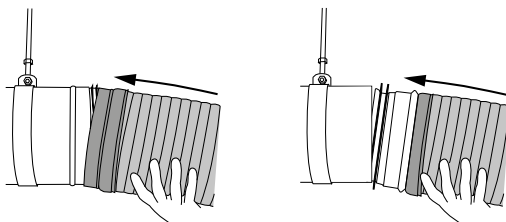
| Ød<br>nom | DRATU                  | DRATMF                 | DRATMFU                | l <sub>max</sub><br>mm | r <sub>i</sub><br>mm |
|-----------|------------------------|------------------------|------------------------|------------------------|----------------------|
|           | l <sub>min</sub><br>mm | l <sub>min</sub><br>mm | l <sub>min</sub><br>mm |                        |                      |
| 80        | 170                    | 250                    | 210                    | 500                    | 48                   |
|           | 270                    | 350                    | 310                    | 1000                   |                      |
|           | 460                    | 550                    | 500                    | 1500                   |                      |
| 100       | 170                    | 250                    | 210                    | 500                    | 60                   |
|           | 270                    | 350                    | 310                    | 1000                   |                      |
|           | 460                    | 550                    | 500                    | 1500                   |                      |
| 125       | 170                    | 250                    | 210                    | 500                    | 75                   |
|           | 270                    | 350                    | 310                    | 1000                   |                      |
|           | 460                    | 550                    | 500                    | 1500                   |                      |
| 160       | 170                    | 250                    | 210                    | 500                    | 96                   |
|           | 270                    | 350                    | 310                    | 1000                   |                      |
|           | 460                    | 550                    | 500                    | 1500                   |                      |
| 200       | 170                    | 250                    | 210                    | 500                    | 160                  |
|           | 270                    | 350                    | 310                    | 1000                   |                      |
|           | 460                    | 550                    | 500                    | 1500                   |                      |
| 250       | 180                    | 280                    | 220                    | 500                    | 200                  |
|           | 280                    | 380                    | 320                    | 1000                   |                      |
|           | 460                    | 550                    | 500                    | 1500                   |                      |
| 315       | 180                    | 280                    | 220                    | 500                    | 250                  |
|           | 320                    | 420                    | 360                    | 1000                   |                      |
|           | 460                    | 550                    | 500                    | 1500                   |                      |

# Cleaning

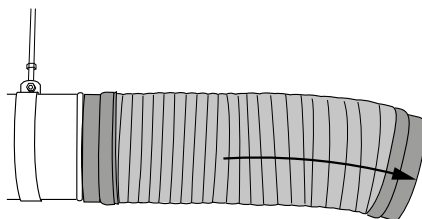
The flexible duct shall be removed at inspection or cleaning. The cleaning shall not be done with mechanical methods. Lindab recommends a sponge with lukewarm water with a mild detergent or to change the duct when necessary.

# Mounting

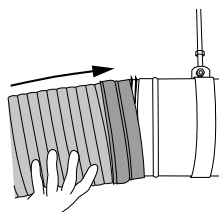
1. Connect to duct or fitting.



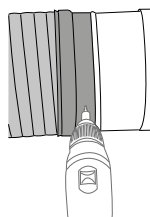
2. Pull the flexible duct



3. Connect to eg. diffuser.



4. Fasten with screw or pop rivet





# Good Thinking

**At Lindab**, good thinking is a philosophy that guides us in everything we do. We have made it our mission to create a healthy indoor climate – and to simplify the construction of sustainable buildings. We do that by designing innovative products and solutions that are easy to use, as well as offering efficient availability and logistics. We are also working on ways to reduce our impact on our environment and climate. We do that by developing methods to produce our solutions using a minimum of energy and natural resources, and by reducing negative effects on the environment. We use steel in our products. It's one of few materials that can be recycled an infinite number of times without losing any of its properties. That means less carbon emissions in nature and less energy wasted.

**We simplify construction**