



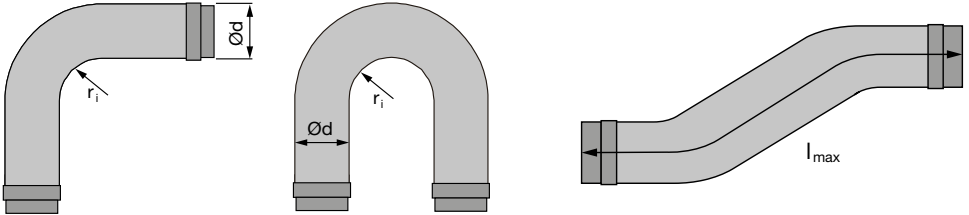
Lindab **Flexible duct**

DRATU, DRATMF, DRATMFU

Assembly instructions

Properties

The ducts are available in three lengths 500, 1000 and 1500 mm. r_i describes the minimum inner radius. l_{max} is measured as the center line of flexible duct.



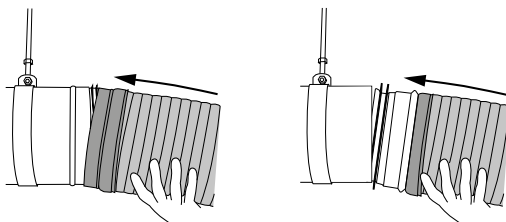
Ød nom	DRATU	DRATMF	DRATMFU	l_{max} mm	r_i mm
	l_{min} mm	l_{min} mm	l_{min} mm		
80	170	250	210	500	48
	270	350	310	1000	
	460	550	500	1500	
100	170	250	210	500	60
	270	350	310	1000	
	460	550	500	1500	
125	170	250	210	500	75
	270	350	310	1000	
	460	550	500	1500	
160	170	250	210	500	96
	270	350	310	1000	
	460	550	500	1500	
200	170	250	210	500	160
	270	350	310	1000	
	460	550	500	1500	
250	180	280	220	500	200
	280	380	320	1000	
	460	550	500	1500	
315	180	280	220	500	250
	320	420	360	1000	
	460	550	500	1500	

Cleaning

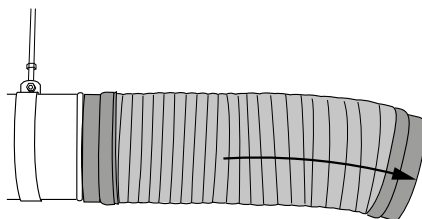
The flexible duct shall be removed at inspection or cleaning. The cleaning shall not be done with mechanical methods. Lindab recommends a sponge with lukewarm water with a mild detergent or to change the duct when necessary.

Mounting

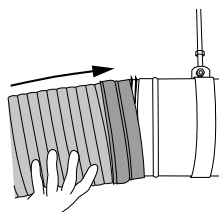
1. Connect to duct or fitting.



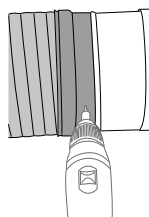
2. Pull the flexible duct



3. Connect to eg. diffuser.



4. Fasten with screw or pop rivet





Good Thinking

At Lindab, good thinking is a philosophy that guides us in everything we do. We have made it our mission to create a healthy indoor climate – and to simplify the construction of sustainable buildings. We do that by designing innovative products and solutions that are easy to use, as well as offering efficient availability and logistics. We are also working on ways to reduce our impact on our environment and climate. We do that by developing methods to produce our solutions using a minimum of energy and natural resources, and by reducing negative effects on the environment. We use steel in our products. It's one of few materials that can be recycled an infinite number of times without losing any of its properties. That means less carbon emissions in nature and less energy wasted.

We simplify construction