



CADvent plugin for Revit Manual - v2.1

Contents

1	General	2
2	Installation and setup	2
3	Prerequisites	4
4	Ribbon Menu.....	5
4.1	Duct Series	5
4.2	Update Model function	8
4.3	lindQST Terminal	8
4.4	lindQST silencer function	9
4.5	Bends to Offset	11
4.6	Link to LindQST project.....	12
4.7	CADvent Properties	16
4.8	Edit Flanges	16
4.9	Manage Ducts	18
4.10	Model Checker	19
4.11	Bill of Materials.....	19
4.12	Webshop Upload.....	23
4.13	TEKNOsim export	28
5	MagiCAD template and Dataset.....	30
5.1	Production Model Updater.....	32
5.2	Split segments function	34



1 General

All features in CADvent plugin works on Revit without any additional application. However, it is also possible to use Duct Series created with MagiCAD for Revit.

2 Installation and setup

You need to download the CADvent plugin for Revit for Revit installation file from:

<http://itsolution.lindab.com/downloads/cadventplugin/latest/CADventPluginSetup.exe>

Double click on the EXE file to start the installation. Please note that you need to have local administrator rights to start the installation. If the User Account Control for Windows is activated on your computer, please click the "Yes" button to proceed with the installation if invoked.

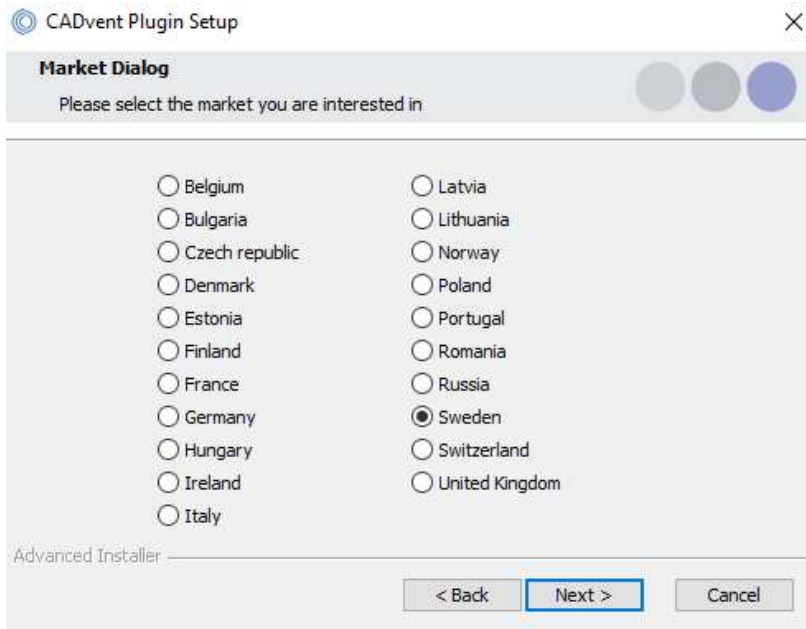
The installation dialog will guide you through the installation process:



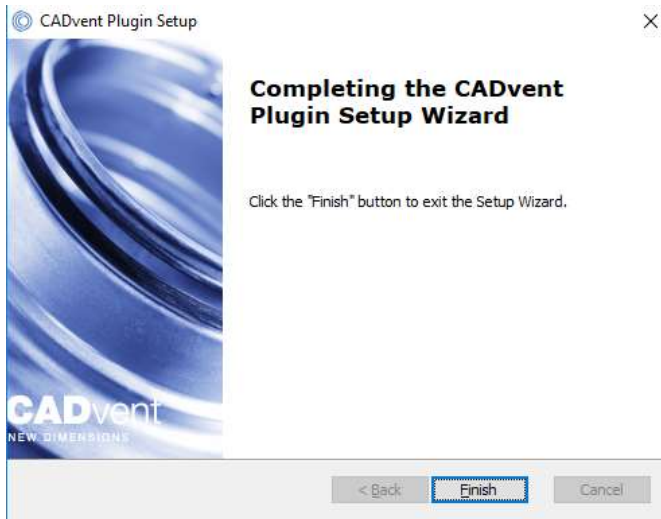
Please read the license agreement carefully. You must accept the agreement to continue with the installation:



Select then the market area you want to be supported in the plug-in:



Push the "Next" button to go to the next dialog where the installation place on your computer is shown and then continue to start the installation. The installation ends with the final dialog that shows the completion of the installation:



Now the setup is completed. The CADvent plugin for Revit requires no separate license.

3 Prerequisites

CADvent plugin runs on Autodesk Revit. All commands to create and manage CADvent Duct Series are included. No other application is required.

To create and use Duct Series with MagiCAD please see the last chapter in this document.

MagiCAD for Revit requires a separate license from www.magicad.com.



4 Ribbon Menu

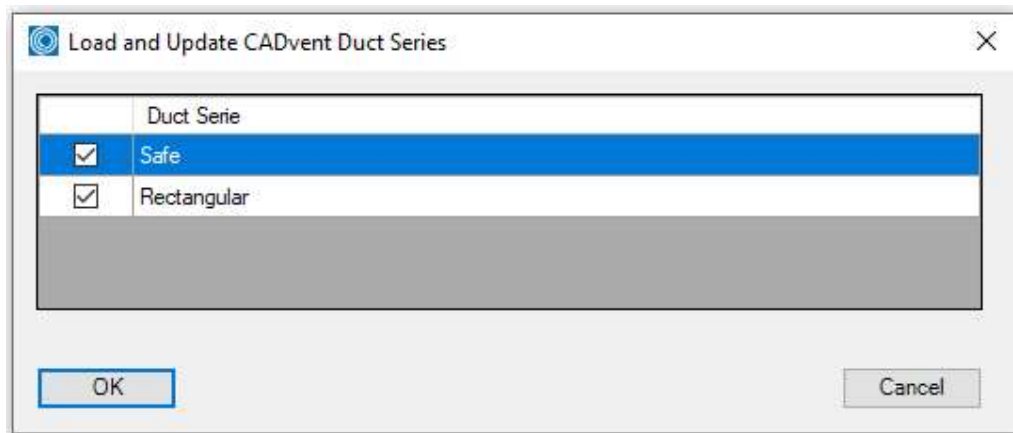
The CADvent tab contains the CADvent commands



4.1 Duct Series

The Duct Series function allows the user to add Lindab Safe or Rectangular fitting families to the Revit project and use them for the ductwork design.

When pushing the Duct Series button the user will get a dialog to add the Lindab Safe or Rectangular Duct Series to Revit:



On "OK" the families will be loaded and, if necessary, upgraded to the current version of Revit in use:

Loading Duct Serie Lindab Safe



Please note that the Lindab families are designed in Revit 2017, hence this is the oldest version of Revit which can be used with the Lindab Revit families.

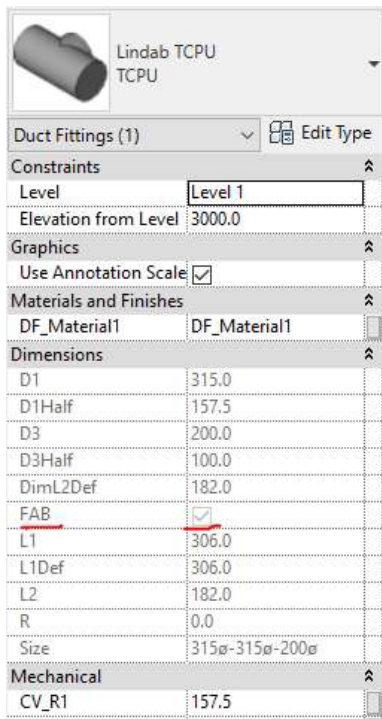
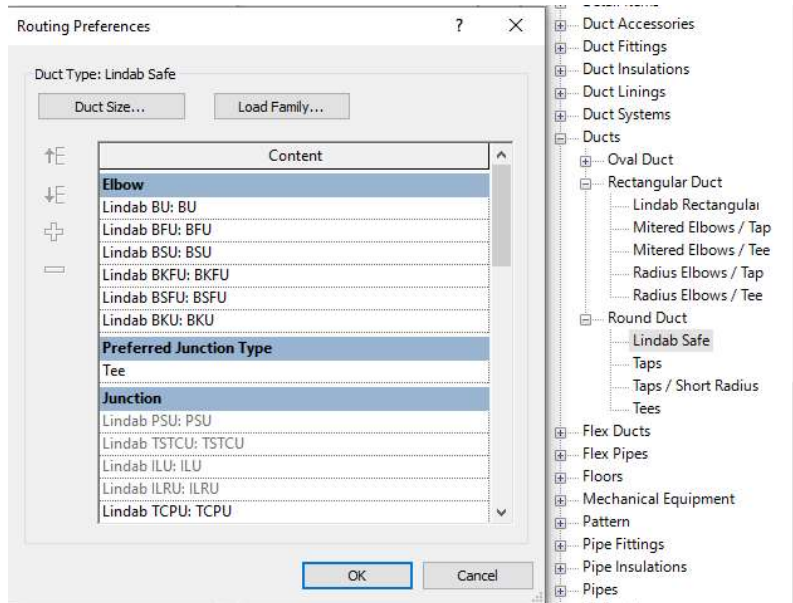
When all families have been generated into Revit, they are available under the Duct Fitting family type:



- [-] Duct Fittings
 - [+] Lindab BFU
 - [+] Lindab BKFU
 - [+] Lindab BKU
 - [+] Lindab BSFU
 - [+] Lindab BSU
 - [+] Lindab BU
 - [+] Lindab EPF
 - [+] Lindab EPFH
 - [+] Lindab ESHU
 - [+] Lindab ESU
 - [+] Lindab ILF
 - [+] Lindab ILRU
 - [+] Lindab ILU
 - [+] Lindab MF
 - [+] Lindab NPU
 - [+] Lindab PSU
 - [+] Lindab RCFU
 - [+] Lindab RCLU
 - [+] Lindab RCU
 - [+] Lindab RLU
 - [+] Lindab RU
 - [+] Lindab SMFU
 - [+] Lindab SNPU
 - [+] Lindab TCPU
 - [+] Lindab TCU
 - [+] Lindab TSTCU
 - [+] Lindab TU
 - [+] Lindab TVU45
 - [+] Lindab XCPU
 - [+] Lindab XCU
 - [+] Lindab XU



Routing preferences are set automatically in the Duct system family for Lindab Safe or Rectangular ducts:



Use standard Revit functionality to draw ductwork while having the Duct Type Lindab Safe or Rectangular selected. Make sure that the duct size you are using exists for ducts and fittings depending on the Lindab market. Sizes in Revit are shared for the whole project. They are not assigned to a specific Duct Type.

If the Dimension property FAB for a Lindab fitting is checked it means that the size for that fitting is valid and can be fabricated.



4.2 Update Model function

The Update Model command will replace fitting products when needed to match size and connection rules. This way you can get the correct dimensions in Revit for the different duct fittings as well as the correct connection types (Male/Female) which aren't managed by standard Revit functionality.

Please note that the design of the duct fitting might not be exactly as in reality, important are though the outer dimensions like lengths, diameters and angle.

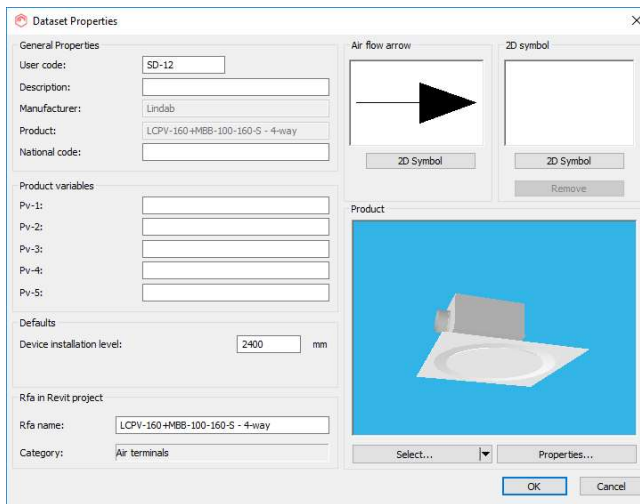
Use the [Model Checker](#) function to check for any issues and fix them with the Update Model function.

4.3 lindQST Terminal

This function opens LindQST and the user can select or calculate air diffusers and chilled beams and transfer the products into the Revit project by pressing Export to Revit.

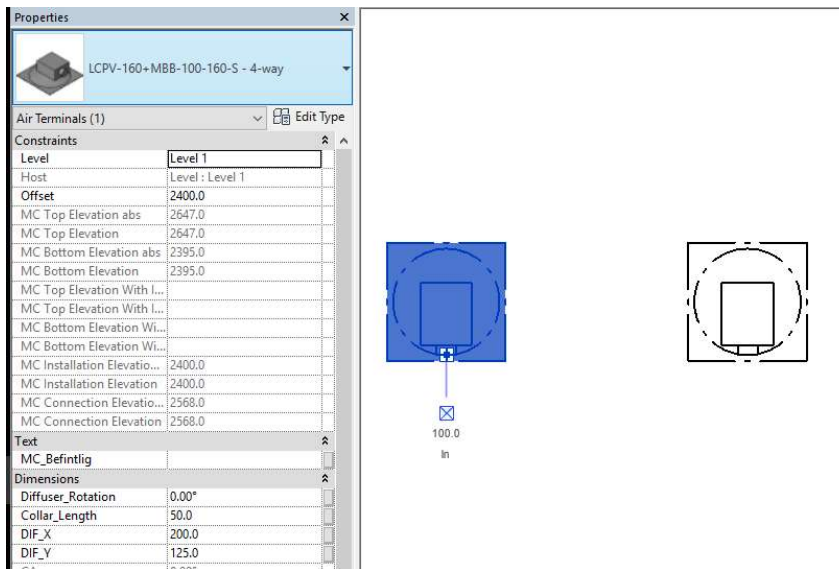
The screenshot shows the Lindab LindQST web interface. The top navigation bar includes 'Login', 'Sign up', 'Settings', and 'Untitled project'. The main menu has 'LindQST', 'Start', 'Documentation', 'Downloads', 'News', and 'Support'. A search bar is present with the text 'find products, documents e' and a 'Global' dropdown. The main content area is titled 'LindQST / Airborne Calculator'. On the left, there are input fields for 'Product category' (VAV diffusers), 'Product name' (LCPV), 'Duct connection size' (100), 'Function' (Supply), 'Plenum box' (Yes), 'Working setup' (4-way), 'Article name' (LCPV-160+MBB-100-160-S), 'Air volume' (35 l/s), 'Room attenuation' (4 dB), and 'Adjustment pressure' (0 Pa). A 'Calculate' button is at the bottom of these fields. On the right, the product 'LCPV-160+MBB-100-160-S' is selected, and the 'Export to Revit' button is highlighted with a red box. Below this, a green message states 'LCPV-160+MBB-100-160-S successfully exported.' A 'Results' table shows: Face velocity (0.0 m/s), Total pressure loss (51 Pa), Sound power level (36 dB(A)), Sound pressure level (32 dB(A)), and Throw (1.6 m). At the bottom, a 'Pressure and sound power diagram' is shown, plotting pressure loss [Pa] against frequency [Hz]. The diagram shows a total pressure loss curve starting at 51 Pa and several sound power level curves, with the highest being 55 dB(A) at 200 Hz.

The product will also be added to the MagiCAD Dataset in Revit if MagiCAD is installed:



Place the product then one or multiple times into Revit. Settings like the selected airflow are added to the product properties in Revit:

Rotate the product during the placement with "Space" bar.



4.4 lindQST silencer function

Use the lindQST silencer function and select the duct in which you want to place the silencer. A browser window will pop up.

Make the 3 Step selection and calculate your silencer. Change the parameters if you like.

Press finally Export to Revit. A green text field will inform you about the succeeded data transfer.

Press Continue in the bottom right corner of the browser window to finalize the transfer.

NOTE: You can calculate the branch or network before using the silencer function for lindQST, then the sound data will be transferred as well.



Login Sign up Settings **Untitled project**

lindQST Start Documentation Downloads News Support

lindQST / Silencer Calculator

1 2 3 4

System: Extract
Placement: Before fan
Fan: Not selected
Lw before: 63 125 250 500 1K 2K 4K 8K
Duct type: Circular
Silencer type: Straight
Product name: KVAP
Duct connection size: 250 mm
Length: 600 mm
Design option: 0
Air volume: 250 l/s

KVAP-250-600-0

Generate PDF Generate DXF + Add to project **Export to Revit**

KVAP-250-600-0 successfully exported.

Product information Results

Total pressure loss: 9
Face velocity: 5.1

	63	125	250	500	1K	2K	4K	8K	dB(A)	NR
Lw before	0	0	0	0	0	0	0	0	7	8
Insertion loss	7	6	13	19	25	28	19	13		
Self-generated noise	26	26	25	24	23	22	17	12	28	25
Lw after	26	26	25	24	23	22	17	12	28	25

Add the silencer to the MagiCAD Dataset and place it then into the ductwork:

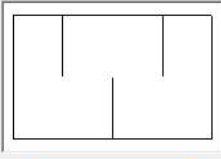
Dataset Properties

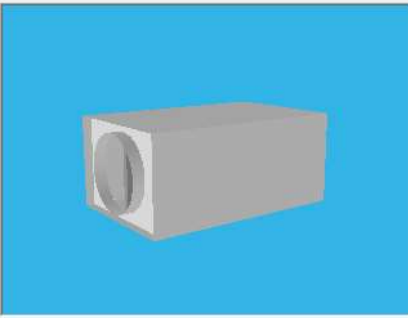
General Properties
User code: SL10
Description:
Manufacturer: Lindab
Product: KVAp-250-600-0
National code:

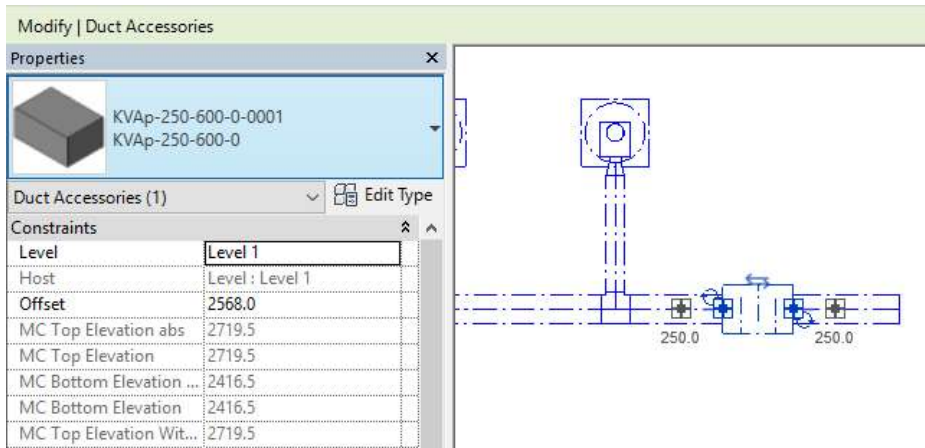
Product variables
Pv-1:
Pv-2:
Pv-3:
Pv-4:
Pv-5:

Defaults
Device installation level: 0 mm

RFA in Revit project
RFA name: KVAp-250-600-0
Category: Duct accessories

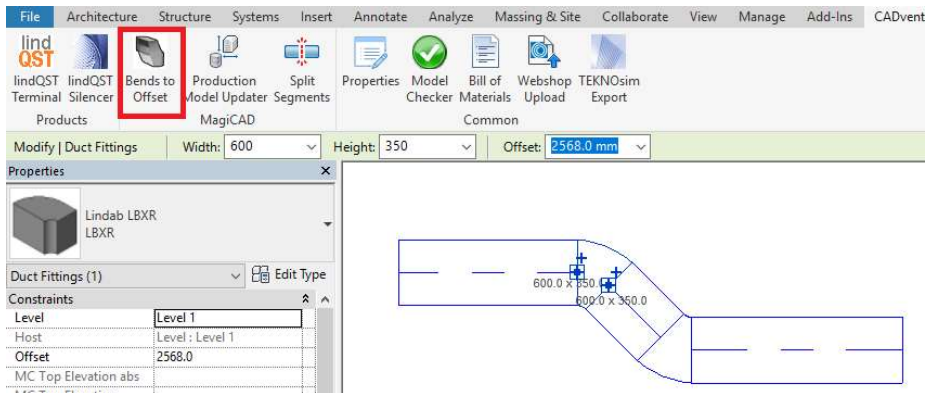
2D Symbol

Select...

Product

Select... Properties...
OK Cancel

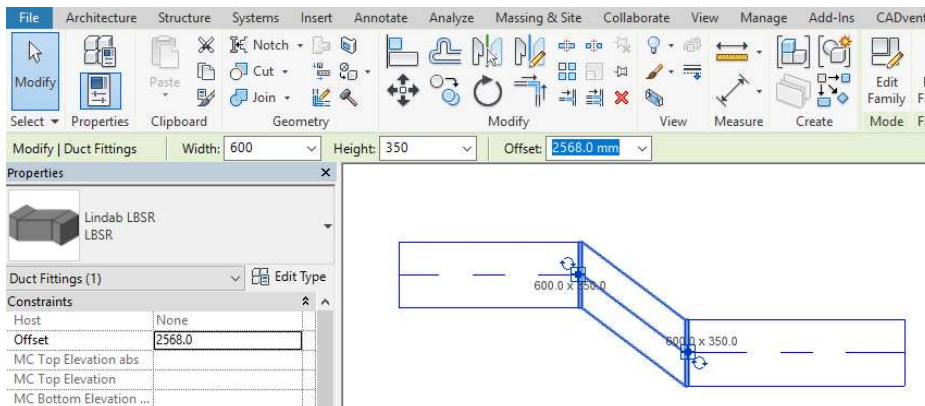


4.5 Bends to Offset

This function creates a rectangular Offset from two bends and a short piece of duct. Just select one the two bends and press the “Bends to Offset” button:



This will convert the 3 products into 1 Offset:

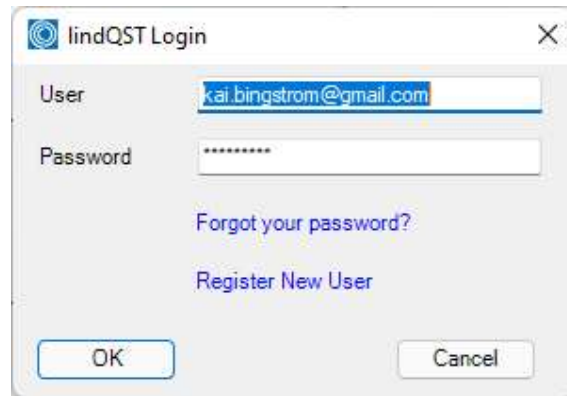




4.6 Link to LindQST project

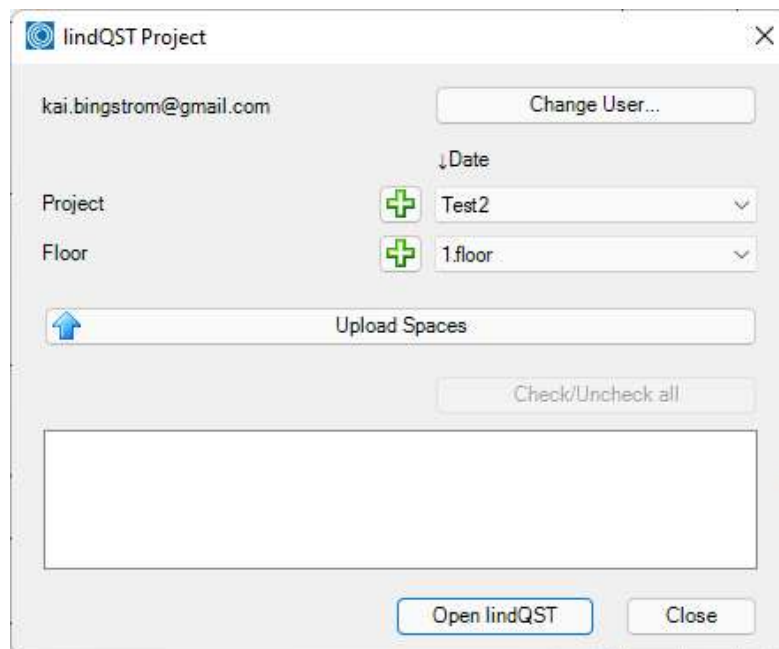
With this function the user can transfer Revit MEP-Spaces to LindQST and create all levels and rooms to LindQST.

When clicking the function you will be asked to sign into LindQST with your account details:



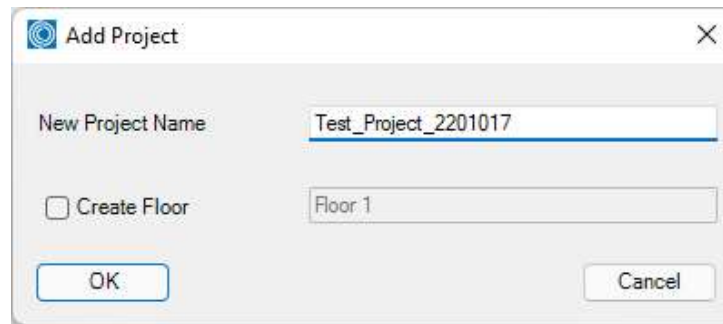
A new dialog will open where you have the following functions:

- Change user
- Select or add a new LindQST project
- Select or add a new floor to the selected project
- Upload Spaces to LindQST

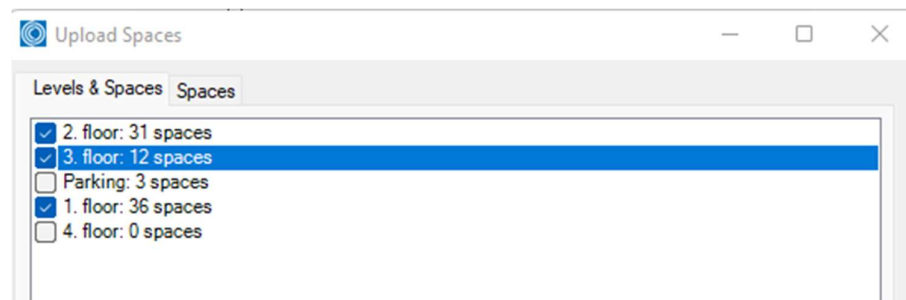




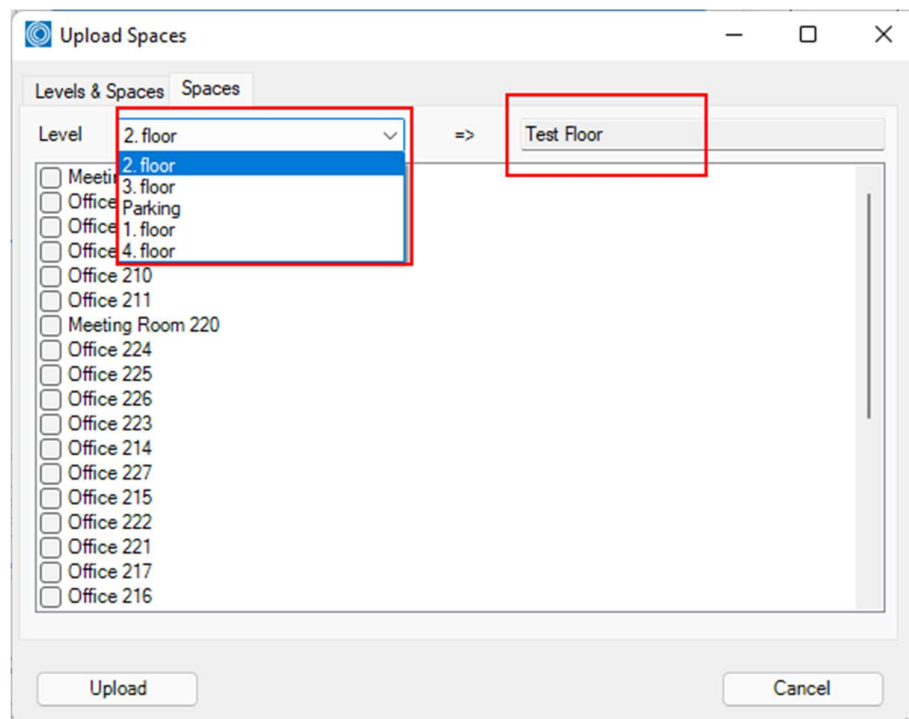
When creating a new project you don't necessarily have to add a floor. These can be included to the export from Revit:



When uploading the project you will be asked which floors you want to upload:

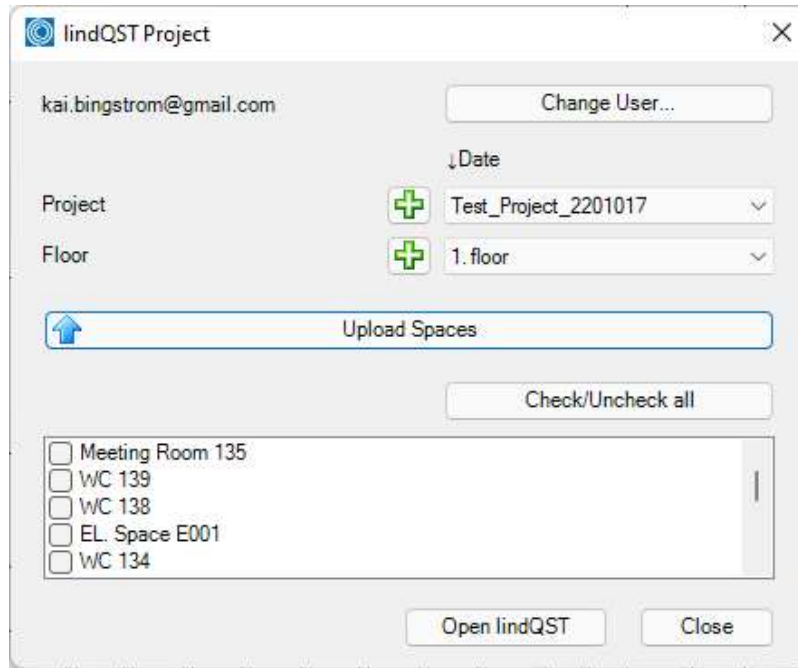


When selecting Floor export it is possible to select which floors and spaces to be exported and to which existing floor in LindQST:

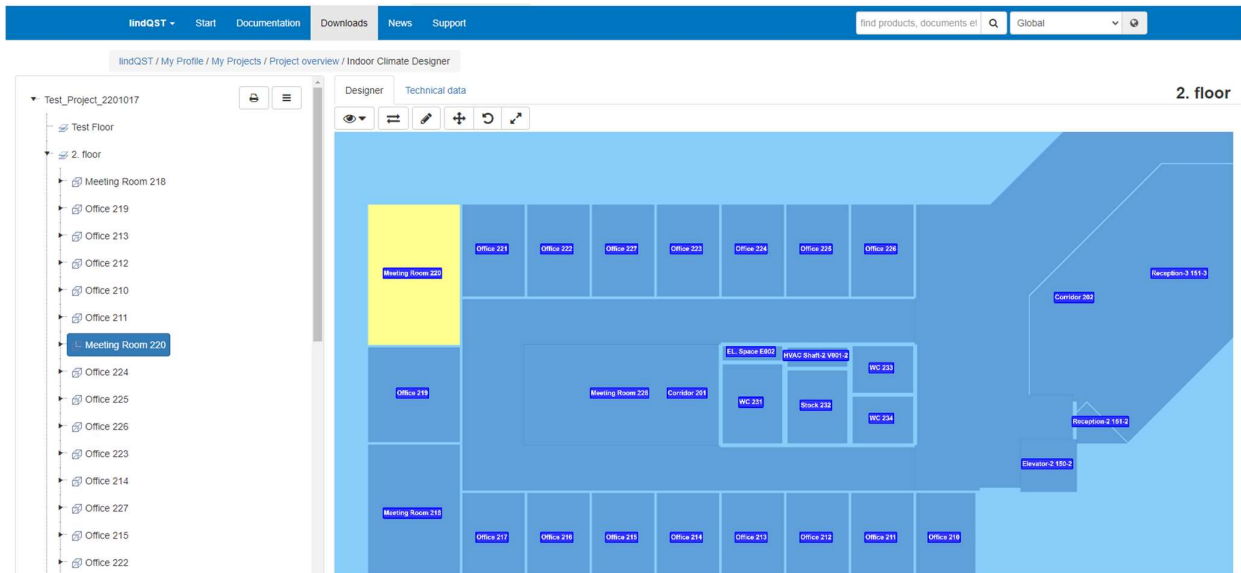




After executing the export the available uploaded spaces will be visible in dialog in CADvent plugin and your default web browser will open with LindQST:

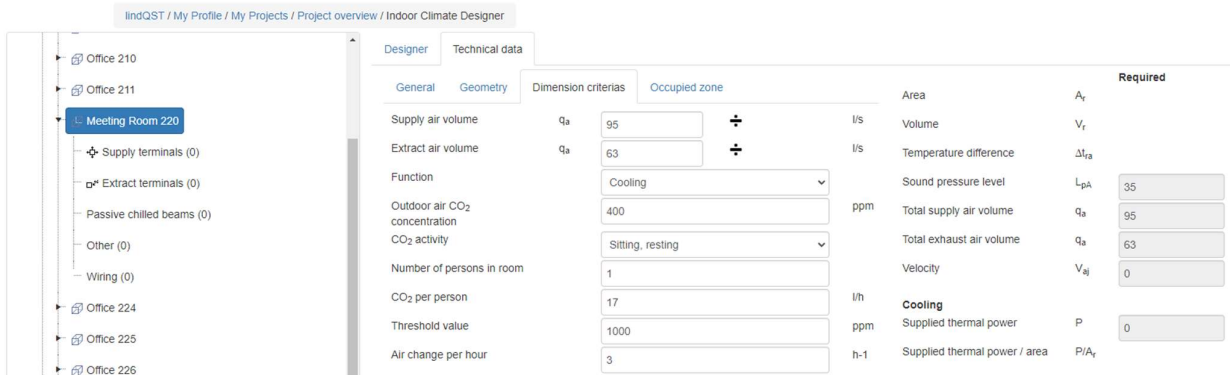


In LindQST you will then be able to see floors and spaces that were uploaded and created:

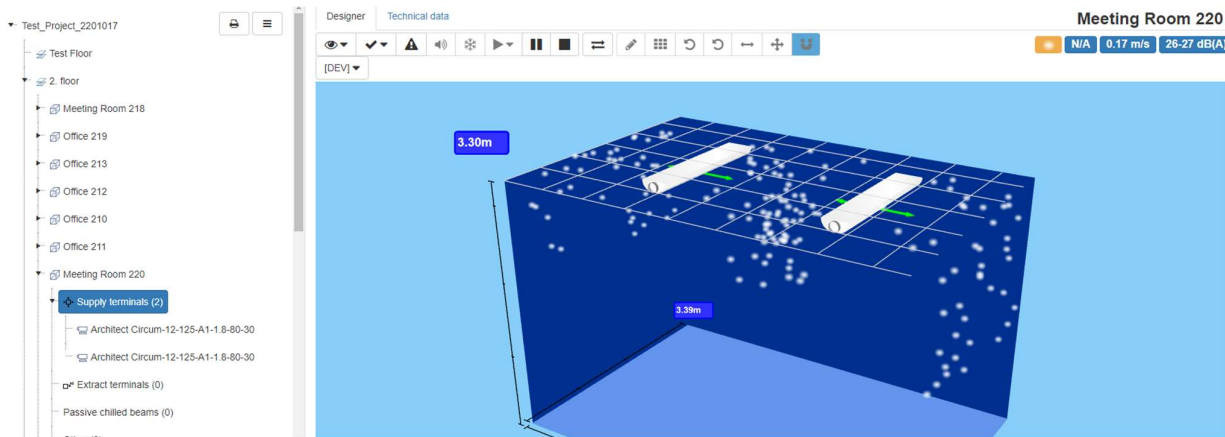




Besides the geometry the values for required supply and extract airflows are exported as well if available in Revit:



Now you find, configure and calculate Lindab air terminals and chilled beams and simulate them in LindQST:

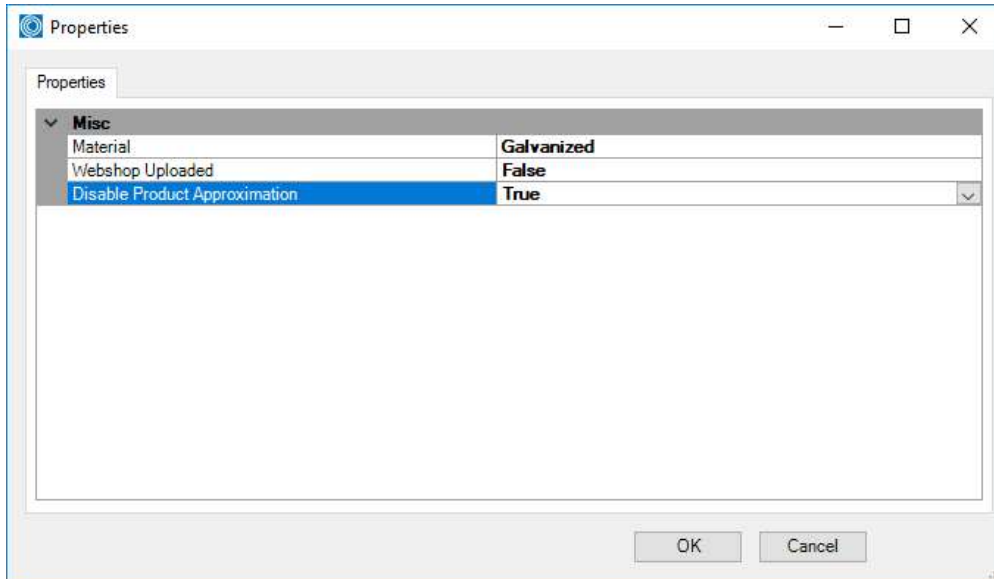


You can use the [LindQST MagiCAD](#) plugin to download the products from LindQST and insert them into Revit.

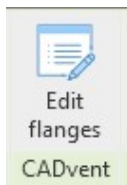


4.7 CADvent Properties

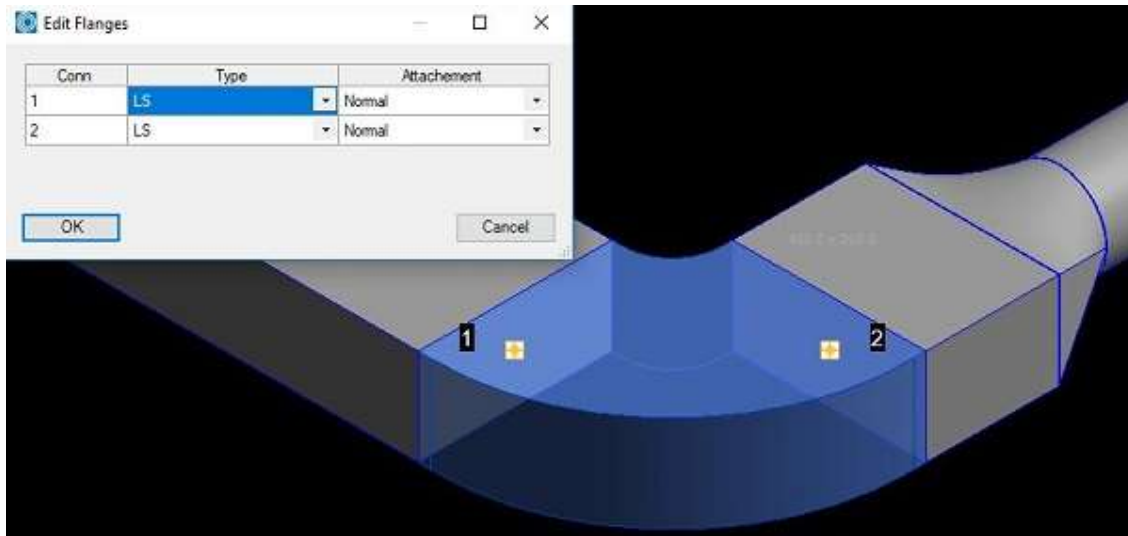
In the CADvent Properties the user can view and adjust settings for material, webshop upload and the Product Approximation. The approximation function interprets certain products if the Production Model can't be applied. In that case the Revit object will be substituted by a real Lindab product, including product code so that it can be ordered while the representation in Revit might not be accurate.



4.8 Edit Flanges



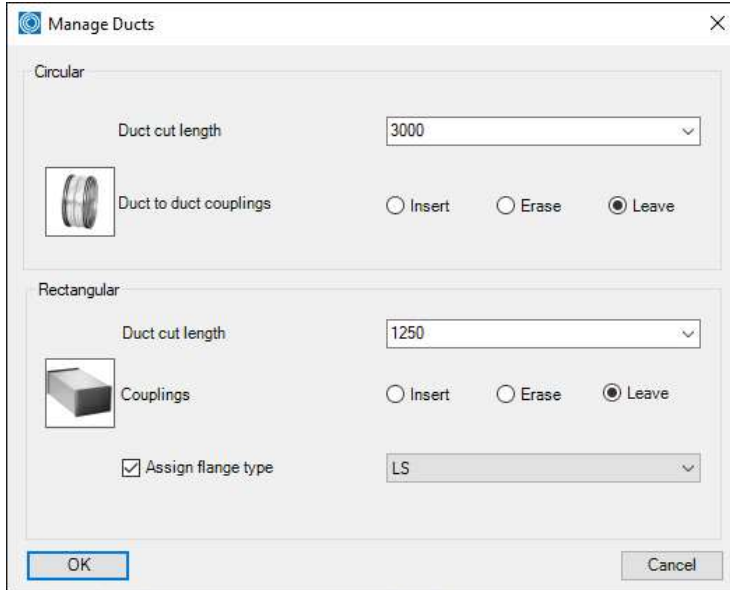
Select a single rectangular duct to show the current connection of flanges. In the dropdowns you can choose the type and attachment options.





4.9 Manage Ducts

The Manage Ducts function allows you to cut ducts into standard lengths, set flange type and insert connectors automatically.

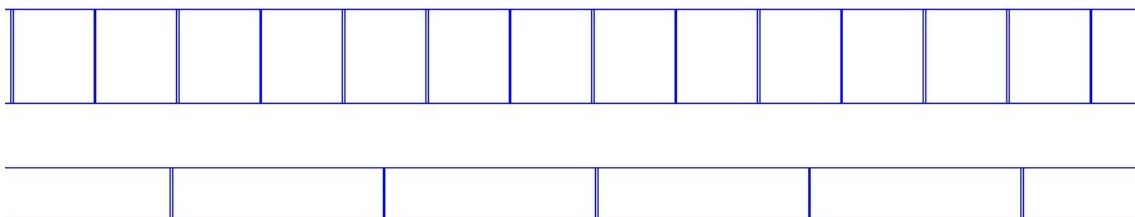


In the Round Selection you can set parameters to insert duct to duct and fitting to fitting couplings and select a standard length to cut round ducts into standard lengths. You can select a market dependant standard length or manually type a standard length.

The buttons Insert, Erase and Leave define whether you want to cut or re-cut the ducts (Insert), whether you want to remove existing duct cutting (Erase) or you want to leave the round duct cutting as is, f. ex. if you want to change only the rectangular settings.

In the Rectangular selection you have similar functions for duct cutting and insertion of flange types as in the round selection. In addition you also have a selection of market specific flange types and a check button to assign the selected flange type to the rectangular ductwork.

Now you can select the products to be cut by dragging a window or press right mouse click or Return/Enter to select all products in the drawing.

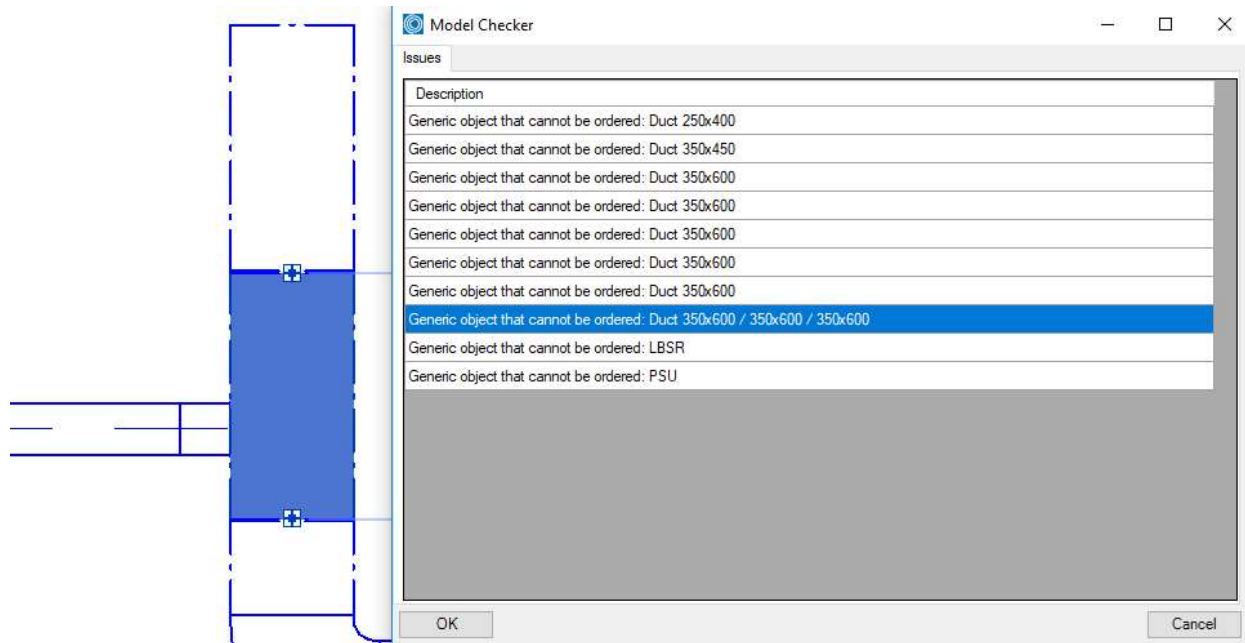


Round and rectangular ducts with inserted flanges and connectors



4.10 Model Checker

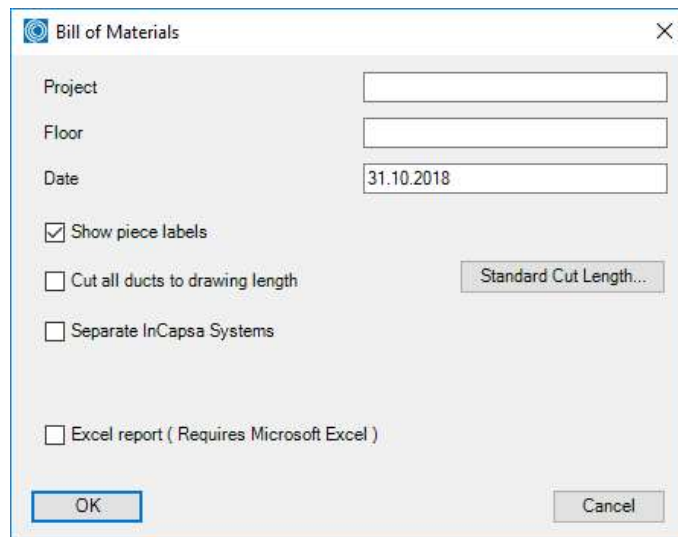
This function selects objects and checks whether they are OK to order. The list shows all objects that are not OK to order. By double-clicking on the product in each line the selected product is moved into focus in the current Revit View to be able to find the related products:



4.11 Bill of Materials

The Bill of Material function creates a material list for the selected ventilation products.

BoM has following settings:

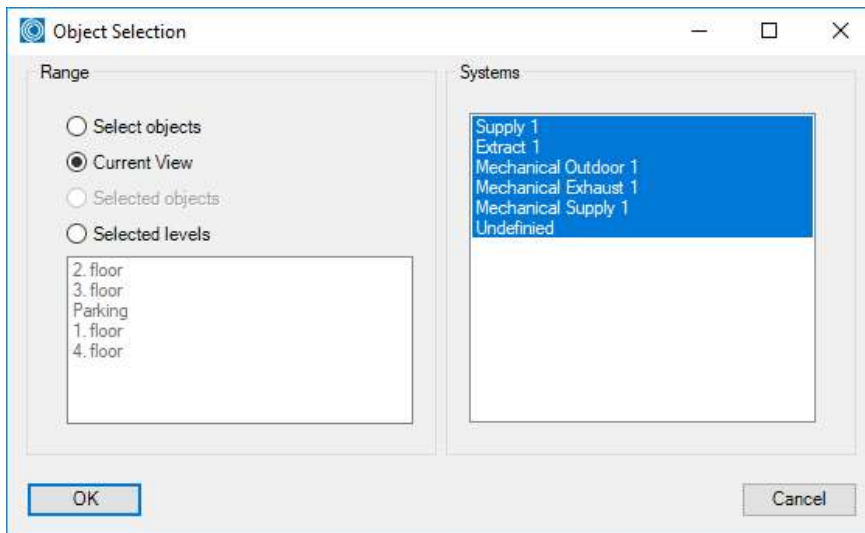


Project: Enter the name of the project if you want to show it on the printouts

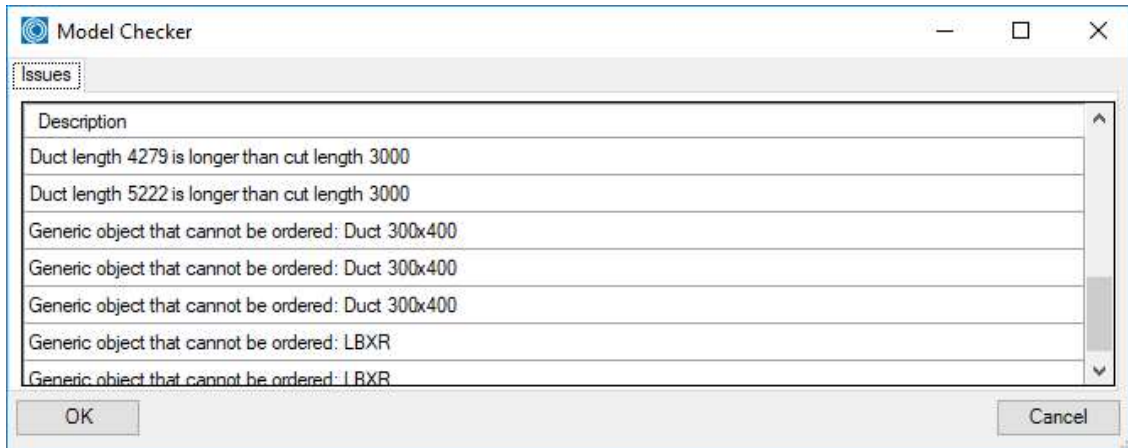


- Floor: Add the description of the floor that you want to show on the printouts
- Date: Sets the current date by default
- Show piece labels: Check this button if you want the BoM to divide each product that has a unique piece label
- Cut all ducts to drawing lengths: This will list all ducts with the individual length, as designed in the Revit project. Otherwise all ducts length will be summed up and listed in standard length.
- Standard cut lengths: Adjusts the standard Lindab cut length according to user standards
- In-Capsa system: Not yet used for CADvent plugin for Revit
- Excel report Exports the current selection and format to Microsoft Excel

When you are finished with setup for the Bill-of-Materials you can push the OK button to get to the selection to select the objects that should be included in the BoM-report:



The Model Checker function will automatically check if the selected objects have any deviations from the standard and addresses in a table as shown below:



When pushing the OK button 2 dialogs will be opened. One dialog for the circular duct system components and technical products like diffusers, silencers and dampers and one dialog to show the rectangular ductwork:



Materialspecification

Projekt	Testprojekt
Del	Entréplan
Datum	31.10.2018

Typ / Tillverkare / Material	Produkt	Pos. nr.	Antal
Lindab			
<i>Galvanized</i>			
	LCA-125		2
	MBB-125-125-E		2
	NS19-H-S-2-125 - 4-way		2
Lindab			
<i>Galvanized</i>			
	SLCU 125 600 50		1
	SLCU 125 900 50		1



lindab | we simplify construction

Projekt	Testprojekt
Del	Entréplan
Datum	31.10.2018

CADvent plug-in 1.19.1

Materialspecification

Galvanized

LKR	Pos. nr.	Antal	A	B	L						fläns 1	fläns 2	fläns 3
		1	600	400	1019						LS	LS	
		1	600	400	1042						LS	LS	
		2	600	400	1250						LS	LS	LS
		14	600	400	1250						LS	LS	
		1	600	400	249						LS	LS	
		1	600	400	495						LS	LS	
		1	600	400	749						LS	LS	
		1	600	400	969						LS	LS	

LBSR	Pos. nr.	Antal	A	B	C	E	L				fläns 1	fläns 2	fläns 3
		1	600	400	600	518	1100				LS	LS	

LBXR	Pos. nr.	Antal	A1	A2	B	R	ANGL E	L1	L2			fläns 1	fläns 2	fläns 3
		2	600	600	400	100	45	25	25			LS	LS	
		1	600	600	400	100	90	25	25			LS	LS	

LEPR	Pos. nr.	Antal	A	B	L						fläns 1	fläns 2	fläns 3
		1	600	400	0						LS		

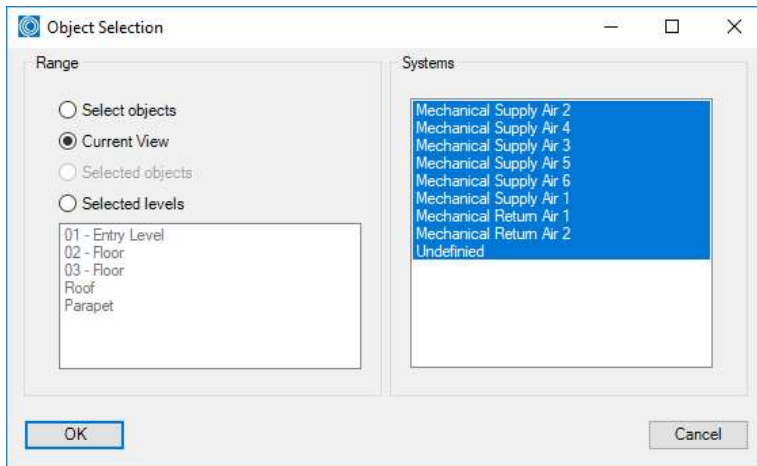


4.12 Webshop Upload

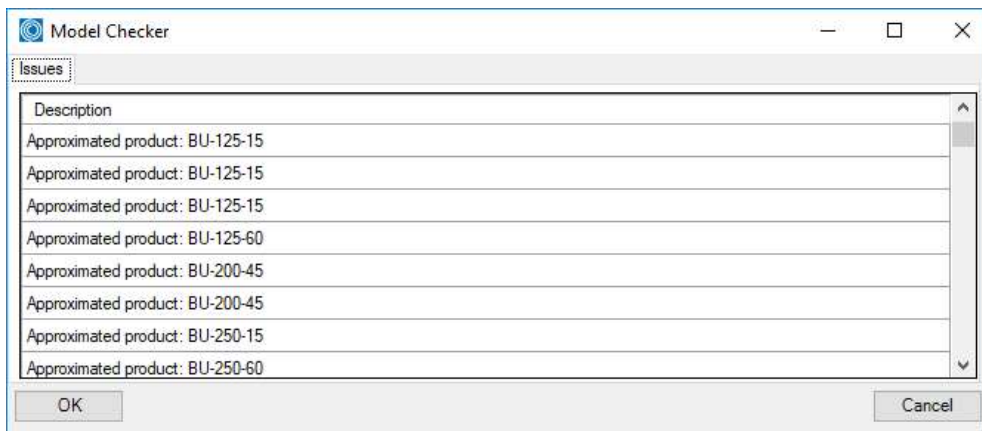
The webshop upload allows the user to collect and upload products to the Lindab webshop.

NOTE: The webshop is available in specific markets, for more information please contact your local representative.

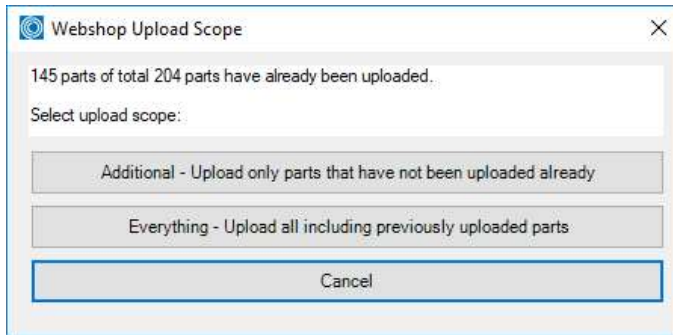
When pushing the webshop button, the user is prompted to select the range of products to upload:



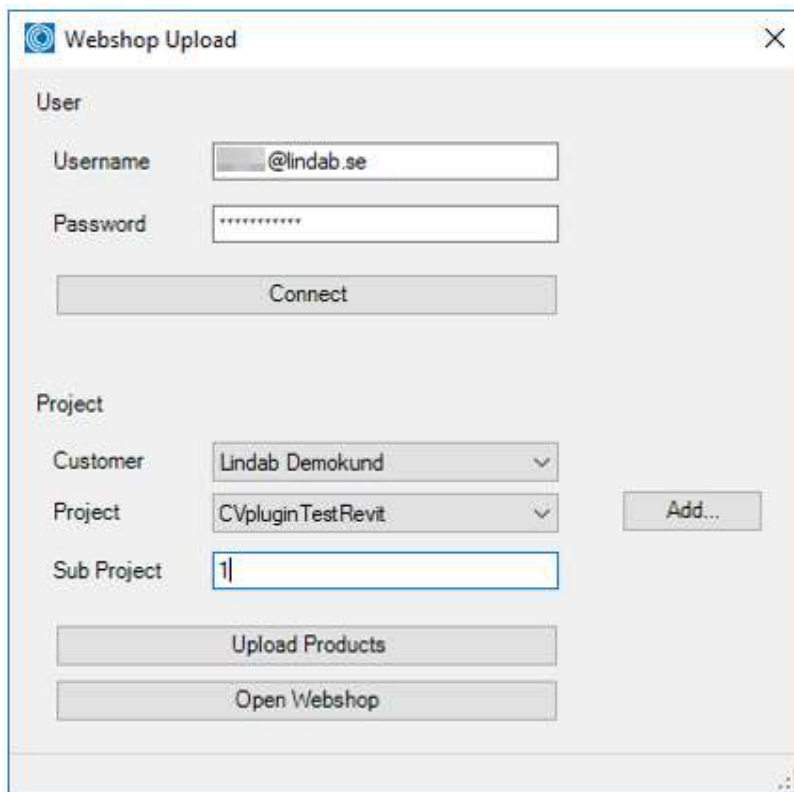
Just in the BoM function, the products to be uploaded will be checked for compatibility with the Model Checker:



In the next step the user will be shown whether there have already products been uploaded and will give alternatives as shown below to upload only the remaining products or to upload all products, including those that have already been uploaded once:



After selecting which the upload function the actual connection to the webshop will be opened:



- Username: Enter your or your company's user name for the Lindab webshop
- Password: Your or your company's password for the Lindab webshop
- Connect: Connects to the Lindab webshop
- Customer: After connecting it shows the customer's identity
- Project: Select a project in the webshop from the list or create a new project
- Sub project: Creates a new sub project in the webshop

After finishing the settings push the "Upload Products" button to execute the upload.

Push the open webshop button to open the Lindab webshop in your default web browser on your computer.



In the browser you must first login and then go to the import tab:



Projekt

	Namn	Skapad	Skapad av	Senast redig...		
>	CVpluginTestRevit	2018-11-01	demo@lindab.se	2018-11-01		

Select your project and sub project to list the products you have uploaded.

NOTE: Mainly rectangular and circular products for the duct system are supported and partly air diffusers. Chilled beams or rectangular silencers are not supported.

Check the list of products and push to confirm the selection:



Projekt : CVpluginTestRevit » 1

Status: Mottagna

Ritning: Skapad av demo@lindab.se

Skapad: 2018-11-01

Godkänn

Artiklarna måste godkännas innan de kan överföras till varukorgen

33 Mottaget 0 Godkänt 0 Tillagt i Varukorgen 0 Misslyckat

Namn	Kommentar	Kvantitet	Position på ritningen	R...
LKR 600 400 1019 *		1	0	✕
LKR 600 400 1042 *		1	0	✕
LKR 600 400 1250 *		2	0	✕
LKR 600 400 1250 *		14	0	✕
LKR 600 400 249 *		1	0	✕
LKR 600 400 495 *		1	0	✕
LKR 600 400 749 *		1	0	✕
LKR 600 400 969 *		1	0	✕
SR 125 3000		1	0	✕
SR 125 3000		20	0	✕
SR 200 3000		7	0	✕
BU		3	0	✕

NOTE: The verification of the uploaded products might take a few minutes depending on number and type of products uploaded.

In the end you will get a report of the transactions:

Godkännelse genomförd

Resultat av godkännandet är följande

Godkända rader: 26
Fel på rader: 0
Saknar uppgifter: 7

Ok

Products which have not been accepted can then be replaced or manually configured:



Projekt : CVpluginTestRevit » 1

Status: Godkännande av fast | Ritning | Skapad av: demo@lindab.se | Skapad: 2018-11-01 | [Överför till Varukorg](#)

Artiklar är godkända

0 Mottaget | 27 Godkänt | 0 Tillagt i Varukorgen | 6 Misslyckat

Följande produkter kunde inte godkännas och har därför ej överförts till varukorgen

Namn	Kommentar	Kvantitet	Position på ritningen	E...	R...
LBSR 1 0 1 1 * (285843)		1	0		
LBXR 600 400 600 45 100 * 25 25 (285842)		2	0		
LBXR 600 400 600 90 100 * 25 25 (285842)					
PSU 125 125 (252349)					
SLCU 125 600 50 (279198)					
SLCU 125 900 50 (279198)					

Ersätt artikel

SLCU 125 600 50

Sök efter ersättningsartiklar

279164	SLCU12560050	LJUDDÄMPARE
279170	SLCU16060050	LJUDDÄMPARE
279171	SLCU16090050	LJUDDÄMPARE
279176	SLCU20090050	LJUDDÄMPARE
279181	SLCU125600050	LJUDDÄMPARE

[Ersätt artikel](#)

© Lindab 2015 | [Gilla 905](#) | [Private Policy](#)

In the last step you can export all products to your shopping cart and place the order:



Produkter i varukorgen

BESKRIVNING	BRUTTOPRIS	NETTOPRIS	RABATT%	KVANTITET	LAGERSTATUS	BELOPP	
BU 250 90 GALV RÖRBÖJ	463,00	185,20	60%	<input type="text" value="3"/>	0 ⚠	555,60	✖
257012	<input type="button" value="Kommentar"/> <input type="button" value="Godsmärke"/>						
BU 125 15 GALV RÖRBÖJ	162,00	64,80	60%	<input type="text" value="4"/>	46 ✓	259,20	✖
257120	<input type="button" value="Kommentar"/> <input type="button" value="Godsmärke"/>						
BU 125 60 GALV RÖRBÖJ	175,00	70,00	60%	<input type="text" value="1"/>	0 ⚠	70,00	✖
257034	<input type="button" value="Kommentar"/> <input type="button" value="Godsmärke"/>						
BU 125 90 GALV RÖRBÖJ	175,00	70,00	60%	<input type="text" value="2"/>	164 ✓	140,00	✖
257006	<input type="button" value="Kommentar"/> <input type="button" value="Godsmärke"/>						

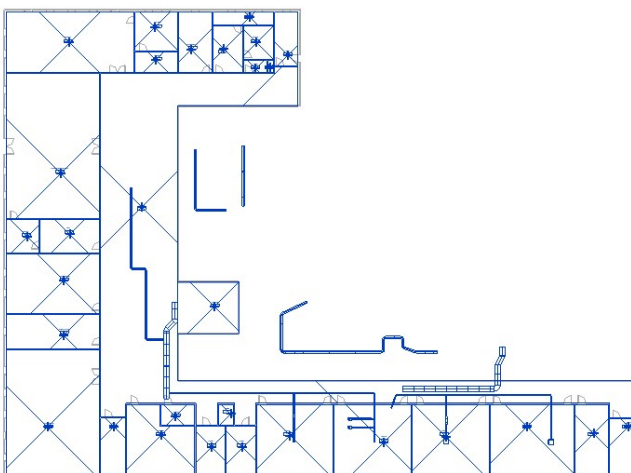
4.13 TEKNOsim export

The TEKNOsim export function the TEKNOsim software from Lindab for energy and climate calculations. For more information please visit:

<http://www.lindab.com/global/pro/downloads/software/ventilation/Pages/TEKNOsim.aspx>

This function exports the geometry of the marked Revit rooms or MEP-Space including their surfaces and some properties and saves them to a file, which can be imported into TEKNOsim.

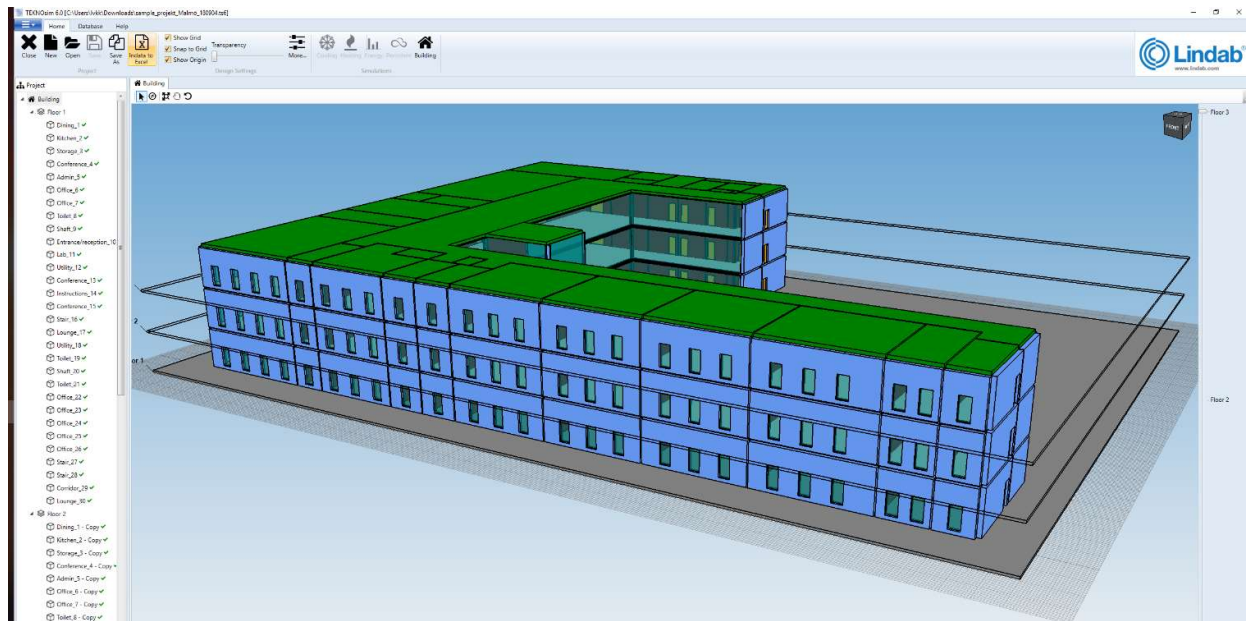
Mark the Rooms/MEP-Spaces of the floor you want to export and push the TEKNOsim export button:



NOTE: you can just select any view with visual Rooms/Spaces and mark all objects in the View. The export function will filter all objects which are not Rooms or Spaces!



You can now save the file on your computer and open it in TEKNOsim:





5 MagiCAD template and Dataset

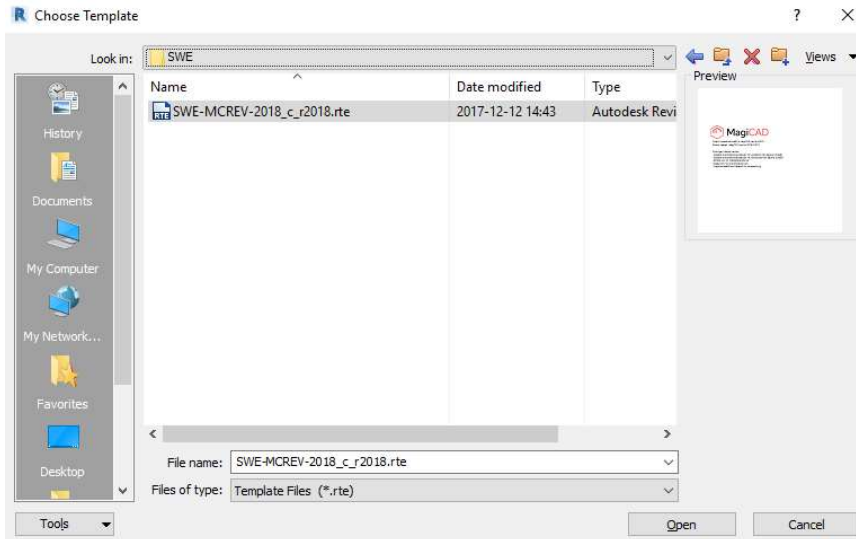
In order to use MagiCAD functionality a MagiCAD installation is required with an active Ventilation module license. This will add an extra panel to the CADvent tab.



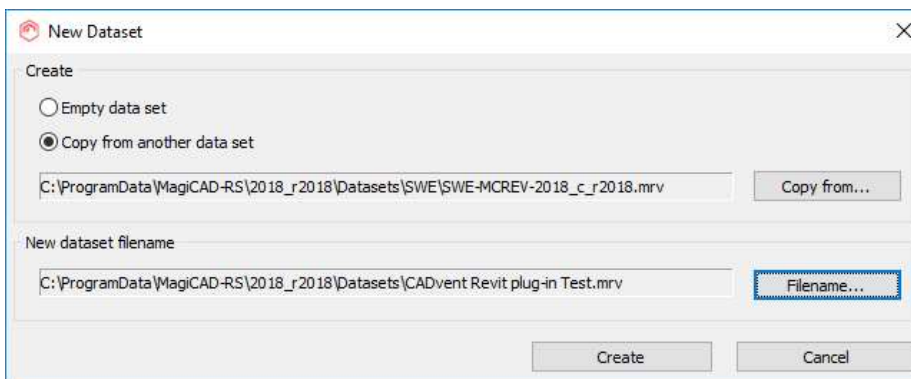
MagiCAD provides a number of localized Revit and Dataset templates for different markets. These can be downloaded from:

<https://portal.magicad.com/Download/GetProductCategoryList?categoryId=7#>

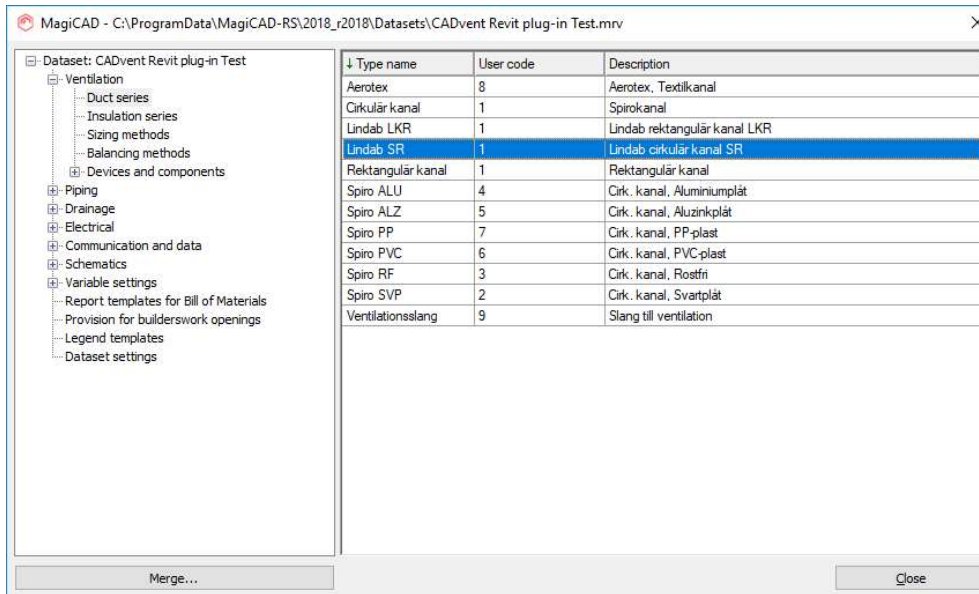
After downloading the localizations, you can install them on your computer. Start Revit and start a new project with a localized template for Revit:



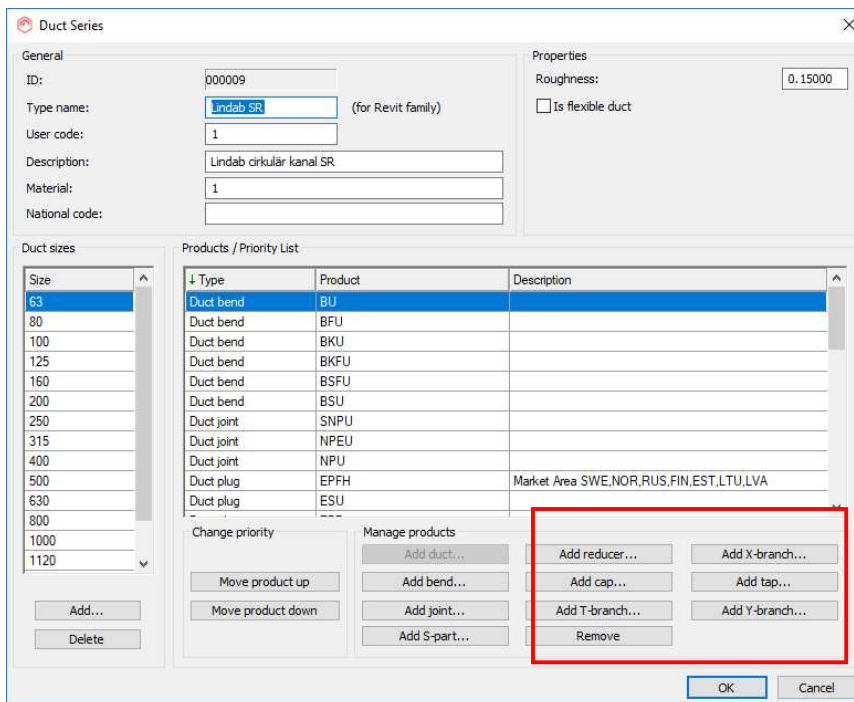
In the same way you can now select a localized Dataset for MagiCAD. Go to the MagiCAD Common tab and select “New Dataset”, then you can create a copy of the template Dataset for your Revit project:



Open then the Dataset with the “Modify Dataset” function and navigate to the Duct Series:

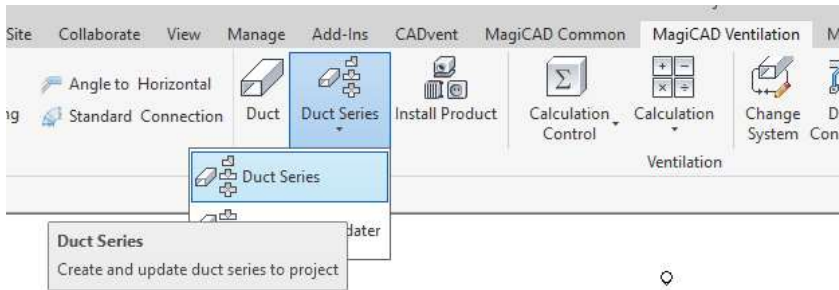


When double-clicking on the Duct Series the dialog for the current Duct Series opens:



In most of the Dataset templates, the Lindab SR Duct Series is already set up. You can also create a new Duct Series and add Lindab ductwork products in the “Manage products” section.

After finishing the Duct Series, you must go to the Ventilation tab in MagiCAD and select the “Duct Series” function to make the products available in Revit:



Click on the Duct Series button and select the Duct Series you want to have available in the Revit project. Repeat this function for all Duct Series you want to have available in the Revit project.

Now you can start designing your ventilation project with Revit or MagiCAD ductwork drawing functions or use the functions in the CADvent plugin for Revit for the LindQST or TEKNOsim connection.

5.1 Production Model Updater

The Production Model Updater is a MagiCAD function that updates the generic Revit product models to “real” products. In Revit, the products are not designed according to the Lindab Production Model. This command updates the ductwork in your system into fabrication models, that can be ordered in the Lindab Webshop. Examples are different types of products (pressed bends to segmented bends) or male/female connection types like a reducer with a female connector directly connected to a T-piece.

Any product that is edited in Revit AFTER using the Production Model Updater will be reversed into the generic model, therefore this function should be last to use before making a bill of materials, use the CADvent Model Checker or the webshop upload.

When using this function you have to select a branch or a complete network. We recommend that you run the Production Model Updater function regularly to check smaller ready made parts of the ductwork. This to secure to not get a lot of errors so that Revit's built in functions reverse the changes MagiCAD does with the project when exchanging products or update product measures.



MagiCAD - Product Selection Report

Edit

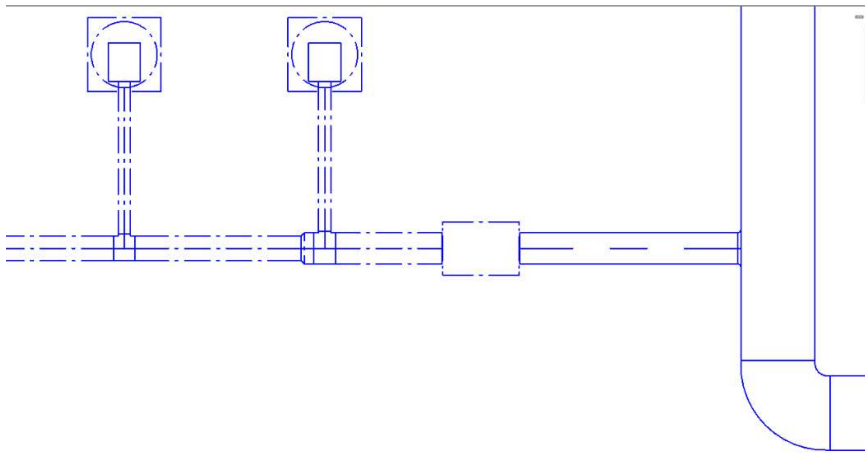
Supply Outdoor supply
 Extract Outdoor exhaust

Level	Type	Series	Product	Size	L [m]	Warnings
Level 1	DUCT	1	SR-100	100	1.2	
Level 1	DUCT	1	SR-100	100	1.2	
Level 1	BEND-90	1	BU-100-90	100		
Level 1	DUCT	1	SR-100	100	1.2	
Level 1	REDUCER	1	RCFU-160-100	160/100		
Level 1	DUCT	1	SR-100	100	1.2	
Level 1	T-BRANCH	1	TCPU-160-100	160/100		
Level 1	DUCT	1	SR-160	160	1.3	
Level 1	REDUCER	1	RCFU-200-160	200/160		
Level 1	DUCT	1	SR-100	100	1.2	
Level 1	T-BRANCH	1	TCPU-200-100	200/100		
Level 1	DUCT	1	SR-200	200	1.3	
Level 1	T-BRANCH	1	TCPU-200-100	200/100		
Level 1	DUCT	1	SR-200	200	1.3	
Level 1	REDUCER	1	RCFU-250-200	250/200		
Level 1	DUCT	1	SR-100	100	1.2	
Level 1	T-BRANCH	1	TCPU-250-100	250/100		
Level 1	DUCT	1	SR-250	250	0.9	
Level 1	DUCT	1	SR-250	250	1.8	
Level 1	TAP	1	ILRU-250	250		
Level 1	PLUG	1	LEPR-400-250	400x250		
Level 1	DUCT	1	LKR-400-250-1500-*	400x250	1.5	
Level 1	REDUCER	1	LDR-600-350-400-250-45	600x350/400x250		
Level 1	DUCT	1	LKR-600-350-972-*	600x350	1.0	
Level 1	DUCT	1	LKR-450-350-1998-*	450x350	2.0	
Level 1	T-BRANCH	1	LTTR-600-450-600-350--	600x350/450x350		
Level 1	DUCT	1	LKR-600-350-972-*	600x350	1.0	
Level 1	BEND-90	1	LBXR-600-350-600-90-10	600x350		
Level 1	DUCT	1	LKR-600-350-2899-*	600x350	2.9	

Previous warning/error Next warning/error Ok - Update to model Cancel

When using the function you can see in the “Product” column, which is the product that will be used or configured in the Revit project. If a product is not available or can’t be configured, the dialog will show warnings.

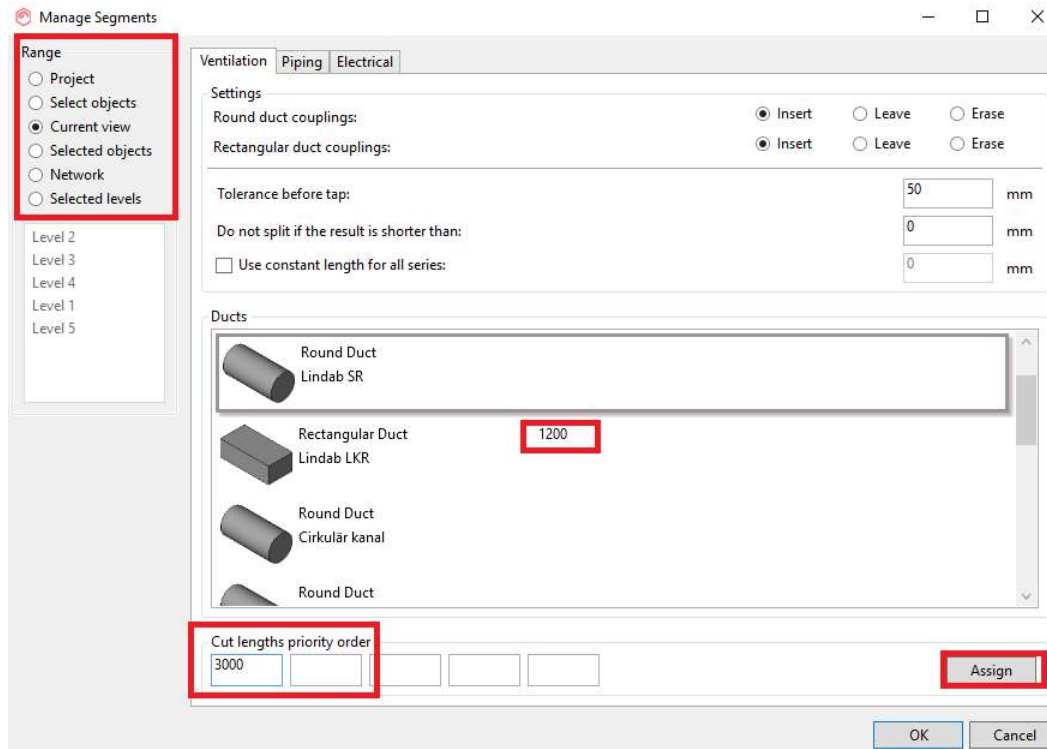
After pushing the “OK – Update to model” button, MagiCAD will adjust the products in the Revit project according to the Lindab Production Model.





5.2 Split segments function

“Split segments” function is a MagiCAD function to split ducts into standard lengths. In this option you can add standard lengths and apply those to cut ducts into their standard lengths including additional features for tolerances and other limitations. For description of the full functionality please read the MagiCAD for Revit User Manual.

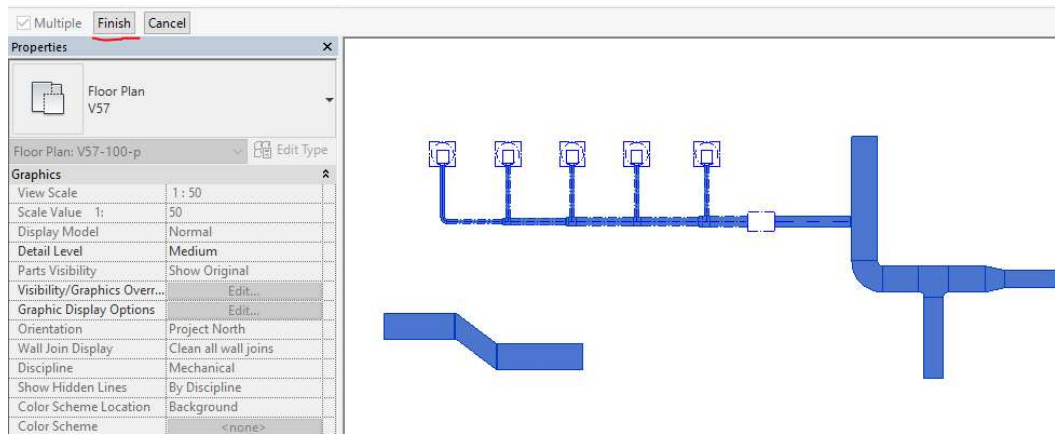


If you push the “Split segments” button, the above dialog is shown. Select the range in the upper left corner to make a selection to which this function will apply. Select the Lindab duct series’ and add the standard lengths in which the ducts should be cut.

NOTE: You can apply several values, the prioritization goes from left to right values. This means that in case the first value can’t be applied because of any limitations, MagiCAD will use the next available value to cut the duct.



Push the OK button to execute the function. Depending on which range you have selected the user might be prompted to select the products to be cut and confirm the action in Revit:



Now the product are cut and connectors are inserted where applicable.

NOTE: As Revit adjusts the ductwork objects you will need to perform the Production Model Updater function once more to convert all products into the Lindab Production Model.