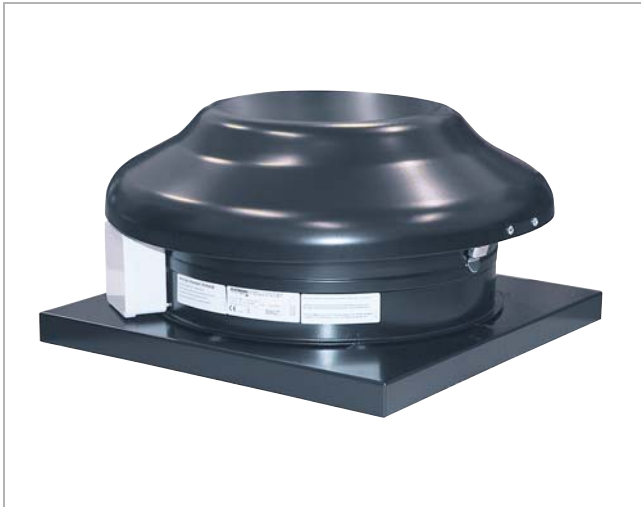


Swing Out Roof Fan

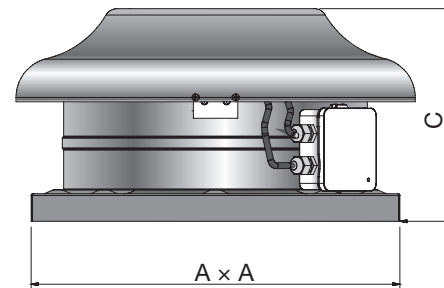
RFS



Description

The RFS range of roof fans have a circular flat weathering skirt and are easy to install. The combination of a high quality external rotor motor and backward curved impeller ensures high performance and safe operation. They are manufactured from polyester coated galvanised sheet metal for superior corrosion resistance. The speed controllable motors have sealed for life ball bearings. RFS roof units have a swing out design for easy cleaning and maintenance and have an IP44 rating

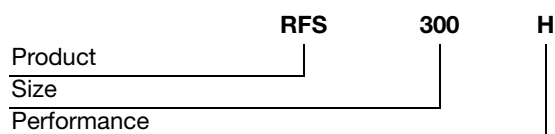
Dimensions



Product	Dim mm	A mm	A mm	C mm	m kg
RFS300	300	305	305	224	4,30
RFS300H	300	305	305	224	4,30
RFS400H	400	415	415	235	7,00
RFS400	400	415	415	235	6,20

All fans are 230 volt.

Ordering example

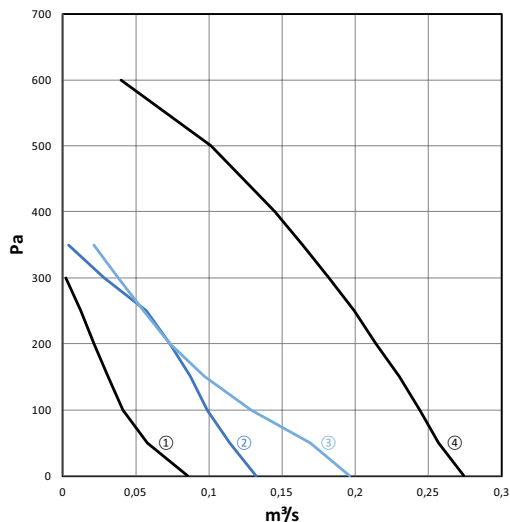


- 1
- 2
- 3
- 4
- 5
- 6
- 7
- 8
- 9
- 10
- 11
- 12
- 13
- 14
- 15
- 16
- 17
- 18

Swing Out Roof Fan

RFS

Technical data



Graph Ref.	Product	m³/s @ Pa											Motor W	Amps FLC	Speed RPM	
		0	50	100	150	200	250	300	350	400	500	600				
1	RFS300	0,085	0,058	0,041	0,031	0,021	0,012	0,02						44	0,19	1700
2	RFS300H	0,0132	0,114	0,099	0,087	0,073	0,057	0,028	0,004					62	0,31	2460
3	RFS400	0,196	0,169	0,129	0,097	0,073	0,055	0,038	0,021					91	0,42	1850
4	RFS400H	0,274	0,257	0,244	0,23	0,214	0,199	0,182	0,164	0,145	0,101	0,04		141	0,62	2760

Graph Ref.	Product	Frequency	Sound Power Level								dB(A) @ 3m
			63	125	250	500	1K	2K	4K	8K	
1	RFS300	Inlet	37	47	50	49	47	44	34	19	49
		Breakout	47	33	44	48	52	48	39	33	
2	RFS300H	Inlet	46	53	60	59	58	57	49	38	60
		Breakout	47	40	54	58	64	62	54	45	
3	RFS400	Inlet	46	58	60	59	57	52	44	30	58
		Breakout	41	44	56	60	60	57	51	38	
4	RFS400H	Inlet	59	63	66	68	66	63	63	64	61
		Breakout	35	44	57	61	63	61	56	51	