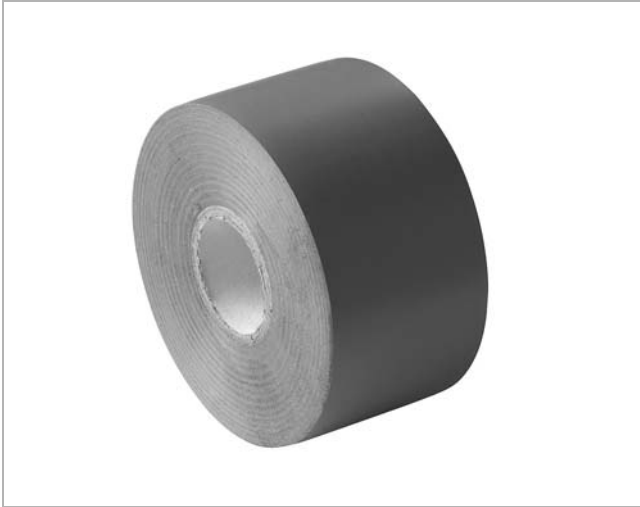


# PVC Installation Tape

# PVC TAPE



## Dimensions

Code	Width mm	Length m	Type
TAPE	50	50	PVC

## Description

Soft tape made of polyvinyl chloride designed for pipes and ducts (ventilation and heating) less exposed to weather conditions. Elastic which allows for relatively smooth surface after applying the tape.

### Material

Polyvinyl chloride (PVC).

### Colour

Matt gray.

### Temperature range

-15–60 °C.

### Total thickness

0,08 mm.

## Ordering example

