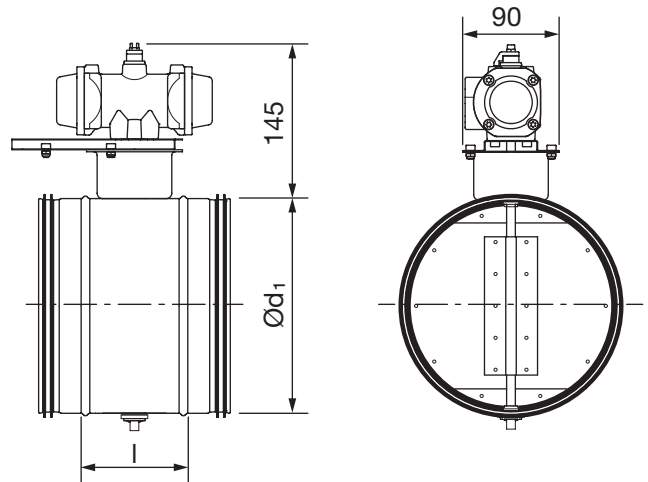


Motorized shut-off damper

DTPU



Dimensions



Description

Shut-off damper with pneumatic actuator

Consists of a DTU damper with a pneumatic actuator installed. The actuator consists of a polyamide housing and metal parts of stainless steel.

When air pressure rises, the actuator open. When air pressure falls, the actuator close under the tension of the spring inside the actuator. The damper blade is closed when delivered.

There is a separate assembly, measuring, balancing and maintenance instruction for this product.

Ø 80–315 fullfills pressure class C in closed position.
 Ø 400 fullfills pressure class B in closed position.

Ød ₁ nom	l mm	m kg	Sealing class past closed blade
80	100	1,30	4
100	100	1,35	4
125	100	1,50	4
160	100	1,70	4
200	100	2,00	4
250	100	2,50	4
315	100	3,10	4
400	100	4,60	4

Technical data for the motors

	PPWS
Air connection	1/4" BSPP
Volume of free air required for full stroke.....	0,075 l
Max pressure	8 bar
Ambient temperature range	-5 to +60°C
Weight	0,50 kg
Running time 0 – 90 °	1 s

	Pressure (Bar)	Position	Torque (Nm)
Spring movement	-	Start	10
Spring movement	-	End	6,7
Pneumatic movement	5	Start	7,4
Pneumatic movement	5	End	4,1
Pneumatic movement	6	Start	10,3
Pneumatic movement	6	End	7
Pneumatic movement	7	Start	13,1
Pneumatic movement	7	End	9,8
Pneumatic movement	8	Start	16,2
Pneumatic movement	8	End	12,9

Ordering example

	DTPU	200	PPWS
Product			
Dimension Ød ₁			
Motor type			