

Motorized shut-off damper

DTPU



Description

Shut-off damper with pneumatic actuator

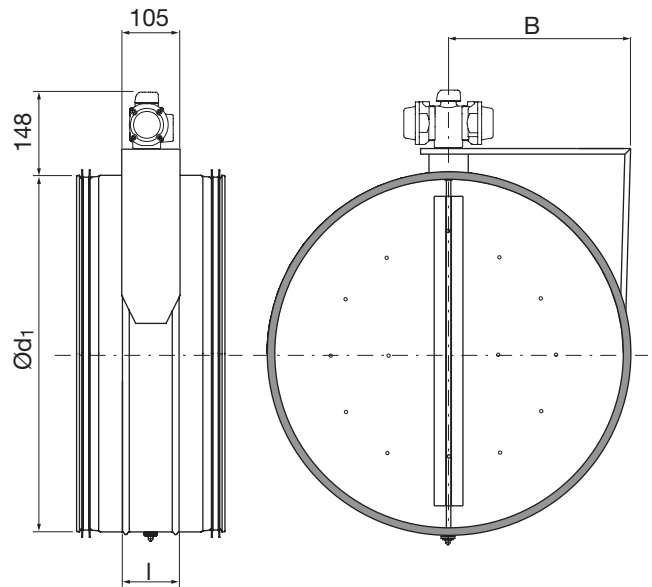
Consists of a DTU damper with a pneumatic actuator installed. The actuator consists of a polyamide housing and metal parts of stainless steel.

When air pressure rises, the actuator open. When air pressure falls, the actuator close under the tension of the spring inside the actuator. The damper blade is closed when delivered.

There is a separate assembly, measuring, balancing and maintenance instruction for this product.

Ø 500–630 fullfills pressure class B in closed position.

Dimensions



Ød ₁ nom	l mm	m kg	Sealing class past closed blade
500	115	7,54	4
630	115	10,3	4

Technical data for the motors

POWS	
Air connection	1/8"
Volume of free air required for full stroke.....	1,7 l _n
Power pressure max	150 kPa (1,5 bar)
Ambient temperature range	-10 to +70°C
Weight	1,4 kg

Running time 0 – 90 °

At power pressure 90 kPa.....	10 s
At power pressure 150 kPa.....	1 s
At spring return	2 s

	Pressure (Bar)	Position	Torque (Nm)
Spring movement	-	Start	18,2
Spring movement	-	End	12,7
Pneumatic movement	6	Start	15,8
Pneumatic movement	6	End	9,7
Pneumatic movement	7	Start	20,9
Pneumatic movement	7	End	14,8
Pneumatic movement	8	Start	26
Pneumatic movement	8	End	19,9

Ordering example

Product	DTPU	630	POWS
Dimension Ød ₁			
Motor type			