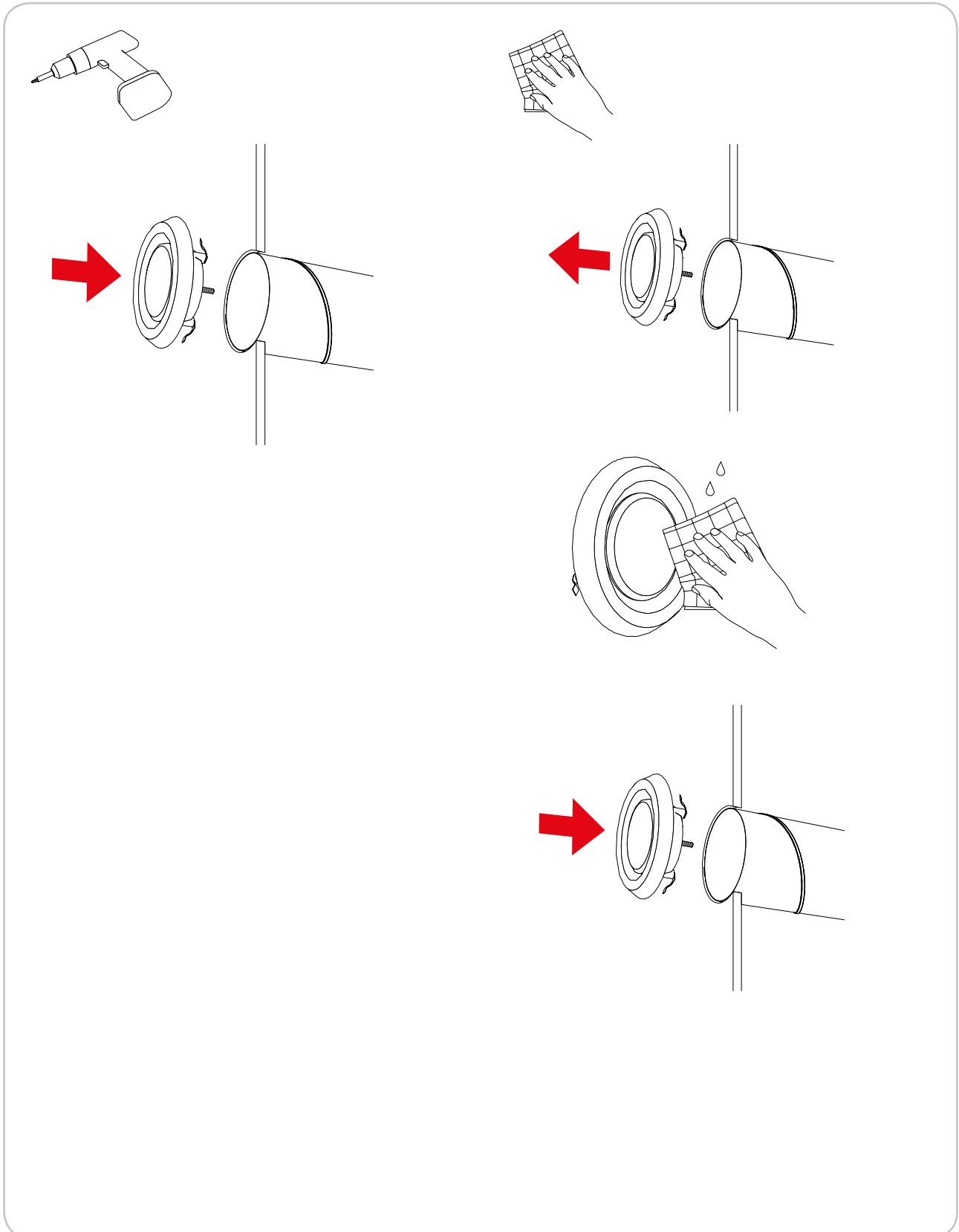




Lindab **Ventiler**

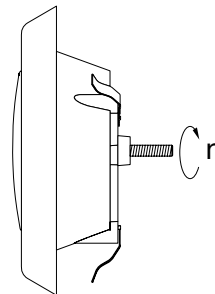
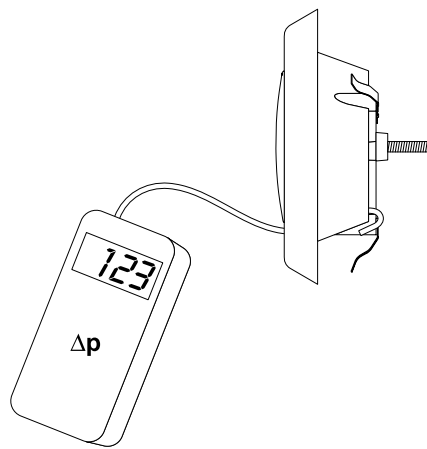
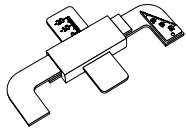
KPF





Lindab Ventiler

KPF



Ø mm	Ventil monteret i	Indstilling n [Antal omdrejninger for åbning]						
		n	0	3	6	9	15	18
100	Kanal Bøjning 90° T-stykke	n	0	3	6	9	15	18
		k	1,54	1,71	1,96	2,48	2,91	3,17
			1,58	1,89	2,20	2,62	2,94	3,39
125	Kanal Bøjning 90° T-stykke	n	0	3	6	9	12	15
		k	1,76	1,99	2,44	2,89	3,31	3,67
			1,82	1,95	2,42	2,74	3,21	3,56
160	Kanal Bøjning 90° T-stykke	n	3	6	9	12	15	18
		k	1,54	2,19	2,78	3,20	3,94	4,46
			1,41	1,97	2,52	3,04	3,63	4,23
200	Kanal Bøjning 90° T-stykke	n	3	6	9	12	15	18
		k	1,77	2,57	3,26	4,23	4,93	5,84
			1,78	2,45	3,26	3,48	4,89	5,14
			-	2,53	3,03	3,79	4,55	5,04

Formler til forholdet imellem
måling af tryk og luftstrøm:

$$q = k \times \sqrt{p_m}$$

$$p_m = (q/k)^2$$

q = volumenstrøm [l/s]
p_m = måletryk [Pa]
k = k-faktor