

Duct suspensions & Support systems



Content – Duct suspensions & Support systems

Duct suspension

Duct suspension



FB.....688

Threaded rod



OSB 60.....690

Rectangular plain washer



S4B691

Hexagonal studding connector



OSM.....691

Eye bolt



EB692

Circular suspension

Duct support



DH.....693
RK.....705

Duct holder



MDH.....695

Suspension rings



UV25697
UV30698



UVH25.....699
UVH30.....700



DRSN.....701
DRSNR.....703

Channels and channel brackets

Supported cantilever



CL.....706
CLS.....706

Channel



RPA707
RPC708

Channel slide nuts



CN709
CNS.....709
CNLS.....710
CNSS.....710

Hammer head bolt



HHB.....711

Hammer top screw



HTS.....711

Channel end cap



CEC712

Content – Duct suspensions & Support systems

Brackets

L-fastener



WCL713

Fastener bracket



WCLT713

Z-fastener



WCZ714

MP fastener



WCMP714

Toggle



VIPPB715

Coil wire



SPTRAD715

Brackets



WCRVG716
 WCVG717
 WCZGM718
 WCLGM719

Beam clamp



BCT720
 BC720

Frame support system



Stand system721

1
2
3
4
5
6
7
8
9
10
11
12
13
14
15
16
17
18

Duct suspension

FB



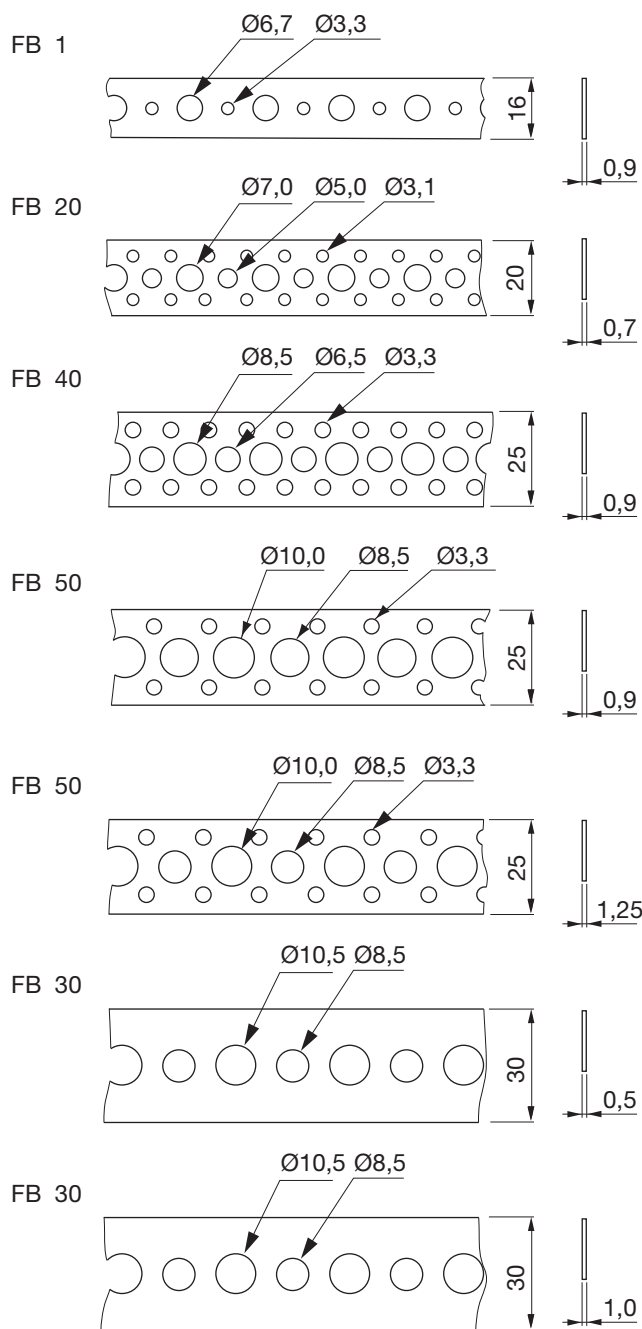
Description

Suspension band

Suspension bands are designed to suspend air ducts. It is easy to cut and bend and allows a quick and economical method of assembly. The perforated suspension steel band is made of steel with assorted holes, which, according to the type selected, allow fixing of threaded rods, threaded clamps, bolts, etc. The small holes can be used with rivets, screws or nails.

Type	Width mm	Thickness mm	Length m	Material
FB 1	16	0,9	10	galvanized
FB 1	16	0,9	25	galvanized
FB 20	20	0,7	25	galvanized
FB 50	25	0,9	25	galvanized
FB 40	25	0,9	25	galvanized
FB 50	25	1,25	25	galvanized
FB 30	30	0,5	25	stainless
FB 30	30	1,0	25	stainless

Dimensions



Ordering example



Duct suspension

FB

Technical data

Max recommended load for different fire classes.

Installation		Ventilation system					Smoke control system
Type	Thickness	R0 no fire class. kg	R15 kg	R30 kg	R45 kg	R60 kg	600 °C 120 min kg
FB20	0,7	20	-	-	-	-	-
FB30	0,5	80	-	-	-	-	-
FB30	1,0	100	100	100	-	-	-
FB40	0,9	80	-	-	-	-	-
FB50	0,9	80	-	-	-	-	-
FB50	1,25	100	50	-	-	-	-

1

2

3

4

5

6

7

8

9

10

11

12

13

14

15

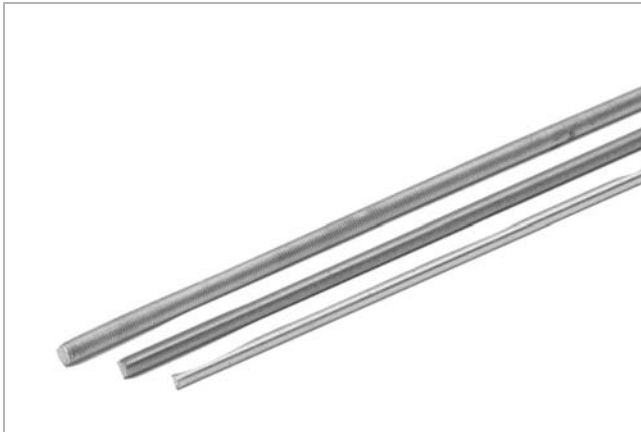
16

17

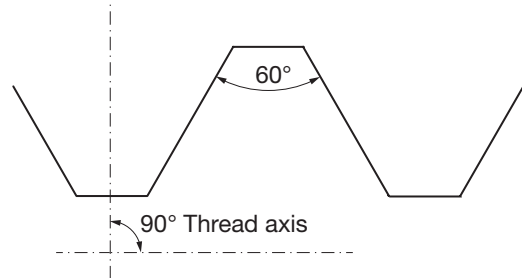
18

Threaded rod

OSB 60



Dimensions



Description

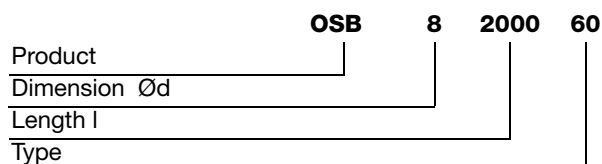
The threaded rod is according to the standard DIN 976-1. That means that the thread angle is 60°. Property class: 4.8 Surface finish: Electro zinc plated

Dimension	Length [mm]	Type	No fire classification		Fire classification	
			Tensile strength	Yield strength	R30	R60
			At safety factor 3 [kN]	Recommended max load at safety factor 3 [kN]	Recommended max load at fire classified installations [kN]	
M8	1000	60	5,1	4,1	1,0	–
M8	2000	60	5,1	4,1	1,0	–
M10	1000	60	8,1	6,6	1,0	1,0
M10	2000	60	8,1	6,6	1,0	1,0
M12	1000	60	11,8	9,6	1,0	1,0
M12	2000	60	11,8	9,6	1,0	1,0

Max recommended load for different fire classes.

Installation Dim	Ventilation system					Smoke control system 600 °C 120 min kg
	R0 no fire class. kg	R15 kg	R30 kg	R45 kg	R60 kg	
M6	100	–	–	–	–	–
M8	100	100	100	–	–	100
M10	158	100	100	100	100	158
M12	158	100	100	100	100	158

Ordering example



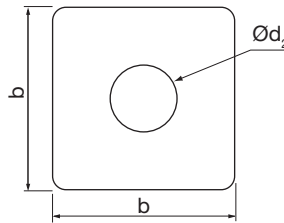
Duct suspension

S4B

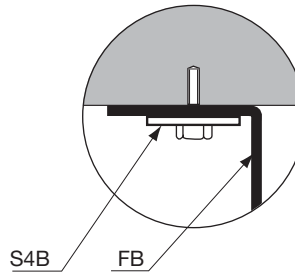
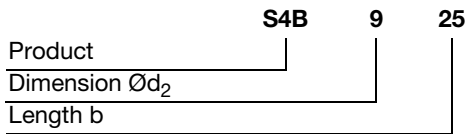
Rectangular plain washer

Surface finish: Hot dipped galvanized.

Dim Ød ₂	b mm	Thickness mm
9	25	3
11	30	3



Ordering example



OSM

Hexagonal studding connector

Used together with threaded rod to reduce wastage to a minimum.

Threaded in both ends with a stop in the middle.

Surface finish: Electro zinc plated.

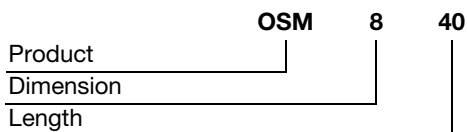
Dim	Length mm
M6	30
M8	40
M10	50
M12	50



Max recommended load for different fire classes.

Installation		Ventilation system					Smoke control system
Dim	Length	R0 no fire class. kg	R15 kg	R30 kg	R45 kg	R60 kg	600 °C 120 min kg
M6	30	100	-	-	-	-	-
M8	25	100	100	100	-	-	100
M8	40	100	100	100	-	-	100
M10	50	100	158	100	100	100	158
M12	50	100	158	100	100	100	158

Ordering example



1
2
3
4
5
6
7
8
9
10
11
12
13
14
15
16
17
18

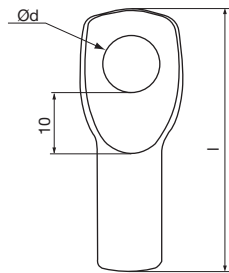
Duct suspension

EB

Eye bolt

Surface finish: Electro zinc plated.

Dim	Length mm	Ød mm
M8	46	8,5
M10	51	10,5
M12	61	12,5



Max recommended load for different fire classes.

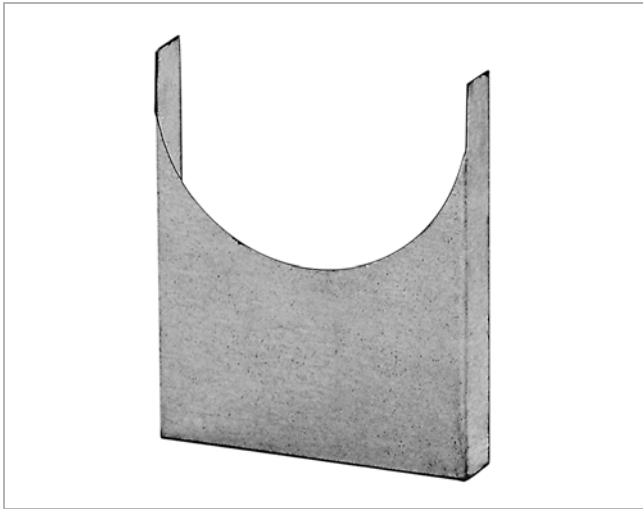
Installation	Ventilation system					Smoke control system
	R0 no fire class. kg	R15 kg	R30 kg	R45 kg	R60 kg	600 °C 120 min kg
M8	100	100	100	–	–	100
M10	158	100	100	100	100	158
M12	158	100	100	100	100	158

Ordering example

Product	EB	8
Dimension		

Duct holder

DH



Description

Used to fix ducts standing on joists.

Is provided with fixing holes in the base.

Varying height can be arranged by installing two duct supports, one inside the other. These can be locked with two self-tapping screws on each short side.

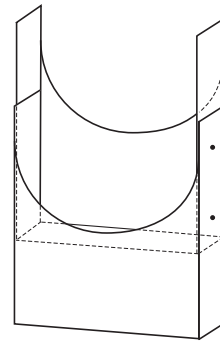
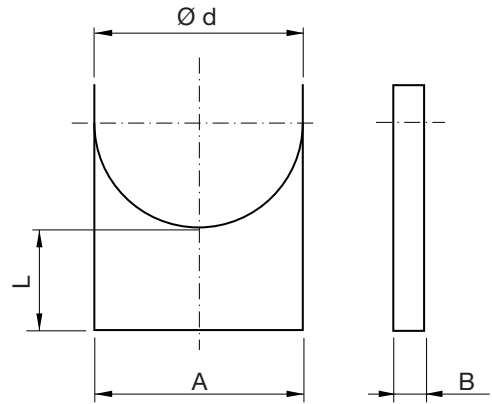
The L dimension can then vary:

for \varnothing 63–250 between 100 and 200 mm,

for \varnothing 315–630 between 100 and 250 mm.

Can also be delivered in additional sizes.

Dimensions



$\varnothing d$ nom	A mm	B mm	L mm	m kg
63	66	30	100	0,09
63	66	25	75	0,08
80	83	30	100	0,11
80	83	25	75	0,09
100 *	103	30	100	0,12
100 *	103	25	75	0,10
125 *	128	30	100	0,15
125 *	128	25	75	0,12
160 *	163	30	100	0,18
160 *	163	25	75	0,15
200 *	203	30	100	0,29
200 *	203	25	75	0,25
250 *	253	30	100	0,35
250 *	253	25	75	0,30
315	318	30	100	0,46
315	318	25	75	0,39
400	403	30	100	0,59
400	403	25	75	0,50
500	503	30	100	0,76
500	503	25	75	0,65
630	633	30	100	1,02
630	633	25	75	0,87

* Reinforced

Product	DH	160	100
Dimension $\varnothing d$			
Height L			

- 1
- 2
- 3
- 4
- 5
- 6
- 7
- 8
- 9
- 10
- 11
- 12
- 13
- 14
- 15
- 16
- 17
- 18

Duct holder

DH

Technical data

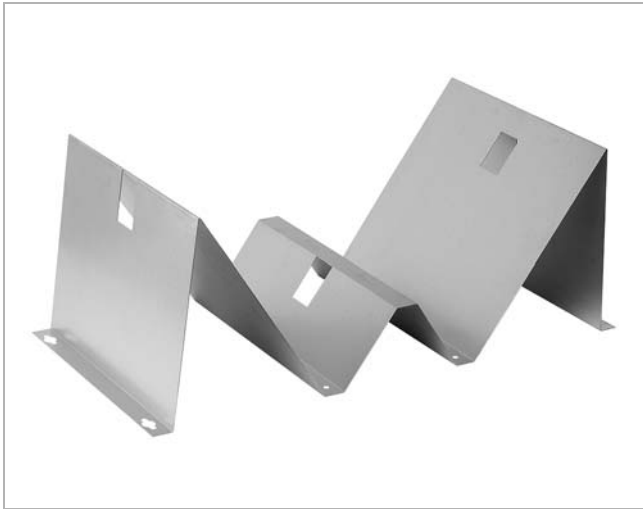
Max recommended load for different fire classes.

Installation	Ventilation system					Smoke control system
	R0 no fire class. kg	R15 kg	R30 kg	R45 kg	R60 kg	
Dim 63-630	50	-	-	-	-	600 °C 120 min kg -

- 1
- 2
- 3
- 4
- 5
- 6
- 7
- 8
- 9
- 10
- 11
- 12
- 13
- 14
- 15
- 16
- 17
- 18

Duct holder

MDH



Description

The folded shape of the duct holder and its multiple of fixation points makes the duct system very firmly attached.

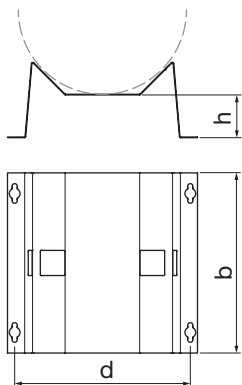
The duct holder is suitable for all types of duct mounting, i.e. vertical and horizontal onto a wall, hanging under a ceiling and standing on a floor.

The screw holes are easy to access and shaped like double key-holes which makes the mounting fast and easy.

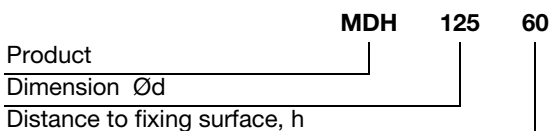
The duct is fastened with help of suspension rings UV30 or UVH30, which are threaded through the duct holder.

Dimensions

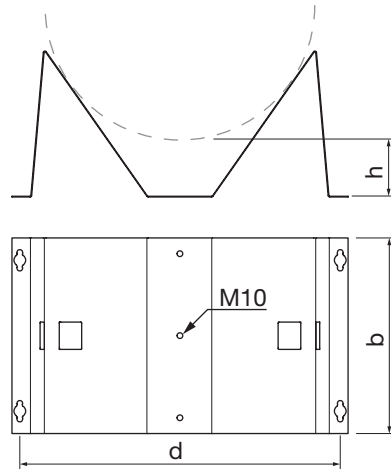
Ø 100–300



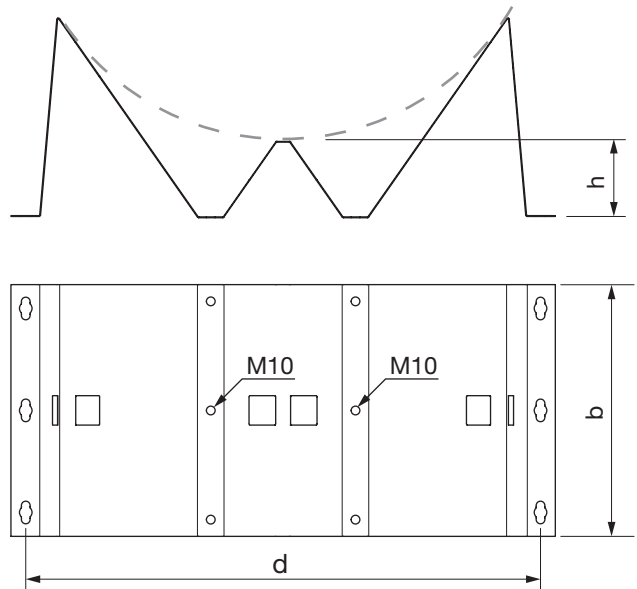
Ordering example



Ø 315–600



Ø 630–1250



Ød nom	b mm	d mm	h mm	m kg
100	150	125	60	0,29
112	150	136	60	0,31
125	150	149	60	0,33
150	150	168	60	0,36
160	150	175	60	0,37
180	150	197	60	0,41
200	240	212	60	0,72
224	240	229	60	0,76
250	240	249	60	0,81
280	240	270	60	0,86
300	240	285	60	0,90
315	240	341	90	1,39
355	240	375	90	1,49
400	240	414	90	1,60
450	240	456	90	1,72

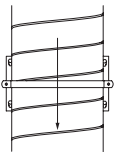
Duct holder

MDH

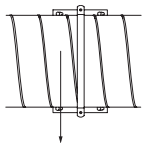
Ød nom	b mm	d mm	h mm	m kg
500	240	499	90	1,85
560	240	550	90	2,00
600	240	585	90	2,10
630	300	614	90	2,91
710	300	682	90	3,16
800	300	759	90	3,44
900	300	845	90	3,75
1000	300	931	90	4,08
1120	300	1134	90	4,47
1250	300	1149	90	4,90

Technical data

Max recommended load for different fire classes.



Installation	Ventilation system					Smoke control system
	R0 no fire class. kg	R15 kg	R30 kg	R45 kg	R60 kg	
Dim						600 °C 120 min kg
100-300	100	-	-	-	-	-
315-600	130	-	-	-	-	-
630-1250	160	-	-	-	-	-



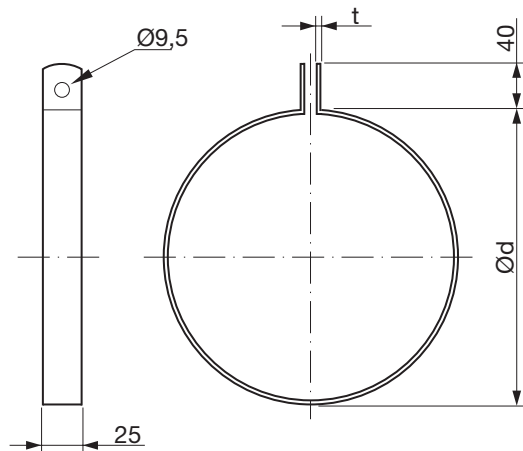
Installation	Ventilation system					Smoke control system
	R0 no fire class. kg	R15 kg	R30 kg	R45 kg	R60 kg	
Dim						600 °C 120 min kg
100-300	50	-	-	-	-	-
315-800	100	-	-	-	-	-
900-1120	75	-	-	-	-	-

Suspension rings

UV25



Dimensions



Description

For suspension of circular ducting. For insulated duct it is recommended that the suspension ring is mounted inside the insulation.

Ordering example

Product code	UV25	200
Dimension Ød		

Ød nom	t mm	m kg
80	2,0	0,13
100	2,0	0,15
125	2,0	0,18
160	2,0	0,22
200	2,0	0,27
250	2,0	0,33
315	2,0	0,41
355	2,0	0,46
400	2,0	0,52
450	2,0	0,58
500	2,0	0,64
560	2,0	0,71
630	2,0	0,80

*) For insulated ducts.
Can also be delivered in additional sizes.

Technical data

Max recommended load for different fire classes.

Installation	Ventilation system					Smoke control system
	R0 no fire class.	R15	R30	R45	R60	600 °C 120 min
Dim	kg	kg	kg	kg	kg	kg
80-315	80	80	80	80	80	80
400-1250	80	-	-	-	-	-

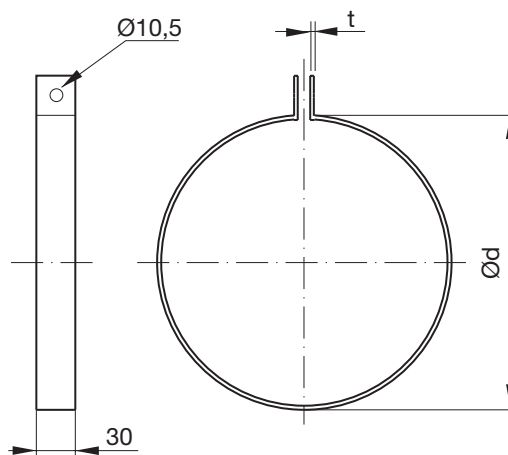
- 1
- 2
- 3
- 4
- 5
- 6
- 7
- 8
- 9
- 10
- 11
- 12
- 13
- 14
- 15
- 16
- 17
- 18

Suspension rings

UV30



Dimensions



Description

For suspension of circular ducting. For insulated duct it is recommended that the suspension ring is mounted inside the insulation.

Ordering example

Product code	UV30	200
Dimension Ød		

Ød nom	t mm	m kg
63	1,25	0,09
80 *	1,25	0,11
100 *	1,25	0,13
125 *	1,25	0,16
160 *	1,50	0,20
200 *	1,50	0,24
250 *	1,50	0,30
315 *	1,50	0,36
400 *	2,00	0,47
500 *	2,00	0,65
630 *	2,00	0,73
800	3,00	0,92
1000	3,00	1,15
1250	3,00	1,43

Can also be delivered in additional sizes.
* can also be delivered in stainless steel 4404 or aluminiumzink.

Technical data

Max recommended load for different fire classes.

Installation	Ventilation system					Smoke control system
	R0 no fire class.	R15	R30	R45	R60	
Dim	kg	kg	kg	kg	kg	600 °C 120 min kg
63-150	80	80	80	80	80	80
160-355	85	85	85	85	85	80
400-710	90	90	90	90	90	80
800-1250	100	100	100	100	100	100

Suspension rings

UVH25

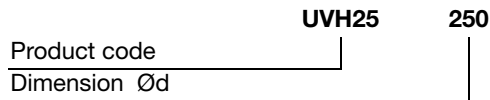


Description

For suspension of circular ducting. For insulated duct it is recommended that the suspension ring is mounted inside the insulation.

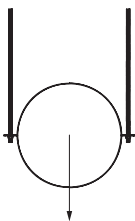
N.B. Is sold in pairs.

Ordering example

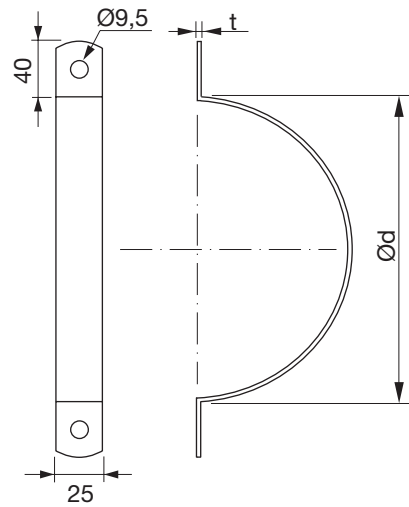


Technical data

Max recommended load for different fire classes.



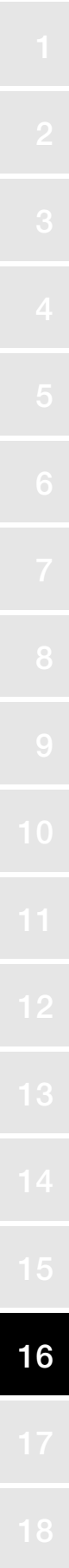
Dimensions



Ød nom	t mm	m kg
80	2,0	0,20
100	2,0	0,20
125	2,0	0,20
160	2,0	0,20
200	2,0	0,30
250	2,0	0,30
315	2,0	0,40
355	2,0	0,50
400	2,0	0,50
450	2,0	0,60
500	2,0	0,60
560	2,0	0,70
630	2,0	0,80

Can also be delivered in additional sizes.

Installation	Ventilation system					Smoke control system
	R0 no fire class.	R15	R30	R45	R60	
Dim	kg	kg	kg	kg	kg	600 °C 120 min kg
80-355	160	160	160	160	160	160
400-630	160	-	-	-	-	160

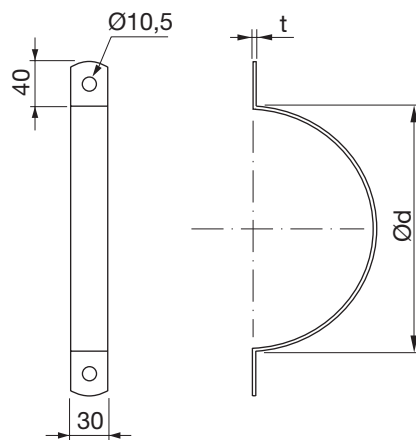


Suspension rings

UVH30



Dimensions

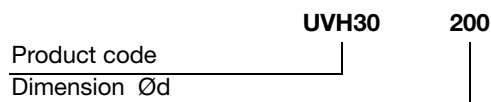


Description

For suspension of circular ducting. For insulated duct it is recommended that the suspension ring is mounted inside the insulation.

N.B Galvanized UVH30 is sold in pairs, stainless steel and aluminiumzink. UVH30 is sold by piece. The weight in the table are per pair.

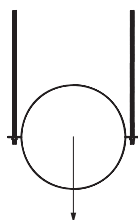
Ordering example



Ød nom	t mm	m kg
80	1,25	0,10
100	1,25	0,12
125	1,25	0,16
160	1,50	0,22
200 *	1,50	0,26
250 *	1,50	0,30
315 *	1,50	0,38
400 ***	2,00	0,64
500 ***	2,00	0,80
630 ***	2,00	0,98
800 ***	3,00	1,84
1000 *	3,00	2,30
1250 *	3,00	2,84

Technical data

Max recommended load for different fire classes.



Can also be delivered in additional sizes.
 * can also be delivered in stainless steel 4404.
 ** can also be delivered in aluminiumzink.

Installation	Ventilation system					Smoke control system
	R0 no fire class.	R15	R30	R45	R60	
Dim	kg	kg	kg	kg	kg	600 °C 120 min kg
80-125	165	165	165	165	165	165
160-355	170	170	170	170	170	170
400-710	180	180	180	180	180	180
800-1250	200	200	200	200	200	200

Circular suspension

DRSN



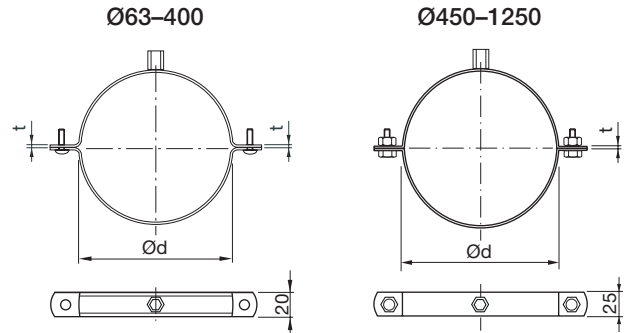
Description

For suspension of circular ducting.

Combined connection nut M8/M10 and slotted quick closure for Ø 63–400.



Dimensions



Ø63–400

With slotted quick closure.
With screw PH3 M6×20.
Connection nut M8+M10.

Ø450–1250

With Ø 10 hole.
With bolt and nut H17 M10×30.
Connection nut M8+M10.

Ød nom	t mm	m kg
63	1,5	0,12
80	1,5	0,13
100	1,5	0,15
125	1,5	0,17
140	1,5	0,19
150	1,5	0,19
160	1,5	0,20
180	1,5	0,22
200	1,5	0,24
224	1,5	0,26
250	1,5	0,28
280	1,5	0,32
300	1,5	0,34
315	1,5	0,36
355	1,5	0,41
400	1,5	0,45
450	2,5	0,83
500	2,5	0,91
560	2,5	1,00
600	2,5	1,06
630	2,5	1,10
710	2,5	1,36
800	2,5	1,49
900	2,5	1,64
1000	2,5	1,82
1120	2,5	2,00
1250	2,5	2,20

Ordering example

Product code **DRSN**
Dimension Ød **250**

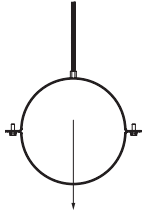


Circular suspension

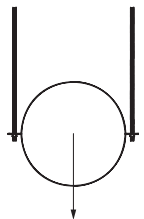
DRSN

Technical data

Max recommended load for different fire classes.



Installation	Ventilation system					Smoke control system
	R0 no fire class. kg	R15 kg	R30 kg	R45 kg	R60 kg	
Dim						600 °C 120 min kg
63-600	65	-	-	-	-	-
630-1250	65	-	-	-	-	-



Installation	Ventilation system					Smoke control system
	R0 no fire class. kg	R15 kg	R30 kg	R45 kg	R60 kg	
Dim						600 °C 120 min kg
450-1250	160	-	-	-	-	158

Circular suspension

DRSNR



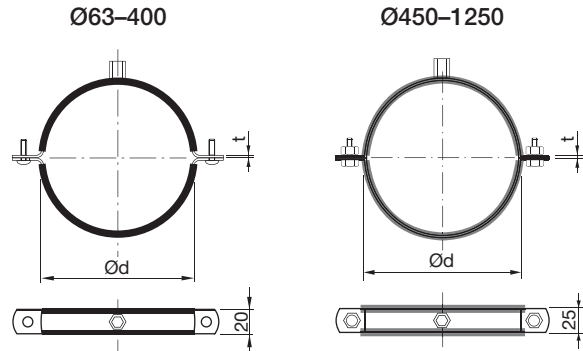
Description

For suspension of circular ducting.

With vibration-damping internal rubber lining. Combined connection nut M8/M10 and slotted quick closure for Ø 63–400.



Dimensions



Ø63–400

With slotted quick closure.
With screw PH3 M6×20.
Connection nut M8+M10.

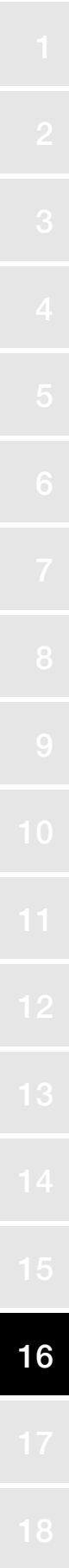
Ø450–1250

With Ø 10 hole.
With bolt and nut H17 M10×30.
Connection nut M8+M10.

Ød nom	t mm	m kg
63	1,5	0,14
80	1,5	0,17
100	1,5	0,19
125	1,5	0,23
140	1,5	0,25
150	1,5	0,26
160	1,5	0,27
180	1,5	0,30
200	1,5	0,32
224	1,5	0,35
250	1,5	0,43
280	1,5	0,47
300	1,5	0,50
315	1,5	0,52
355	1,5	0,59
400	1,5	0,65
450	2,5	1,03
500	2,5	1,13
560	2,5	1,25
600	2,5	1,30
630	2,5	1,40
710	2,5	1,70
800	2,5	1,80
900	2,5	2,00
1000	2,5	2,20
1120	2,5	2,40
1250	2,5	2,70

Ordering example

Product code DRSNR 250
Dimension Ød

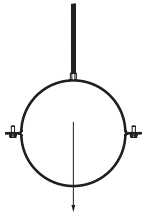


Circular suspension

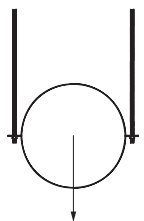
DRSNR

Technical data

Max recommended load for different fire classes.



Installation	Ventilation system					Smoke control system
	R0 no fire class. kg	R15 kg	R30 kg	R45 kg	R60 kg	
Dim						600 °C 120 min kg
63-600	65	-	-	-	-	-
630-1250	65	-	-	-	-	-



Installation	Ventilation system					Smoke control system
	R0 no fire class. kg	R15 kg	R30 kg	R45 kg	R60 kg	
Dim						600 °C 120 min kg
450-1250	160	-	-	-	-	-

Duct holder

RK



Description

Hot dip galvanized duct holder with foot.

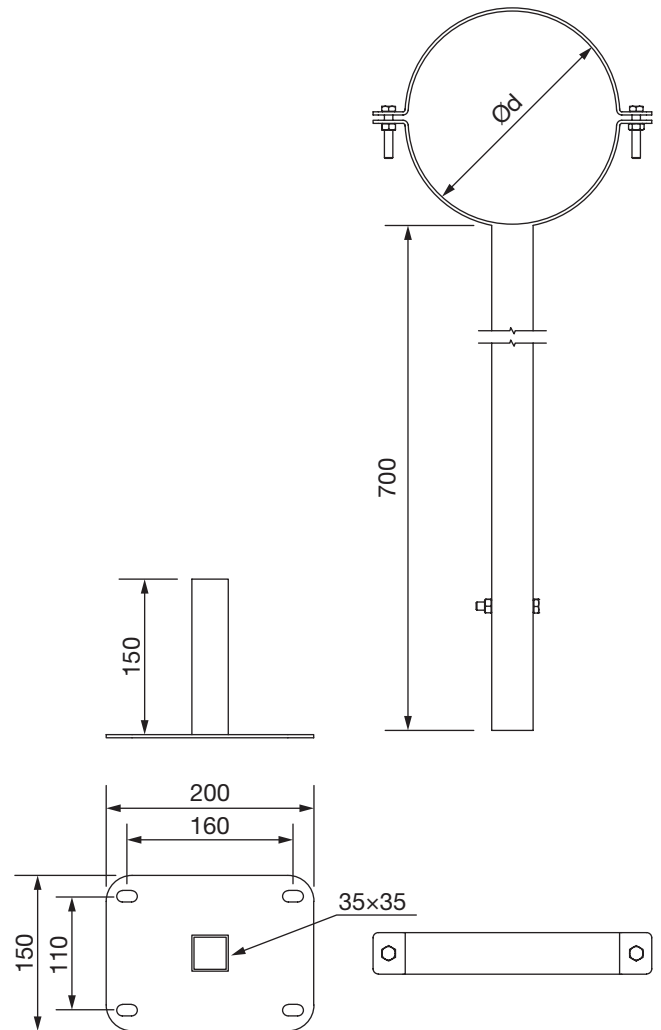
The ring is joined with two M8 bolts and nuts.

The leg is joined with a M8 bolt and nut.

The foot has four 10×17 mm fastening holes.

The leg can be removed from the foot and be shortened to desired length. Is delivered assembled.

Dimensions



Ød nom	Ring material mm	m kg
100	40×2	2,60
125	40×2	2,70
160	40×3	3,20
200	40×3	3,40
250	40×3	3,50
315	40×3	3,70
400	40×3	4,00
500	40×4	4,40
630	40×4	5,80
800	40×4	6,60
1000	40×4	6,80
1250	40×4	7,70

Ordering example



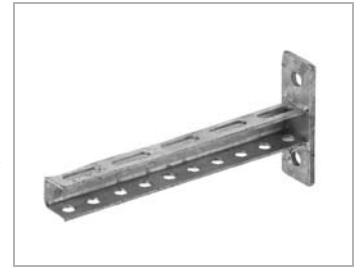
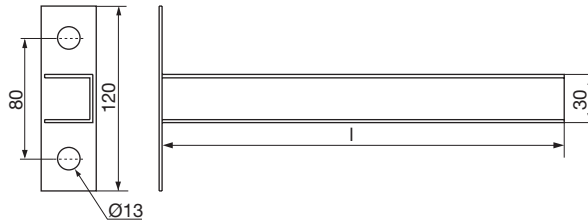
- 1
- 2
- 3
- 4
- 5
- 6
- 7
- 8
- 9
- 10
- 11
- 12
- 13
- 14
- 15
- 16
- 17
- 18

Channels and channel brackets

CL

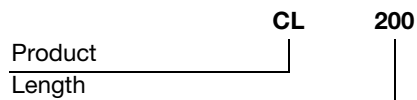
Cantilever

Material: Hot dipped galvanized.
To be fixed of walls, floors and ceilings as an assembly profile.



Length mm	m kg
150	0,40
200	0,50
250	0,58
300	0,66
400	0,82

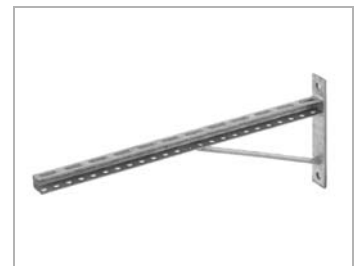
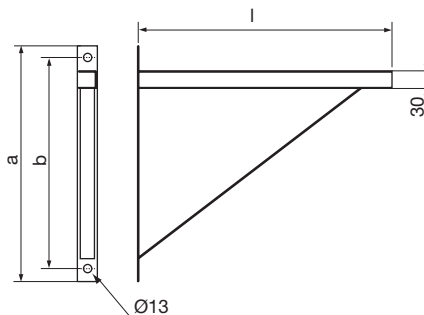
Ordering example



CLS

Supported cantilever

Material: Hot dipped galvanized.
To be fixed of walls, floors and ceilings as an assembly profile. The diagonal support bar makes it suitable for heavy loads.



Length mm	a mm	b mm	m kg
400	200	160	1,13
500	200	160	1,32
600	200	160	1,50
800	345	305	2,20
1000	345	305	2,55
1300	345	305	3,10

Ordering example



Channels and channel brackets

RPA

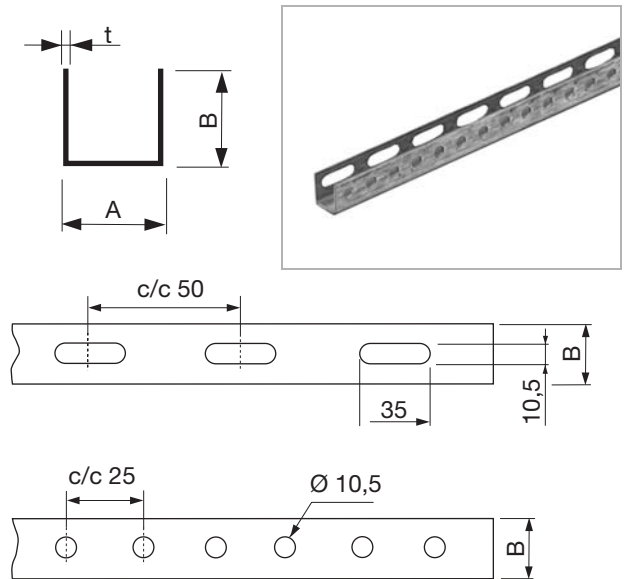
Channel

Surface finish: Electro zinc plated.

Dim		Length mm	SLOT/ PLAI	Thickness mm
A	B			
30	30	2000	SLOT	3
30	30	2000	SLOT	2

Ordering example

Product	RPA	3030	2000	SLOT	3
Dimension A x B					
Length					
Type					
Thickness					



- 1
- 2
- 3
- 4
- 5
- 6
- 7
- 8
- 9
- 10
- 11
- 12
- 13
- 14
- 15
- 16
- 17
- 18

Channels and channel brackets

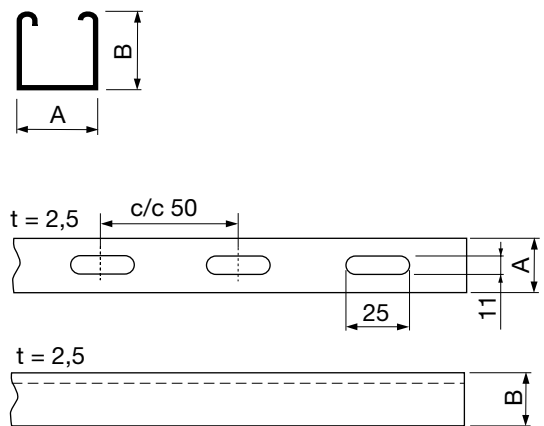
RPC

Channel

Surface finish: Electro zinc plated.
Available as plain or slotted.



Dim		Length mm	SLOT/ PLAI	Thickness
A	B			t mm
41	21	3000	PLAI	1,6
41	21	3000	PLAI	2,5
41	21	3000	SLOT	1,6
41	21	3000	SLOT	2,5
41	21	6000	PLAI	1,6
41	21	6000	PLAI	2,5
41	21	6000	SLOT	1,6
41	21	6000	SLOT	2,5
41	41	3000	PLAI	1,6
41	41	3000	PLAI	2,5
41	41	3000	SLOT	1,6
41	41	3000	SLOT	2,5
41	41	6000	PLAI	1,6
41	41	6000	PLAI	2,5
41	41	6000	SLOT	1,6
41	41	6000	SLOT	2,5



Ordering example

	RPC	4121	3000	SLOT	2,5
Product					
Dimension A x B					
Length					
Type					
Thickness					

Channels and channel brackets

Channel slide nuts

Channel slide nuts and springs are self aligning and are specially manufactured to complement the range of RPC channels. The slide nut can be moved along the channel for ease of alignment whilst the springs tension the nut against the internal channel lips to facilitate installation. In addition to the shape of the slide nuts prevents turning inside the channel eliminating the need to grip the nut whilst inserting bolts or threaded rod.

CN

Channel nut, without spring

Dim
8
10
12



Max recommended load for different fire classes.

Installation	Ventilation system	Smoke control system
	R0 no fire class. kg	600 °C 120 min kg
Dim 8, 10, 12	100	-

Ordering example

Product	CN	8
Dimension		

CNS

Channel nut with spring

Dim
8
10
12



Ordering example

Product	CNS	8
Dimension		

1

2

3

4

5

6

7

8

9

10

11

12

13

14

15

16

17

18

Channels and channel brackets

1

CNLS

Channel nut long spring

Dim
8
10
12



2

3

4

Max recommended load for different fire classes.

Installation	Ventilation system	Smoke control system
Dim	R0 no fire class. kg	600 °C 120 min kg
8, 10, 12	100	–

5

6

Ordering example

Product	CNLS	8
Dimension		

7

8

CNSS

Channel nut short spring

Dim
8
10
12



9

10

11

Max recommended load for different fire classes.

Installation	Ventilation system	Smoke control system
Dim	R0 no fire class. kg	600 °C 120 min kg
8, 10, 12	100	–

12

13

Ordering example

Product	CNSS	8
Dimension		

14

15

16

17

18

Channels and channel brackets

HHB

Hammer head bolt

Dim	Length mm
8	30
10	30
12	30
8	40
10	40
12	40



Max recommended load for different fire classes.

Installation	Ventilation system	Smoke control system
Dim	R0 no fire class. kg	600 °C 120 min kg
8, 10, 12	100	-

Ordering example

	HHB	8	30
Product			
Dimension			
Length			

HTS

Hammer top screw

Dim	Length mm
8	30
10	30
12	30
8	40
10	40
12	40



Max recommended load for different fire classes.

Installation	Ventilation system	Smoke control system
Dim	R0 no fire class. kg	600 °C 120 min kg
8, 10, 12	100	-

Ordering example

	HTS	8	30
Product			
Dimension			
Length			

1

2

3

4

5

6

7

8

9

10

11

12

13

14

15

16

17

18

Channels and channel brackets

1

CEC

Channel end cap

2

for channel 4141
for channel 4121

3



4

Ordering example

5



6

7

8

9

10

11

12

13

14

15

16

17

18

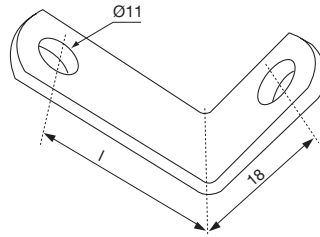
Brackets

WCL

L-fastener

Surface finish: Electro zinc plated.

Dim	Length l mm	Thickness mm
25	35	4
25	60	4
25	85	4
25	110	4



Max recommended load for different fire classes.

Installation	Ventilationsystem					Smoke control system
	R0 no fire class. kg	R15 kg	R30 kg	R45 kg	R60 kg	600 °C 120 min kg
Dim						
25	100	100	100	100	100	100

Ordering example

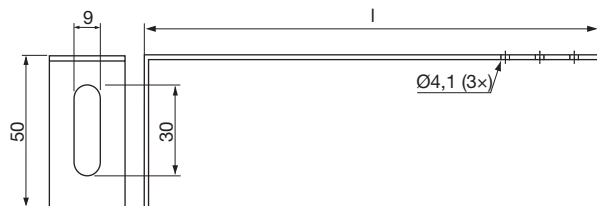
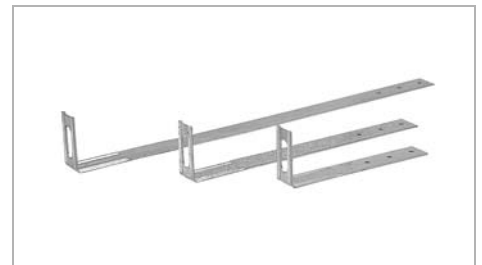
Product code	WCL	25	35
Dimension			
Length			

WCLT

Fastening bracket

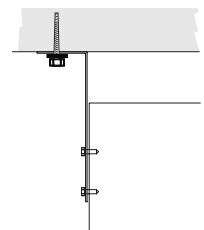
Surface finish: Electro zinc plated.

Dim	Length l mm	Thickness mm
25	150	1,5
25	250	1,5
25	400	1,5



Max recommended load for different fire classes.

Installation	Ventilationsystem					Smoke control system
	R0 no fire class. kg	R15 kg	R30 kg	R45 kg	R60 kg	600 °C 120 min kg
Dim						
25	40	-	-	-	-	-



Ordering example

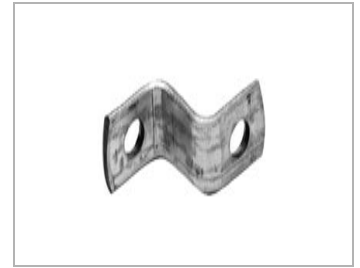
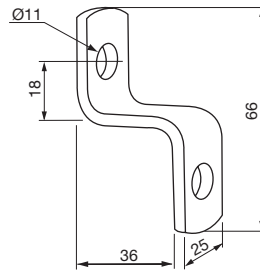
Product code	WCLT	25	150
Dimension			
Length			

Brackets

WCZ

Z-fastener

Surface finish: Electro zinc plated.



Dim	Thickness mm
25	4

Max recommended load for different fire classes.

Installation	Ventilationsystem					Smoke control system
	R0 no fire class. kg	R15 kg	R30 kg	R45 kg	R60 kg	
Dim						600 °C 120 min kg
25	100	100	100	100	100	100

Ordering example

Product code WCZ 25
Dimension

WCMP

MP-fastener

For hanging in corrugated sheet metal roofing. The fastener fits wave bottoms of width 40–150 mm. The fastener angle has 3 holes of Ø4,3 mm, intended for 4 mm blind rivet or sheet metalscrew B8.

The fastener can handle a weight of 125 kg without any deformation.



Dim	Length mm
40	60
60	95
90	150

Ordering example

Product code WCMP 60
Dimension

Brackets

VIPPB

Toggle

For hanging in corrugated sheet metal roofing.

Dim	Length mm
8	100

Ordering example

	VIPPB	8
Product code		
Dimension		



SPTRAD

Coil wire

Galvanized insulation thread.

Dim
55
75

Ordering example

	SPTRAD	55
Product code		
Dimension		



1

2

3

4

5

6

7

8

9

10

11

12

13

14

15

16

17

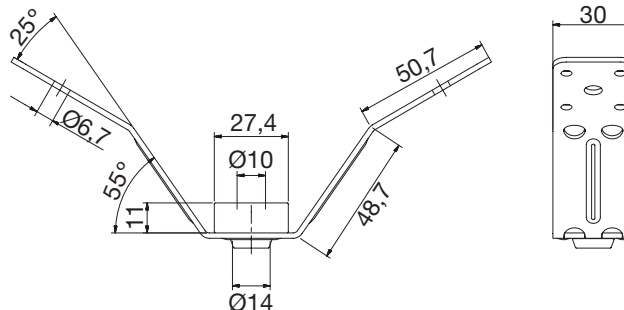
18

Brackets

WCRVG



Dimensions



Description

RV suspension profile with shock absorbing rubber

For suspension of ventilation ducts with the use of threaded rods and self-drilling screws or blind rivets. Allows fixing against trapeze type ceilings.

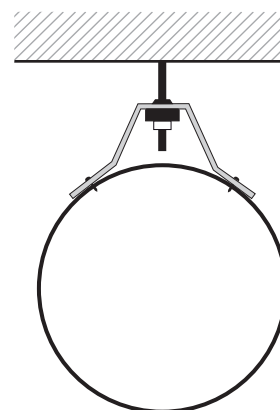
With a rubber element that prevents transmissions of vibrations.

Material: Galvanized steel

Thickness: ... 2 mm

Ordering example

Product WCRVG



Technical data

Max recommended load for different fire classes.

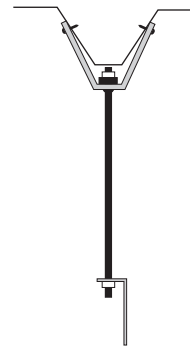
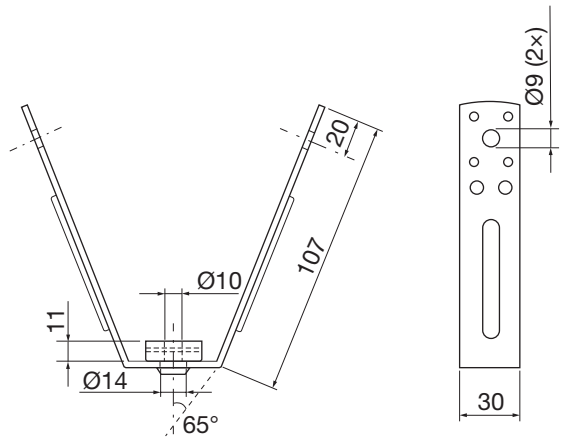
Installation	Ventilation system					Smoke control system
	R0 no fire class.	R15	R30	R45	R60	
Dim	kg	kg	kg	kg	kg	600 °C 120 min kg
8	50	-	-	-	-	-

Brackets

WCVG



Dimensions



Description

V suspension profile with shock absorbing rubber

For suspension of ventilation ducts with the use of threaded rods and self-drilling screws or blind rivets. Allows fixing against trapeze type ceilings.

With a rubber element that prevents transmissions of vibrations.

Material: Galvanized steel
 Thickness: 2 mm

Ordering example

Product WCVG

Technical data

Max recommended load for different fire classes.

Installation	Ventilation system					Smoke control system
	R0 no fire class.	R15	R30	R45	R60	
Dim	kg	kg	kg	kg	kg	600 °C 120 min kg
	65	-	-	-	-	-

- 1
- 2
- 3
- 4
- 5
- 6
- 7
- 8
- 9
- 10
- 11
- 12
- 13
- 14
- 15
- 16
- 17
- 18

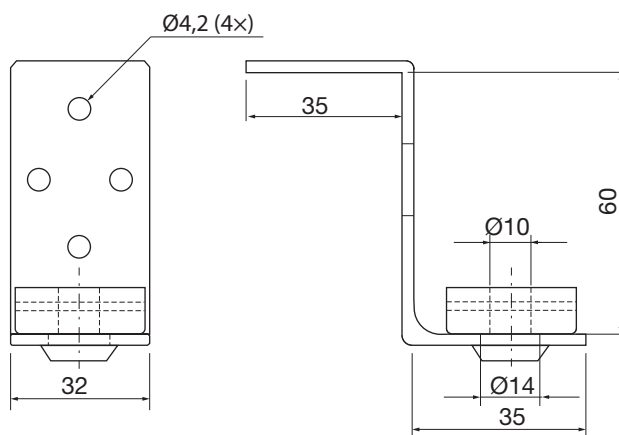
Brackets

WCZGM

- 1
- 2
- 3
- 4
- 5
- 6
- 7
- 8
- 9
- 10
- 11
- 12
- 13
- 14
- 15
- 16
- 17
- 18



Dimensions



Description

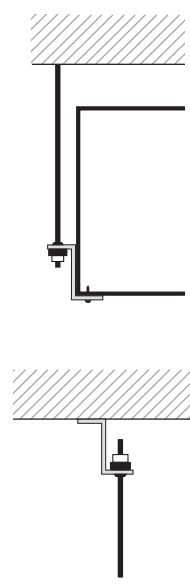
Z suspension profile with shock absorbing rubber

For suspension of ventilation ducts.

Easy height adjustment by using threaded rod and hex nuts. Fixing with blind rivets or self drilling screws.

With a rubber element that prevents transmissions of vibrations.

Material: Galvanized steel
Thickness: 2 mm



Ordering example

Product _____ **WCZGM**

Technical data

Max recommended load for different fire classes.

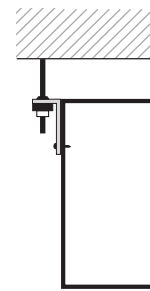
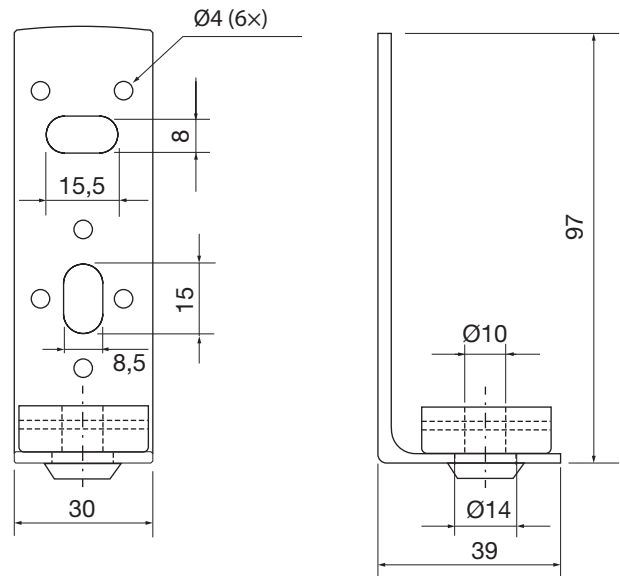
Installation	Ventilation system					Smoke control system
	R0 no fire class.	R15	R30	R45	R60	
Dim	kg	kg	kg	kg	kg	600 °C 120 min kg
	80	-	-	-	-	-

Brackets

WCLGM



Dimensions



Description

L suspension profile with shock absorbing rubber

For suspension of ventilation ducts.

Easy height adjustment by using threaded rod and hex nuts. Fixing with blind rivets or self drilling screws.

With a rubber element that prevents transmissions of vibrations.

Material: Galvanized steel

Thickness: 2 mm

Ordering example

Product WCLGM

Technical data

Max recommended load for different fire classes.

Installation	Ventilation system					Smoke control system
	R0 no fire class.	R15	R30	R45	R60	
Dim	kg	kg	kg	kg	kg	600 °C 120 min kg
	80	-	-	-	-	-

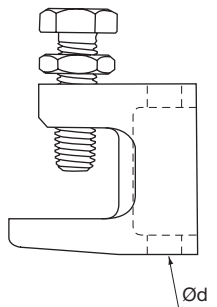
- 1
- 2
- 3
- 4
- 5
- 6
- 7
- 8
- 9
- 10
- 11
- 12
- 13
- 14
- 15
- 16
- 17
- 18

Brackets

1

Beam clamp

To fix on to beams without welding or drilling. With hexagon head screw DIN 933 8.8, threaded end with cup point according to EN ISO 4753 and locknut DIN 439. Available as threaded (BCT) or not threaded (BC). Material: Body made of malleable cast iron, zinc plated, casting tolerance acc. to DIN 1684 GTA / 17.



2

3

BCT

Threaded rod hole.

Dim Ød
M 8
M 10
M 12

5

6

7

BC

Not threaded rod hole.

Dim Ød
8
10
12

8

9

Max recommended load for different fire classes.

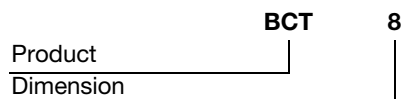
Installation	Ventilationsystem					Smoke control system
	R0 no fire class. kg	R15 kg	R30 kg	R45 kg	R60 kg	600 °C 120 min kg
Dim						
8, 10, 12	100	-	-	-	-	-

10

11

12

Ordering example



13

14

15

16

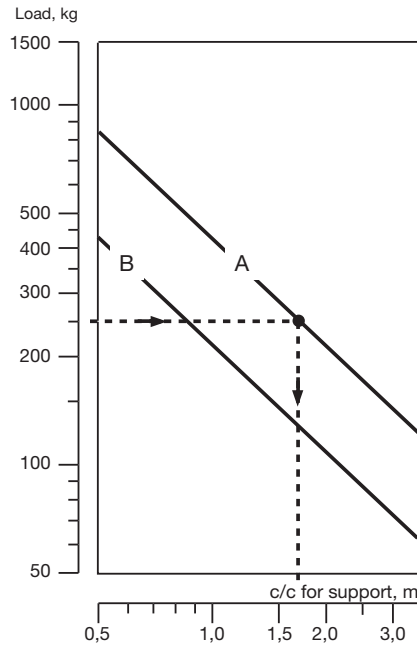
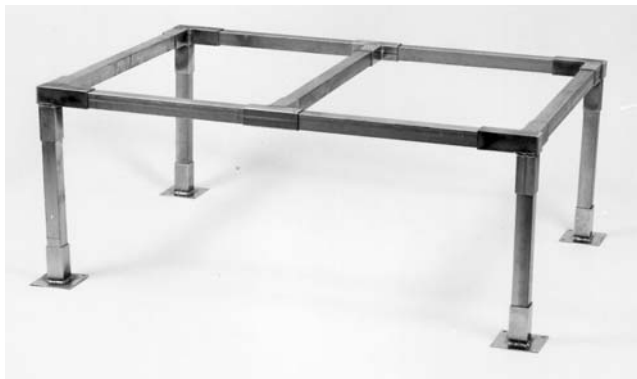
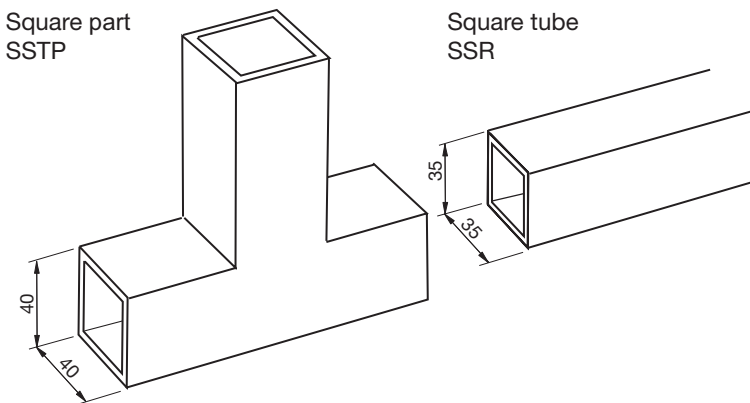
17

18

Frame support system

Stand system

Consisting of square tubes and a number of parts which are used to create a range of different structures. This stand system is made up of square tubes in accordance with DIN 2395 and materials in accordance with SIS 1312. The load diagram indicates the maximum permissible load with regard to flex sensing and does not take deflection into account. The diagram indicates the maximum permissible load for different distances between the supporting legs without exceeding the limit load in accordance with the Swedish Fatigue Design Code for Welded Structures, StBK-N1, static load. This load diagram is applicable to all horizontal tubes with their associated supports, provided that there are no lateral forces.



A = Extended, evenly distributed static load – tubes 35 x 35 x 1,5
 B = Centrally applied static spot load – 35 x 35 x 1,5

Example

Load 250 kg, distributed evenly
 Stand tube 35 x 35 gives a max c/c between supporting legs of 1,7 m

SSR

Square tube

Surface finish: Hot dipped galvanized.

Dim mm	Thickness mm	Length mm
35x35	1,5	3000



Ordering example

Product SSR

1
2
3
4
5
6
7
8
9
10
11
12
13
14
15
16
17
18

Frame support system

1

SSTP

T-piece

Surface finish: Electro zinc plated.

Dim mm	Thickness mm
40x40	2,0

Ordering example

SSTP

Product



2

3

4

5

SSF

Support foot

Surface finish: Electro zinc plated.

Dim mm	Thickness mm
40x40	2,0

Ordering example

SSF

Product



6

7

8

9

SSFA

Adjustable foot

Surface finish: Electro zinc plated.

Dim mm	Thickness mm
40x40	2,0

Ordering example

SSFA

Product



10

11

12

13

14

SSH

Corner piece

Surface finish: Electro zinc plated.

Dim mm	Thickness mm
40x40	2,0

Ordering example

SSH

Product



15

16

17

18

Frame support system

SSB

Angle 45° internal and external

Surface finish: Electro zinc plated.

Dim mm	Dim mm	Thickness mm
40x40	35x35	2,0

Ordering example

	SSB	45
Product		
Angle		



SSB

Angle 90°

Surface finish: Electro zinc plated.

Dim mm	Thickness mm
40x40	2,0

Ordering example

	SSB	90
Product		
Angle		



SSVA

Wall attachment

Surface finish: Electro zinc plated.

Dim mm	Thickness mm
40x40	2,0

Ordering example

	SSVA
Product	



SSKV

Corner X

Surface finish: Electro zinc plated.

Dim mm	Thickness mm
40x40	2,0

Ordering example

	SSKV
Product	



- 1
- 2
- 3
- 4
- 5
- 6
- 7
- 8
- 9
- 10
- 11
- 12
- 13
- 14
- 15
- 16
- 17
- 18

Frame support system

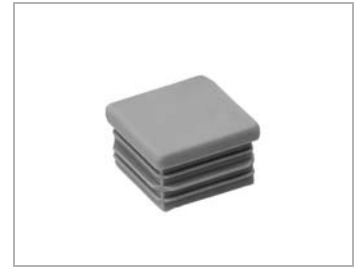
1

SBEI

Pipe cover, inside

Material: Plastic.

for square tubes
for square parts



2

3

4

Ordering example

	SBEI	40	2
Product			
Dimension			
Thickness			

5

6

SBEU

Pipe cover, outside

Material: Plastic.

for square tubes
for square parts



7

8

9

Ordering example

	SBEU	40	2
Product			
Dimension			
Thickness			

10

11

12

GMATTA, GKUDDE

Anti-vibration mat

Plain rubber mat, 10 or 25 mm thickness with 60 shore, or ribbed mat, designed for vibration damping, 8 mm thickness with 50 shore.

Code			
GMATTA	100	8	5 kg/cm ²
GKUDDE	100	10	10 kg/cm ²
GKUDDE	100	25	10 kg/cm ²



13

14

15

Ordering example

	GKUDDE
Product	

16

17

18