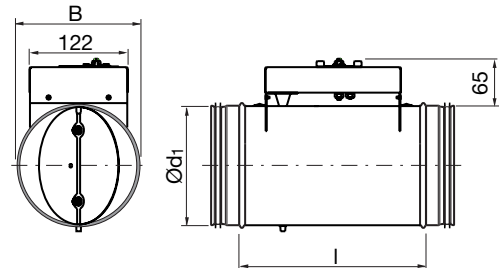


Constant flow damper

DAU



Dimensions



Description

Constant flow damper with manual setting of one flow

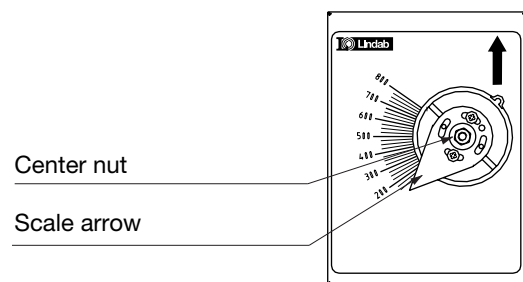
DAU is a constant flow damper, which facilitates balancing of ventilation systems and gives correct flow from the start. The unit compensates e.g. connection and disconnection of system parts, clogging of filters and ducts, thermal lift forces, wind effects, window opening etc. Ø 80–315 fullfills pressure class A in closed position. Fulfils tightness class C.

There is a separate assembly, measuring, balancing and maintenance instruction for this product.

Technical data

Flow setting

The flow is set by loosening the center nut and via the knob turning the scale arrow so it points at the wanted flow on the scale. Then the center nut is tightened.

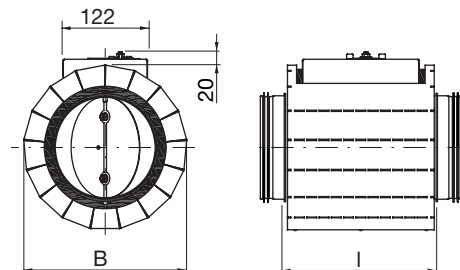


Ordering example



Ød ₁ nom	l mm	B mm	m kg	Tightness class across closed blade
80	246	122	1,35	0
100	246	122	1,40	0
125	246	135	1,65	0
160	246	170	1,85	0
200	246	210	2,26	0
250	284	260	3,35	0
315	334	325	4,75	0

DAU is available with an 45 mm external insulation and an outer sheet metal shell for lower sound radiation to the surroundings. Is then called DALU.



Ød ₁ nom	l mm	B mm	m kg	Tightness class across closed blade
80	246	170	2,35	0
100	246	190	2,50	0
125	246	215	2,90	0
160	246	250	3,45	0
200	246	290	4,06	0
250	284	340	6,05	0
315	334	405	8,60	0

