

# T-piece – Casting-in programme

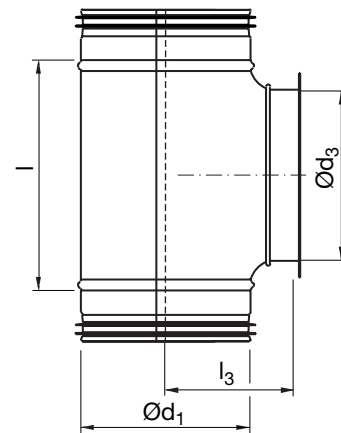
# TCPU



## Description

Short branch with female end and nail flange with pre-punched holes.

## Dimensions



Ød <sub>1</sub> nom	Ød <sub>3</sub> nom	l [mm]	l <sub>3</sub> [mm]	m [kg]
80 *	80	140	80	0,38
100	100	130	93	0,30
125	100	130	106	0,50
125	125	165	102	0,59
160	160	209	130	0,88

\* Made with saddle PS

## Ordering example

