



# Lindab **Transfer**

Product overview

# For a better climate

Most of us spend the majority of our time indoors. Indoor climate is crucial to how we feel, how productive we are and if we stay healthy.

We at Lindab have therefore made it our most important objective to contribute to an indoor climate that improves

people's lives. We do this by developing energy-efficient ventilation solutions and durable building products. We also aim to contribute to a better climate for our planet by working in a way that is sustainable for both people and the environment.

[Lindab | For a better climate](#)

## Transfer system

Transfer is a circular duct system with tension clips for quick assembly and disassembly. The system is supplied as standard with clips in dimensions  $\varnothing 80$  mm to  $\varnothing 500$  mm, and with flanges, type FL, in dimensions  $\varnothing 560$  mm to  $\varnothing 900$  mm. Dimensions below  $\varnothing 500$  mm can be delivered with flanges upon request. The duct system is suitable for particle transportation from woodworking, comfort ventilation, extraction systems for better working environment, plasma cutters, and specially designed ventilation plants where there is an extra demand for form, cleaning, colour and appearance.



## lindQST – Lindab Quick Selection Tool

[lindQST](#) is an advanced web tool that makes the selection of our solutions quick and simple.

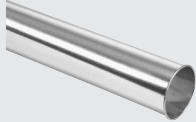
With lindQST all documentation is made available directly on the web. That means consultants, installers and architects always have access to the latest documentation, installation instructions and product images etc. lindQST is a unique online tool where you can simulate your room in the Indoor Climate Designer, keep track of your projects and share it with your business partners etc. lindQST provides a simple shortcut to Lindab's material and is a tool that speeds up and simplifies the daily work. All information is just a mouse-click away.



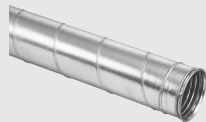
# Product overview

## Transfer

### Circular ducts



LRTR



SRTR

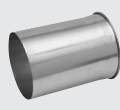
### Slide-on stub telescopic duct



ILRTR



PTR



TLTR1



TLTR2



TSRTR

### Bends



BSFTR



BSTR



BTR

### Reducer, T-piece, X-piece, Y-piece



RCLTR



TVTR30



XVTR30



YVTR30

### Saddle and collar saddle



PSTR



PSVTR30

Click on the product for link to detailed technical information, or visit [www.lindab.com](http://www.lindab.com)

## Transfer

### Take-off and end cover

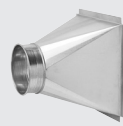


EPTR



ILTR

### Transition pieces



LORTR



MFTR



OTR



OUTR

### Clips and sealing clamp



MFK



SB



SB1



SB2

### Extraction hoods and waste extractor



GSTR

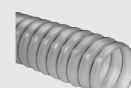


SH

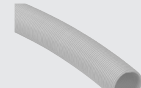
### Flexible hoses and transition pieces



OTRTH

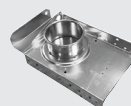


THTR

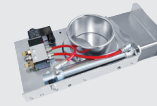


THVTR

### Sliding dampers



SKMTR



SKMTR



# Transfer

## – a duct system that is quick and easy to assemble and take apart

Transfer is a circular duct system with tension clips for quick assembly and disassembly. The system passes tightness class C and is supplied as standard with clips in dimensions Ø80 to Ø500 and with FL flanges in dimensions Ø560 to Ø900.

### Advantages of the Transfer system

- Facilitates inspection and cleaning thanks to quick and simple disassembly.
- Facilitates environmental checking of the duct system.
- Rational joining, without screws or blind rivets.
- Has well-protected seal mouldings inside the clips.
- Can be twisted and adjusted after installation.
- Gives straight assembly.
- Does not have any sharp edges in the joints, since the bead is swaged directly on the fittings.
- Is highly suitable for transporting light material by means of air (chip extraction).
- Thanks to the bead, components are round and stiff.
- Does not require couplings.
- Transition pieces available for the Safe systems etc.
- Has lower pressure drop than the Safe system.

### Applications

The duct system is suitable for:

- Particle transportation from woodworking, such as saw mills, carpenters, furniture manufacturers and craft workshops.
- Comfort ventilation.
- Extraction systems for better working environment.
- Plasma cutters.
- Specially designed ventilation plants where you have extra demands for form, colour and appearance.

Please contact your local sale support if you need other applications or to transport other materials, and if there are special operation circumstances.

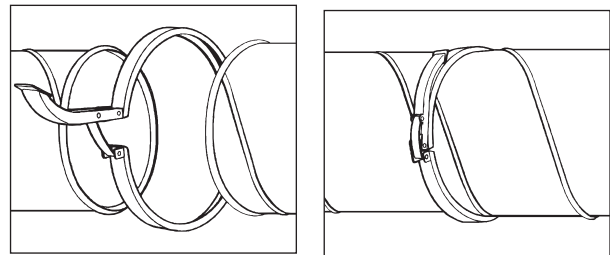
### Mountings

The types of mountings and their distances shall be chosen so that no sagging occurs in the system, and as justified for safe installation.

### Maintenance

The duct system does normally not need any maintenance, but regular checks for wear should be made.

- Quick and easy to assemble and disassemble.



### Dust explosions

There is always a risk of dust explosion in installations where finely-divided material is transported.

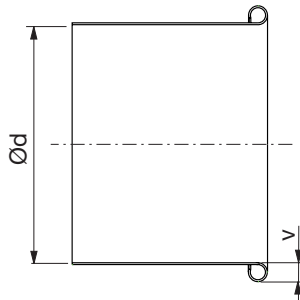
A dust explosion occurs when a critical mixture of finely divided material and air is ignited and burns rapidly with consequent rapid expansion and pressure rise. A common cause of ignition is a spark from electrostatic discharge. Dust and sawdust extraction installations must be designed to minimise sources of fire and explosion.

### Noise

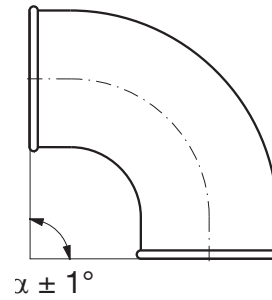
In particle transport systems, where the pressure differs between in- and outside is big and where a little leakage may cause noise, the joints ought to be taped if low noise levels are required.

# Transfer

## Dimensions of ducts and fittings



## Angle tolerance



Ød nom	Ød mm	v mm
80	78	6
100	98	6
125	123	6
140	138	6
150	148	6
160	158	6
180	178	8
200	198	8
224	224	8
250	250	8
300	300	10
315	315	10
350	350	10
400	400	10
450	450	10
500	500	10
560–900 with flanges		



**Click [here](http://www.lindab.com) or visit [www.lindab.com](http://www.lindab.com) to view mounting instructions for Lindab transfer system.**



Most of us spend the majority of our time indoors. Indoor climate is crucial to how we feel, how productive we are and if we stay healthy.

We at Lindab have therefore made it our most important objective to contribute to an indoor climate that improves people's lives. We do this by developing energy-efficient ventilation solutions and durable building products. We also aim to contribute to a better climate for our planet by working in a way that is sustainable for both people and the environment.

[Lindab | For a better climate](#)