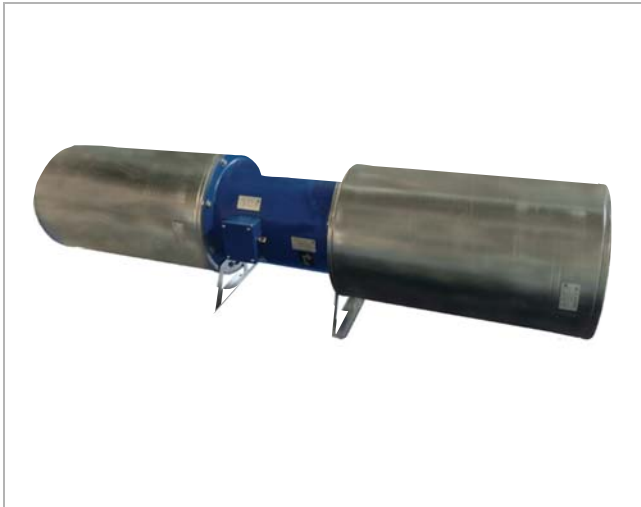
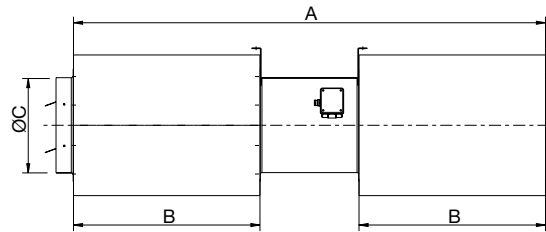


Circular Jet Fan

JFC FIRE



Dimensions



Description

Axial fan with reinforced tubular casing, made of steel sheet with connection box accessible by the side from a removable door.

Standard asynchronous squirrel-cage motor with IP-55 protection and Class H insulation, Certified 400°C/2h. Standard voltages 230/400V 50Hz (or 265/460V 60Hz) for 1 speed motors and 400V 50Hz (or 460V 60Hz) for 2 speed motors.

Casing in galvanized steel. Inner duct made of perforated galvanized steel sheet.

The silencers are filled with mineral wool with high acoustic absorption properties, preventing most of the fan noise to be propagated.

Unidirectional JFC UN is equipped with a protection guard at the inlet side and a deflector at the outlet.

Reversible JFC RE is equipped with deflectors on both sides. The deflector directs the air away from the ceiling and obstacles like beams or ducting, sweeping the whole volume of air to the closest extraction point.

Conceived for car parkings and large spaces where polluted air, or smoke from an accidental fire, needs to be removed effectively.

Official homologation by the European laboratory APPLUS according to EN 12101-3:2002, EN 12101-3:2002/AC:2005

Product	Ød mm	A mm	B mm	C mm	m kg
JFC FIRE 315 T2 UN	315	1640	630	455	91
JFC 315 T2 RE	315	1640	630	455	95
JFC 315/H T2 RE	315	1640	630	455	97
JFC 355 T2 UN	355	1800	710	495	99
JFC 355/H T2 UN	355	1800	710	495	101
JFC 355 T2 RE	355	1800	710	495	101
JFC 355/H T2 RE	355	1800	710	495	103
JFC 315/H T2 UN	400	1640	630	455	93
JFC 400 T2 UN	400	2025	800	540	121
JFC 400 T2 RE	400	2025	800	540	125
JFC 400/H T2 UN	400	2025	800	540	128
JFC 400/H T2 RE	400	2025	800	540	128

T= 400 volt
M = 230 volt

Ordering example

	JFC FIRE	315	T	2	H	UN
Product						
Size						
Voltage						
Polarity						
Performance						
Handing						



Circular Jet Fan

JFC FIRE

Technical data

Graph Ref.	Product	Airflow	Thrust	Motor	Amps	Speed
		m ³ /s	N	W	FLC	RPM
1	JFC FIRE 315 T2 UN	1,08	19	550	1,41	2810
2	JFC FIRE 315/H T2 UN	1,37	30	1100	4,13	2845
3	JFC FIRE 315 T2 RE	1,03	17	550	1,41	2810
4	JFC FIRE 315/H T2 RE	1,3	27	1100	4,13	2845
5	JFC FIRE 355 T2 UN	1,33	22	550	1,41	2810
6	JFC FIRE 355/H T2 UN	1,75	38	1100	4,13	2845
7	JFC FIRE 355 T2 RE	1,26	20	550	1,41	2810
8	JFC FIRE 355/H T2 RE	1,66	35	1100	4,13	2845
9	JFC FIRE 400 T2 UN	2	39	1100	4,13	2845
10	JFC FIRE 400/H T2 UN	2,63	67	1500	5,83	2825
11	JFC FIRE 400 T2 RE	1,9	35	1100	4,13	2845
12	JFC FIRE 400/H T2 RE	2,5	61	1500	5,83	2825

Graph Ref.	Product	Sound Power Level (Breakout)								dB(A) @ 3m
		63	125	250	500	1K	2K	4K	8K	
1	JFC FIRE 315 T2 UN	77	77	75	75	74	74	75	71	63
2	JFC FIRE 315/H T2 UN	79	78	77	76	76	75	75	71	65
3	JFC FIRE 315 T2 RE	N/A	N/A	N/A	N/A	N/A	N/A	N/A	N/A	N/A
4	JFC FIRE 315/H T2 RE	N/A	N/A	N/A	N/A	N/A	N/A	N/A	N/A	N/A
5	JFC FIRE 355 T2 UN	80	81	79	79	78	77	79	76	67
6	JFC FIRE 355/H T2 UN	79	79	78	77	76	75	76	73	66
7	JFC FIRE 355 T2 RE	N/A	N/A	N/A	N/A	N/A	N/A	N/A	N/A	N/A
8	JFC FIRE 355/H T2 RE	N/A	N/A	N/A	N/A	N/A	N/A	N/A	N/A	N/A
9	JFC FIRE 400 T2 UN	N/A	N/A	N/A	N/A	N/A	N/A	N/A	N/A	N/A
10	JFC FIRE 400/H T2 UN	85	82	82	80	80	80	80	76	70
11	JFC FIRE 400 T2 RE	N/A	N/A	N/A	N/A	N/A	N/A	N/A	N/A	N/A
12	JFC FIRE 400/H T2 RE	N/A	N/A	N/A	N/A	N/A	N/A	N/A	N/A	N/A