

Centrifugal with Heat recovery

CSF



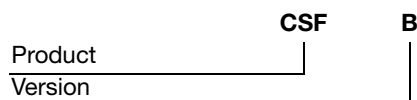
Description

Domestic fan with Energy Recovery up to 70%; Ideal for domestic applications and suitable for single room; Wall and/or panel mounting; Heat exchanger in PVC welded plates; Twin centrifugal fan; Polyurethane filters for higher protection and long life; Pre-heating system (PH model) consists of a 350W coil with thermostat fitted in the inlet duct made of self extinguishing material; standard version with options of Timer and Pre-heated for cold climates model. This unit carries an IPX4 rating.

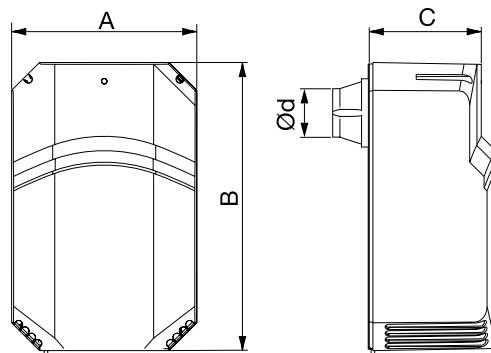
Alternate Versions:

- CSF-B As above
- CSF-T Automatic run on timer with setting of 2-25 minutes
- CSF-PH Available with a pre heater for cooler climates

Ordering example

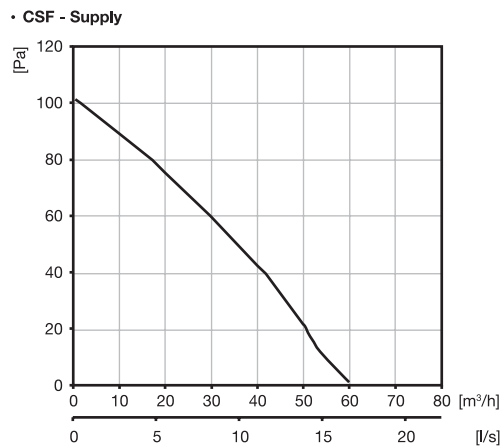
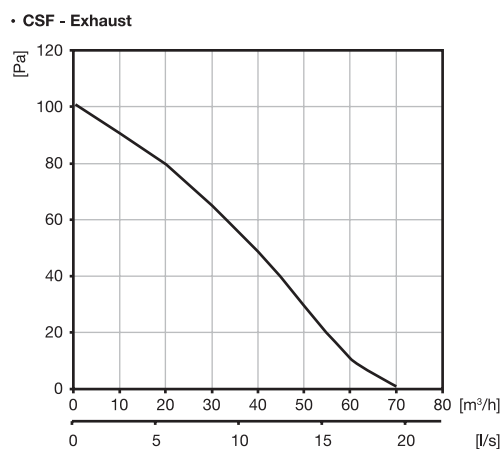


Dimensions



Product	A mm	B mm	C mm	Ød mm	m kg
CSF	257	400	155	95	3,30

Technical data



- 1
- 2
- 3
- 4
- 5
- 6
- 7
- 8
- 9
- 10
- 11
- 12
- 13
- 14
- 15
- 16
- 17
- 18

Centrifugal with Heat recovery

CSF

Technical data

Product	Frequency Hz	Voltage V	Electric Power Input W	Current A	r.p.m	Maximum air capacity		Sound pressure level at 3 m dB(A)	Max. operating temperature °C	SEC class	IP
						supply m³/h	exhaust m³/h				
CSF-B	50	220-240	40	0,3	2400	60	70	34	-5/+35	*	X4
CSF-T	50	220-240	40	0,3	2400	60	70	34	-5/+35	*	X4
CSF-PH	50	220-240	280	0,3	2400	60	70	34	-25/+35	*	X4

(*): Regulation 1254/2014 does not apply if electric power input per airflow < 30 W

1

2

3

4

5

6

7

8

9

10

11

12

13

14

15

16

17

18